



SIDC Stakeholder Report

December 2021



List of contents

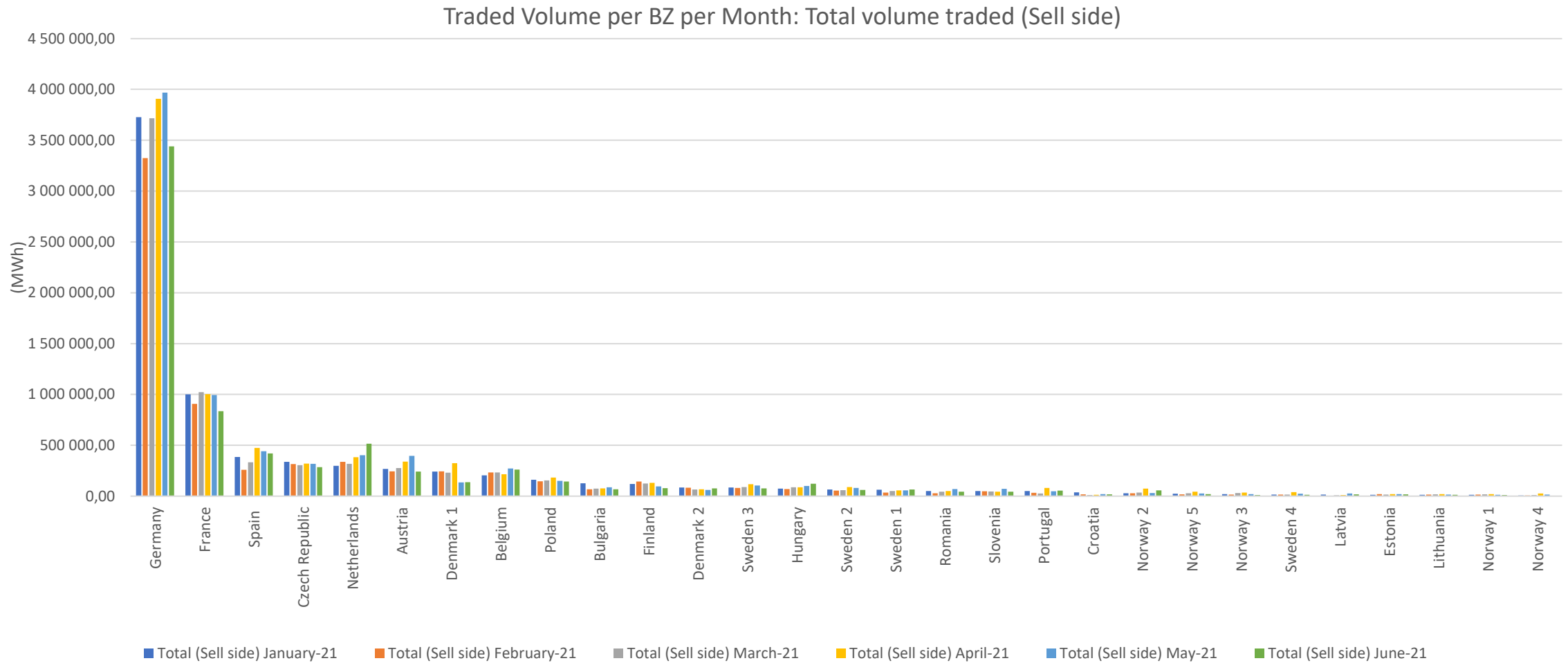
H1 2021 data	1	Traded volume per BZ per month	Slides 4-11
	2	Weighted average prices per MTU per BZ	Slides 12-13
	3	Overall volume traded across the coupled region	Slide 14
	4	Total volume matched hours before delivery	Slide 15
	5	Volume fractions of products per BZ per month (%)	Slides 16-19
	6	Share of cross-bidding zone trades vs. overall BZ volume	Slides 20-21
	7	Total availability of the central SIDC platform	Slide 22
12/2021 data	8	Net positions	Slides 23-33
	9	Total amount of explicit capacity allocation	Slides 34-37
	10	Explicit allocation share on total allocation	Slides 38-39
	11	ATC utilization rate	Slide 40
	12	Evolution of order events and trades	Slide 41

Introduction

- This document contains charts on the indicators defined for SIDC stakeholder reporting.

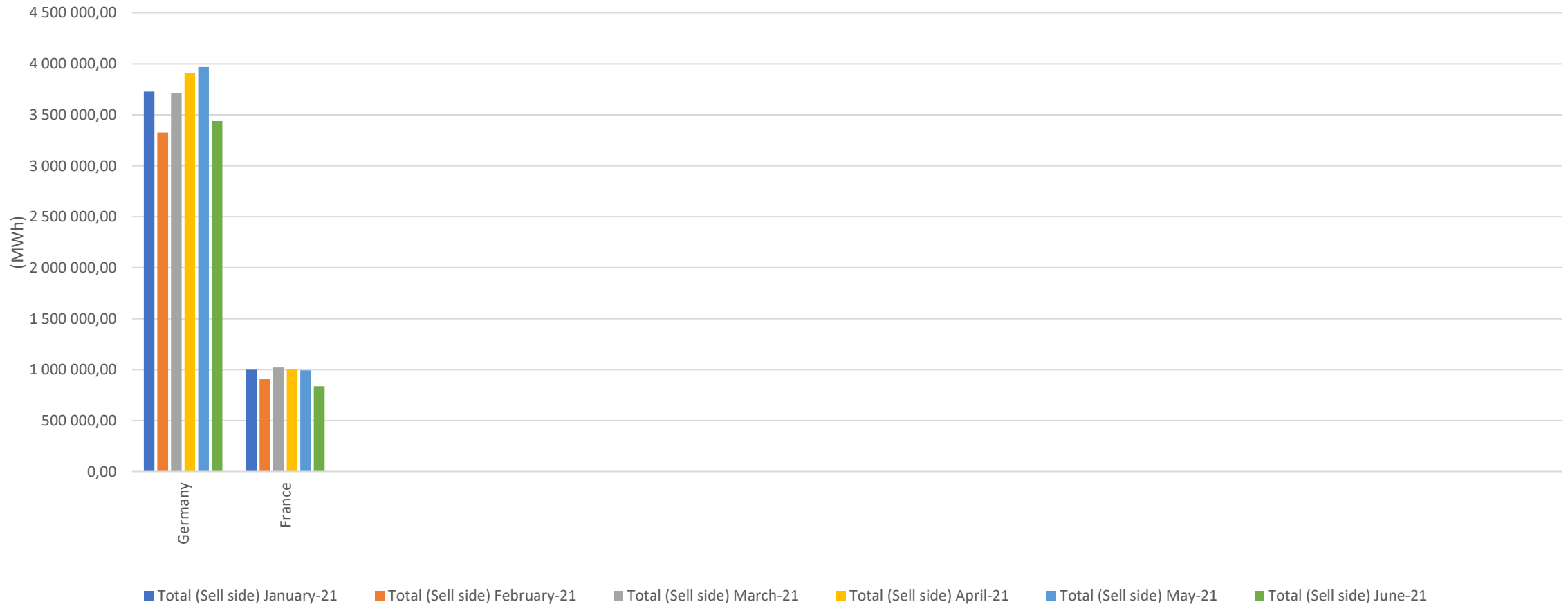
Indicator name	Indicator Description	Indicator generation period
Traded Volume per BZ per Month	Aggregated volume of all Trades within the Intraday Market Timeframe per Bidding Zone	Half-yearly (H1, H2), reported monthly
Weighted Average prices per MTU per BZ	The indicators counts the volume-weighted average price of all Trades per contract per Bidding Zone	Half-yearly (H1, H2), reported monthly
Overall volume traded across the coupled region (Overall volume traded in XBID)	Aggregated volume of all Trades within the Intraday Market Timeframe	Half-yearly (H1, H2), reported monthly
Total volume matched hours before delivery	This indicator counts the traded volumes, grouped per contract with same “delivery time start-end”, per combination of Bidding Zones and grouped according to the hours left to delivery and aggregated per month	Half-yearly (H1, H2), reported monthly
Volume fractions of products per BZ per Month (%)	This indicator counts for each Bidding Zone the traded volumes per products as a percentage of the total traded volume of the Bidding Zone.	Half-yearly (H1, H2), reported monthly
Share of cross-bidding zone trades vs. overall BZ volume	This indicator counts per Bidding Zone the traded volumes on Bidding Zone borders versus the aggregated volume of all Trades within the Intraday Market Timeframe	Half-yearly (H1, H2), reported monthly
Total availability of the central SIDC platform	This indicator represents the central SIDC platform aggregated availability in percentage.	Monthly
Net Positions	This indicator counts (calculates) the Net Positions for each Bidding Zone per MTU level.	Monthly
Total amount of Explicit Capacity Allocation	This indicator counts on a daily basis the total amount of Intraday Cross-Zonal Capacity, which do not derive from a Trade in the Shared Order Book, per direction (import/export).	Monthly
Explicit allocation share on total allocation	This indicator reports on share of Explicit allocation compared to total allocations per BZ border where explicit allocations are offered to the market.	Monthly
ATC utilization rate	ratio for each MTU calculated from the Allocated netted Intraday Capacity / offered Intraday capacity for each border in both directions	Monthly
Evolution of the order events and trades	This indicator reports on daily Order Transactions and Trades since the first complete day of trading.	Monthly

1. Traded volume per BZ per month (1/8)



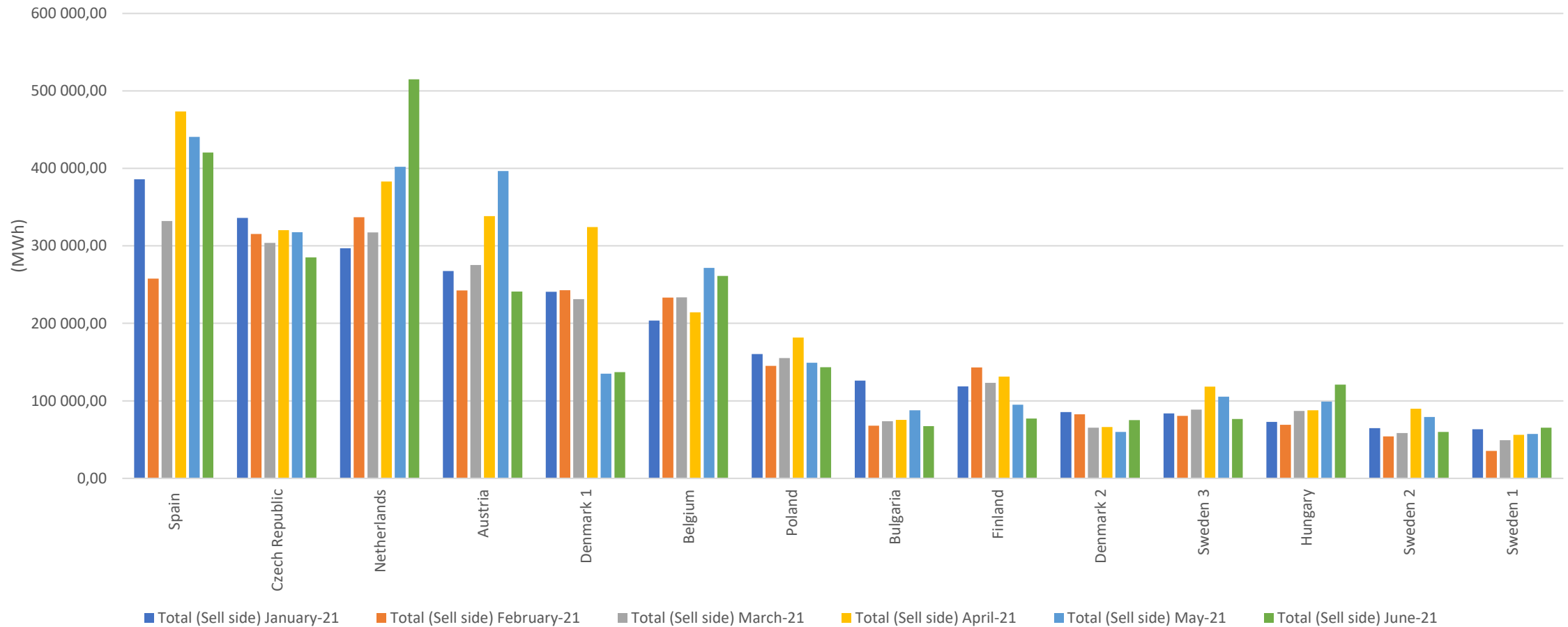
1. Traded volume per BZ per month (2/8)

Traded Volume per BZ per Month: Total volume traded (Sell side)



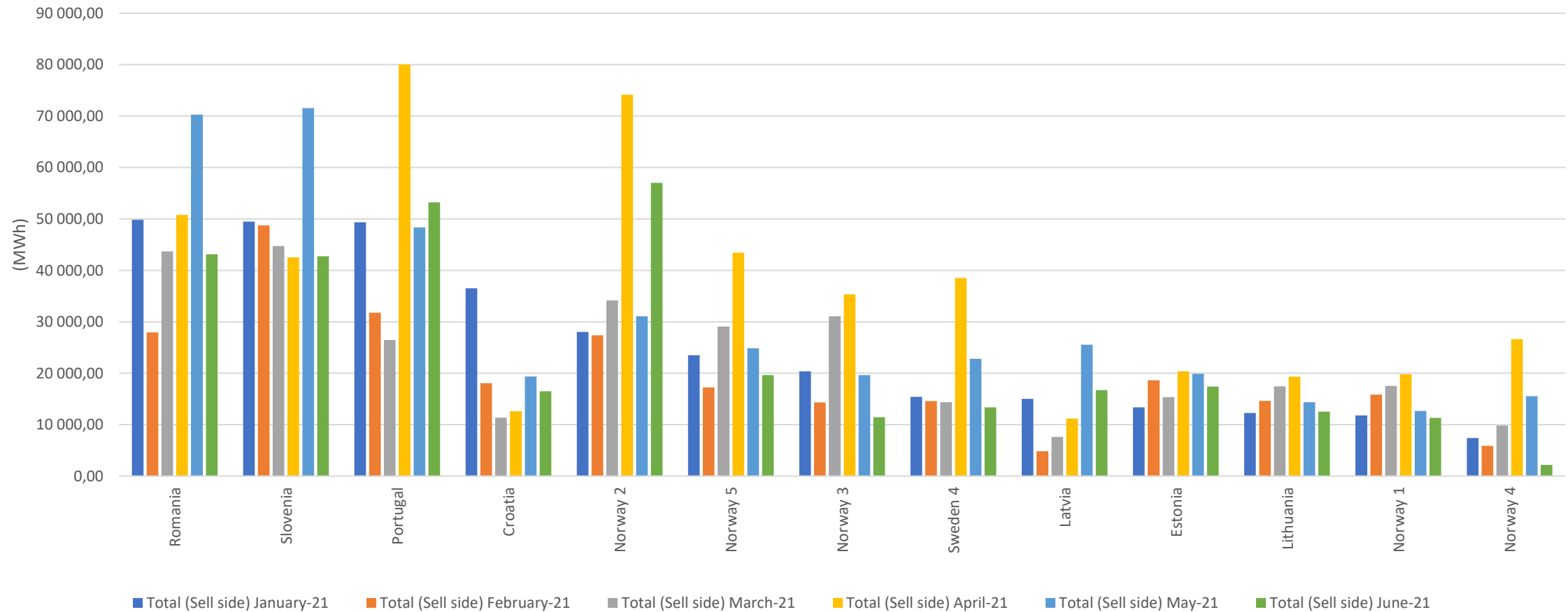
1. Traded volume per BZ per month (3/8)

Traded Volume per BZ per Month: Total volume traded (Sell side)



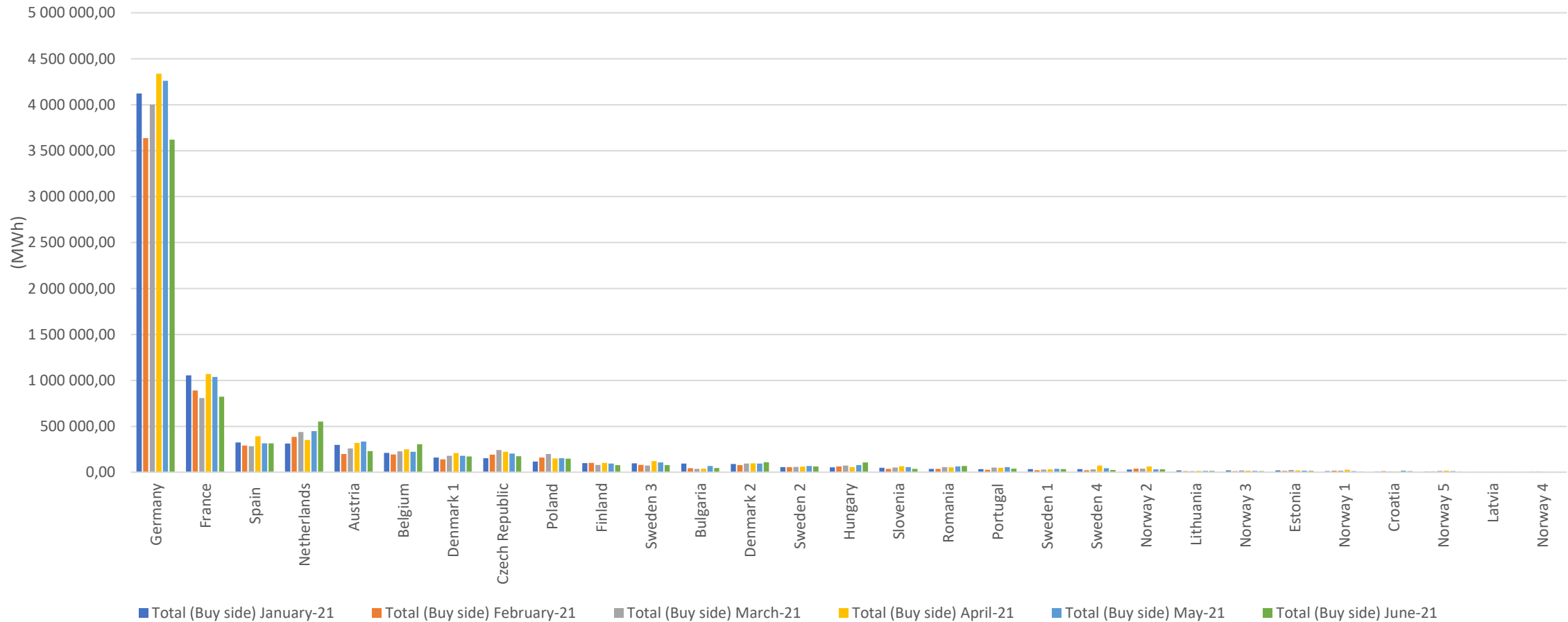
1. Traded volume per BZ per month (4/8)

Traded Volume per BZ per Month: Total volume traded (Sell side)



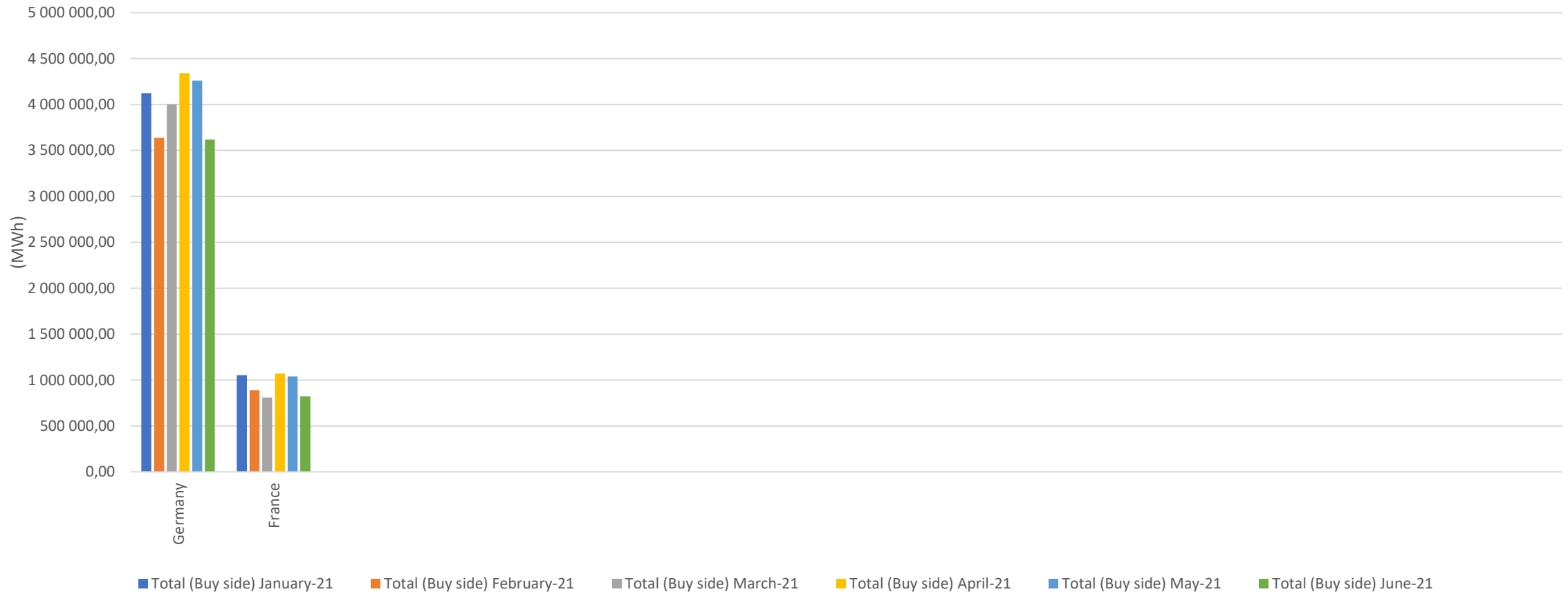
1. Traded volume per BZ per month (5/8)

Traded Volume per BZ per Month: Total volume traded (Buy side)



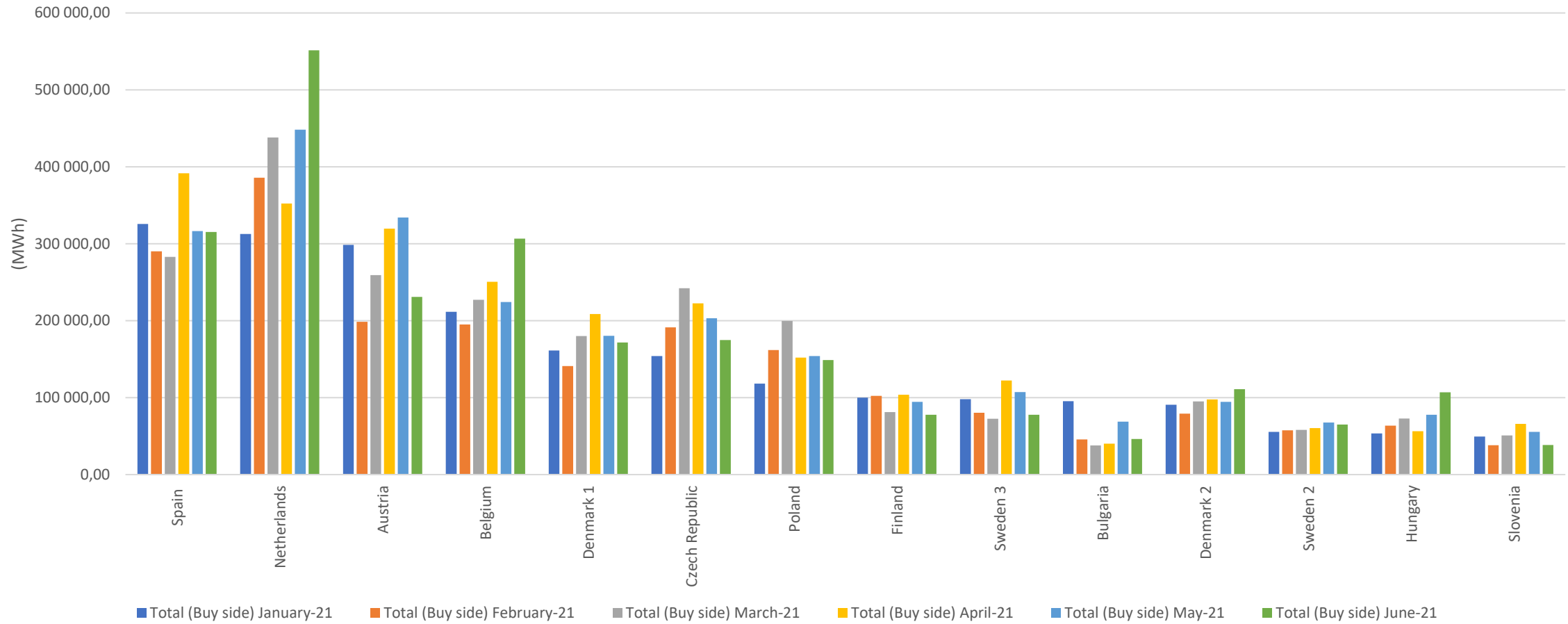
1. Traded volume per BZ per month (6/8)

Traded Volume per BZ per Month: Total volume traded (Buy side)



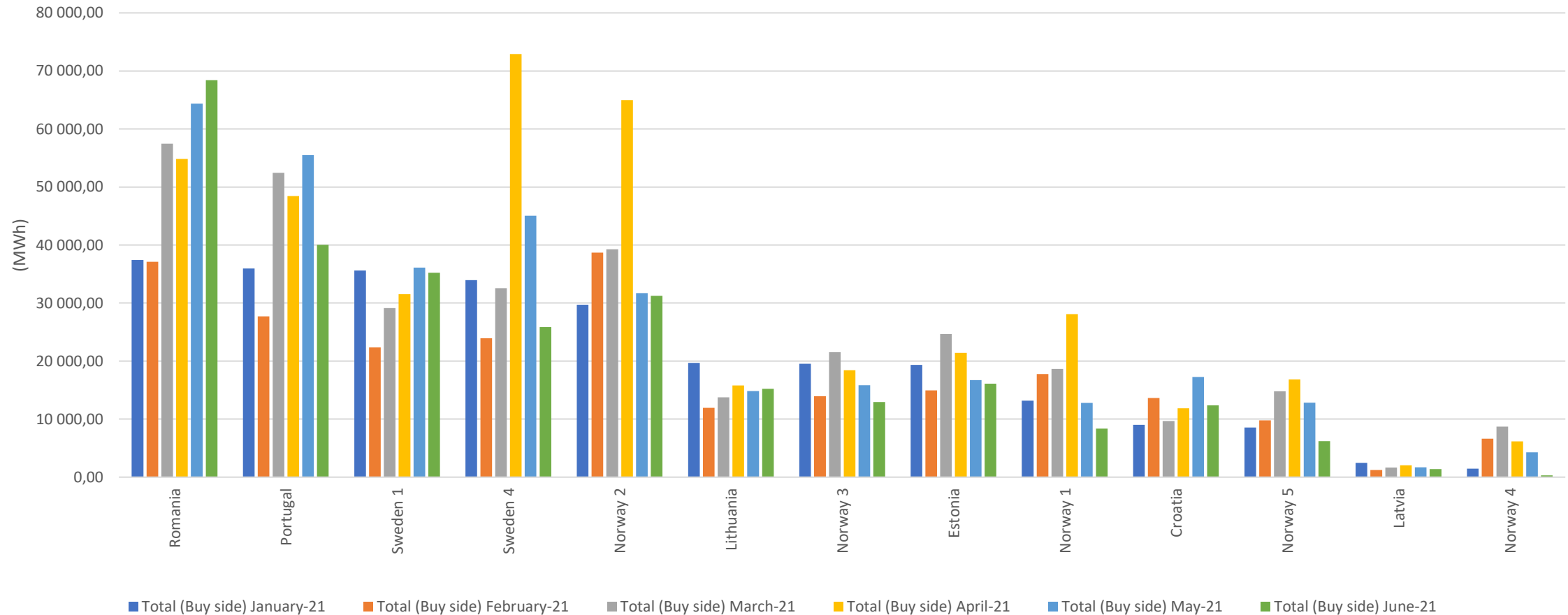
1. Traded volume per BZ per month (7/8)

Traded Volume per BZ per Month: Total volume traded (Buy side)

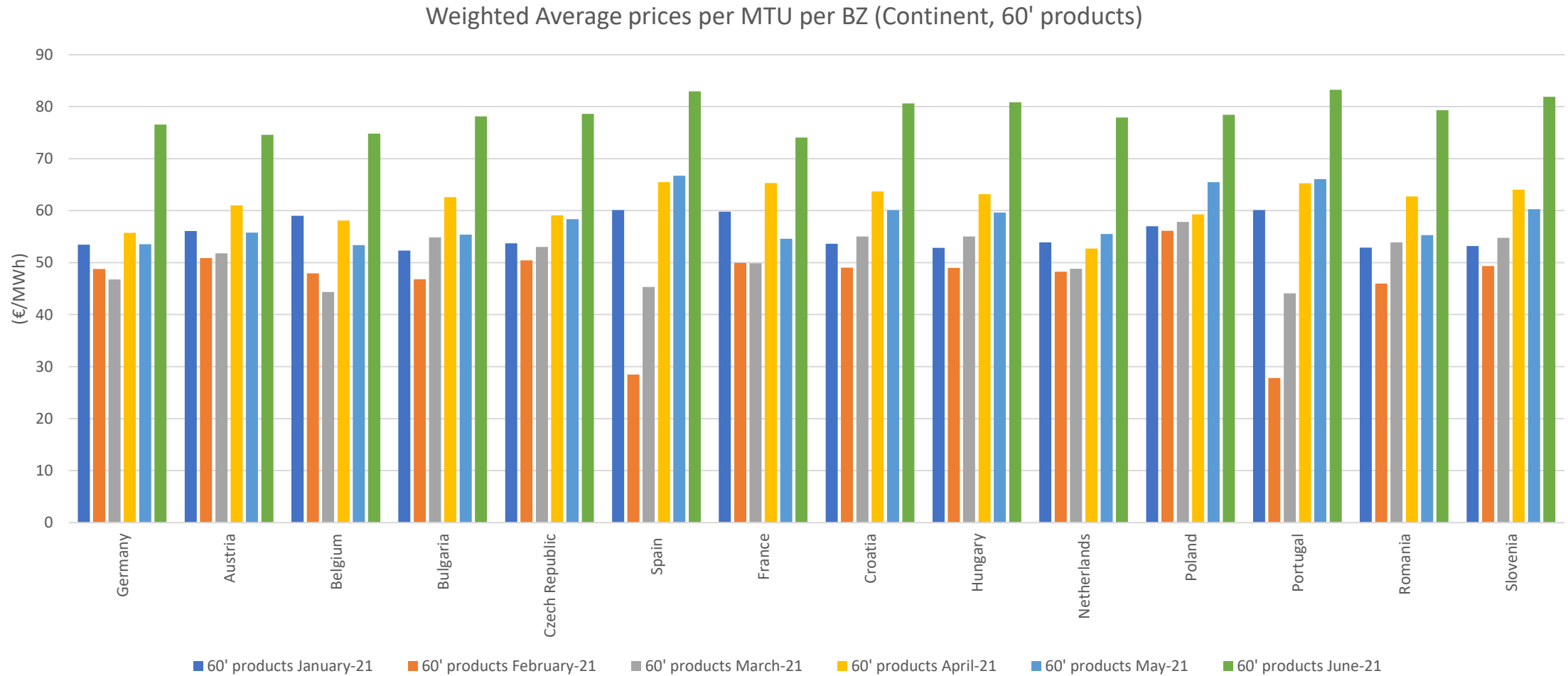


1. Traded volume per BZ per month (8/8)

Traded Volume per BZ per Month: Total volume traded (Buy side)

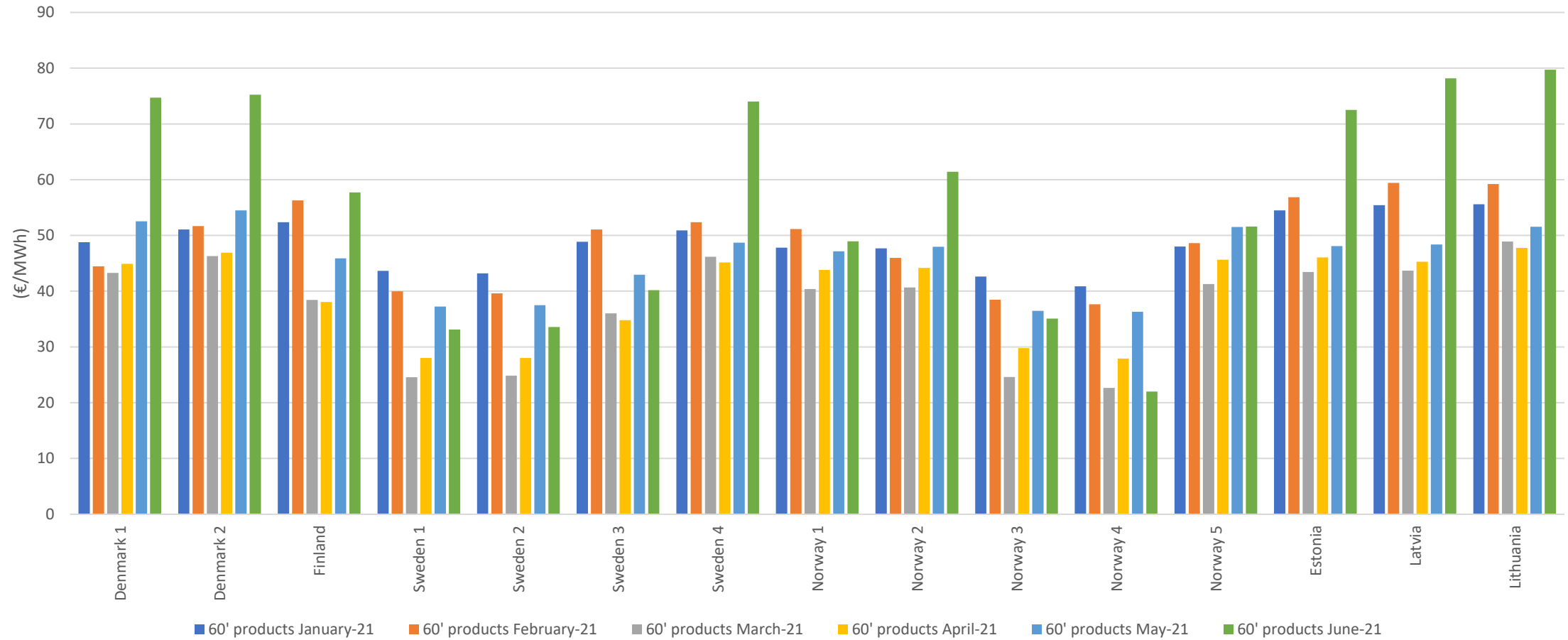


2. Weighted average prices per MTU per BZ (1/2)

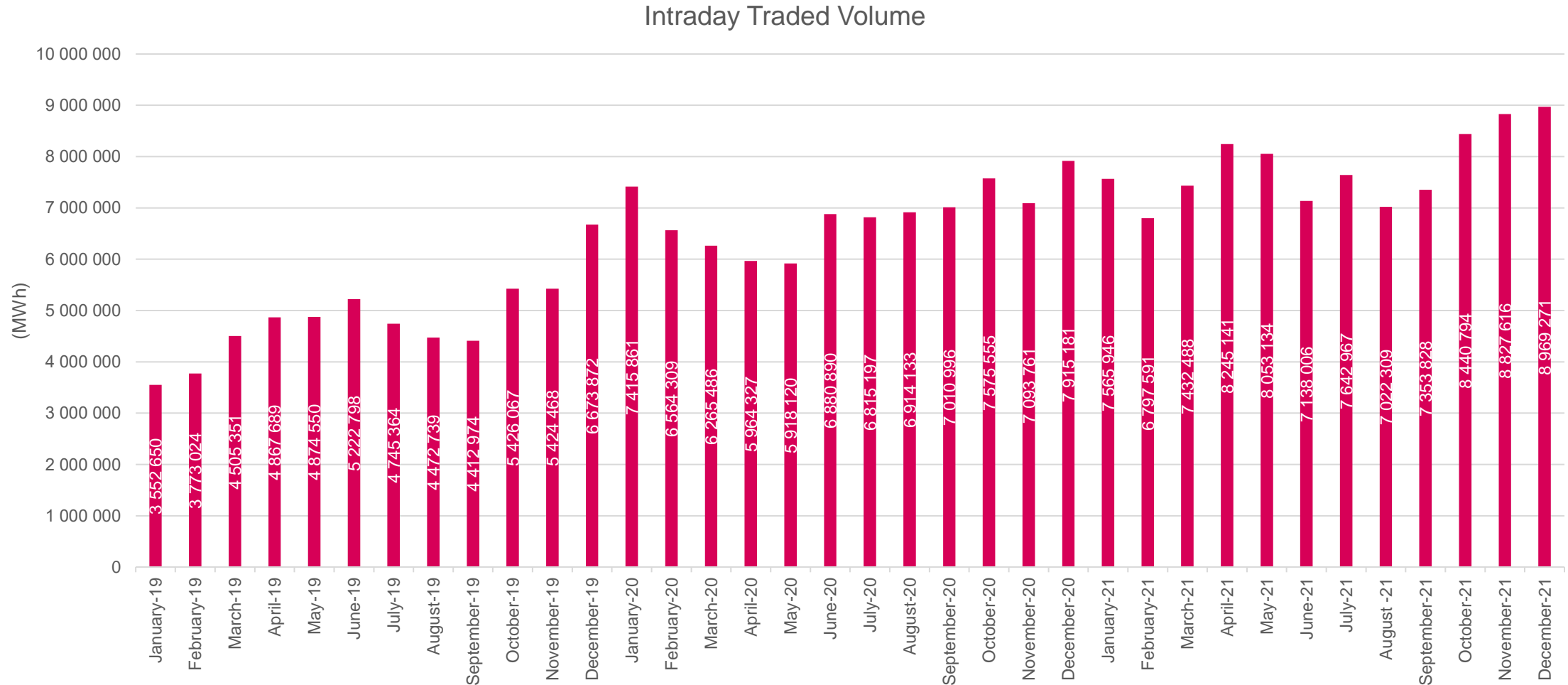


2. Weighted average prices per MTU per BZ (2/2)

Weighted Average prices per MTU per BZ (Nordic + Baltic, 60' products)

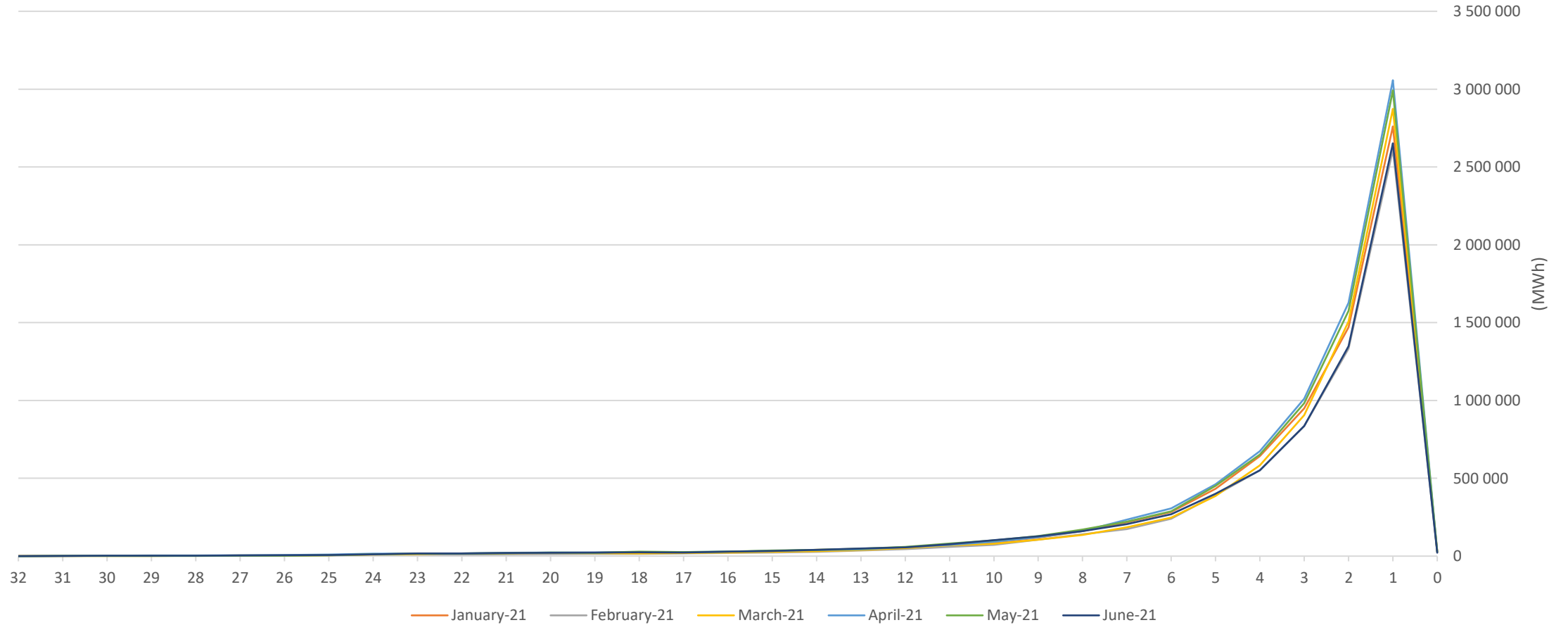


3. Overall volume traded across the coupled region



4. Total volume matched hours before delivery

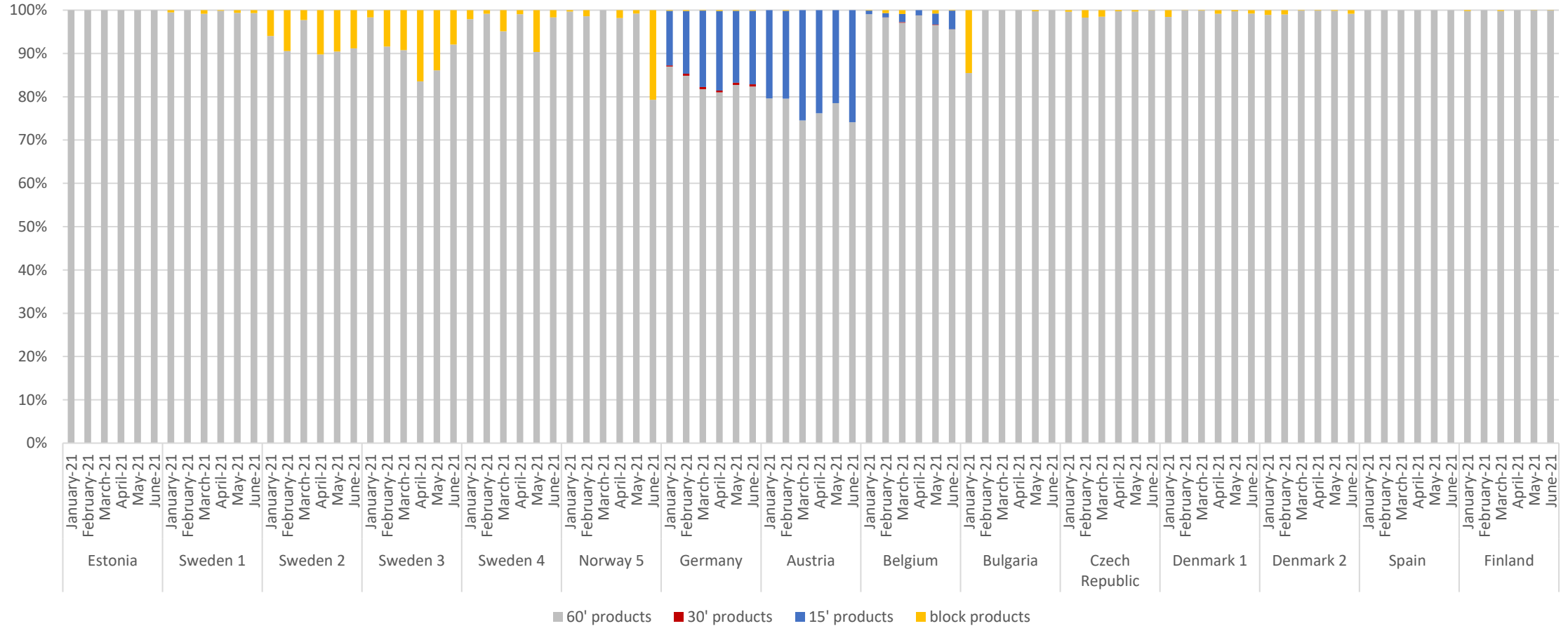
Total volume matched within hours before delivery



Please avoid misinterpretation of the line(s) between "1" and "0" being aware that the volume matched between 1 hour to 30 minutes is substantially lower (in thousands of MWhs) and there is no volume matched between 30 minutes to 0.

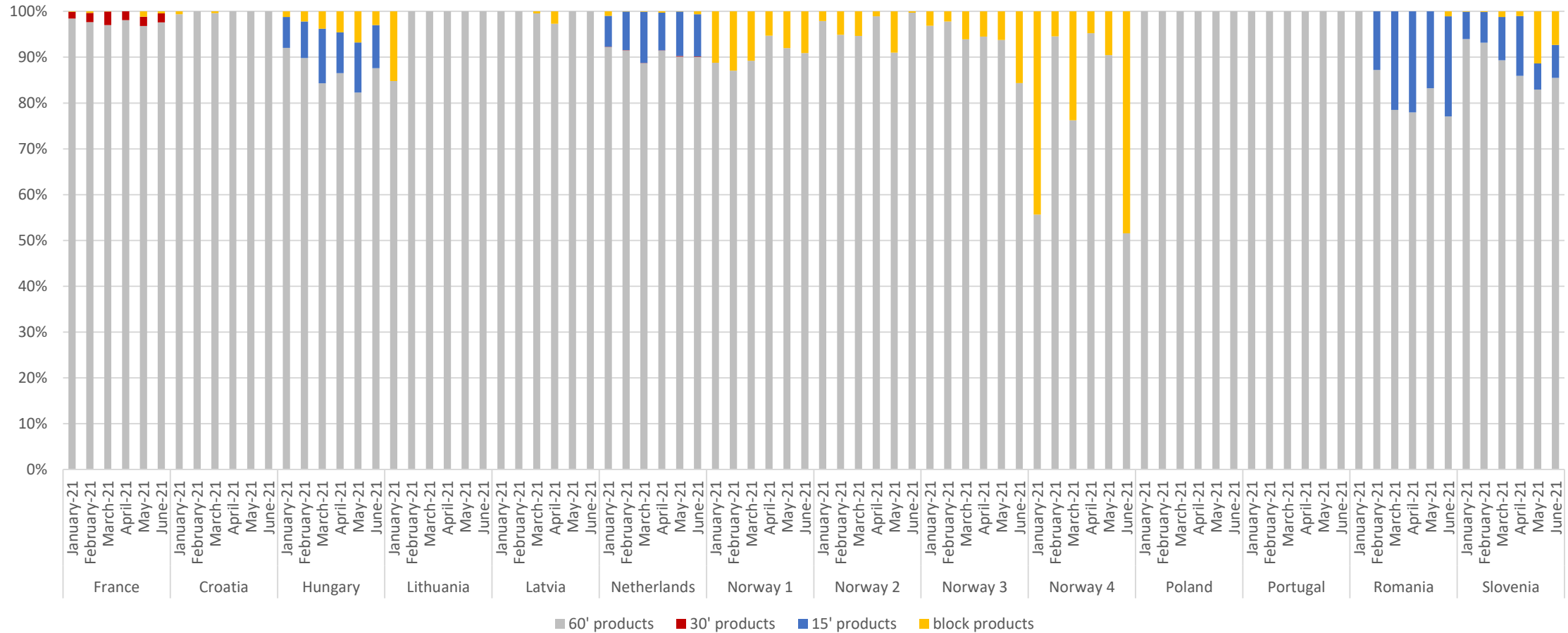
5. Volume fractions of products per BZ per month (1/4)

Volume fractions of products per BZ per Month (Sell side)



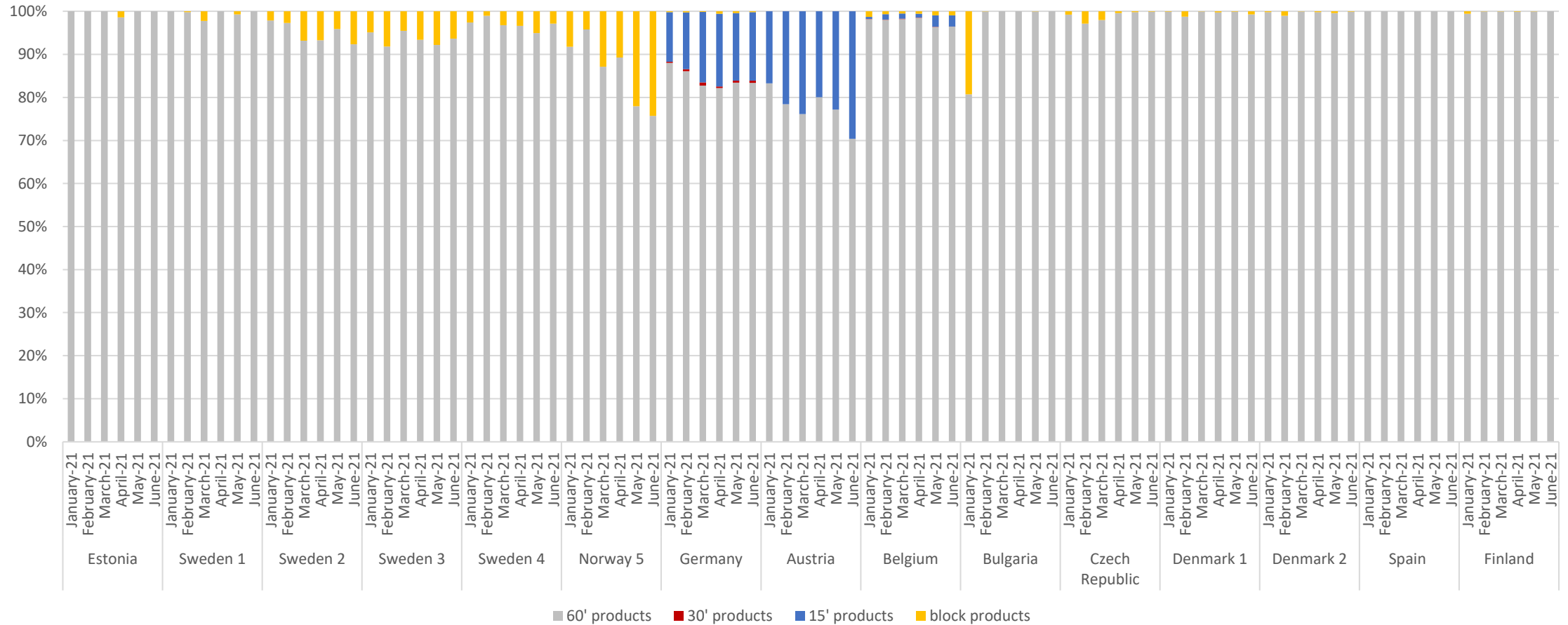
5. Volume fractions of products per BZ per month (2/4)

Volume fractions of products per BZ per Month (Sell side)



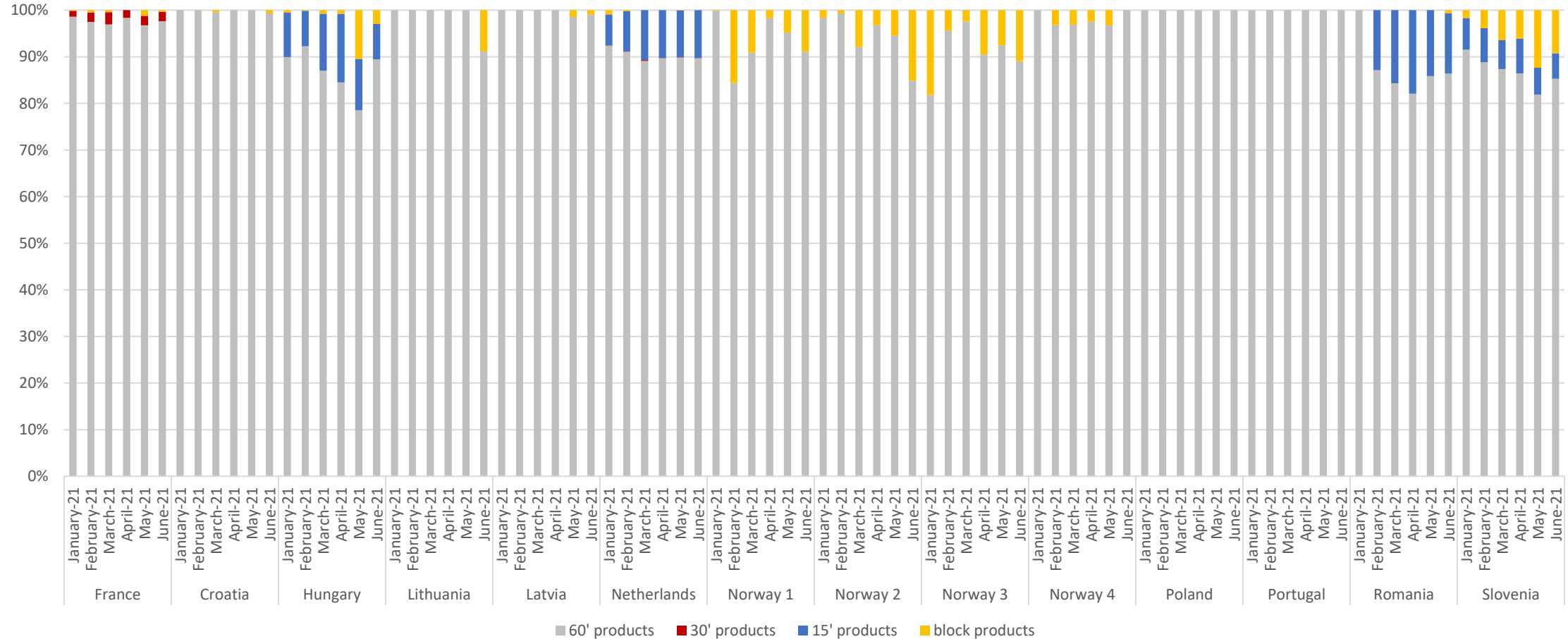
5. Volume fractions of products per BZ per month (3/4)

Volume fractions of products per BZ per Month (Buy side)



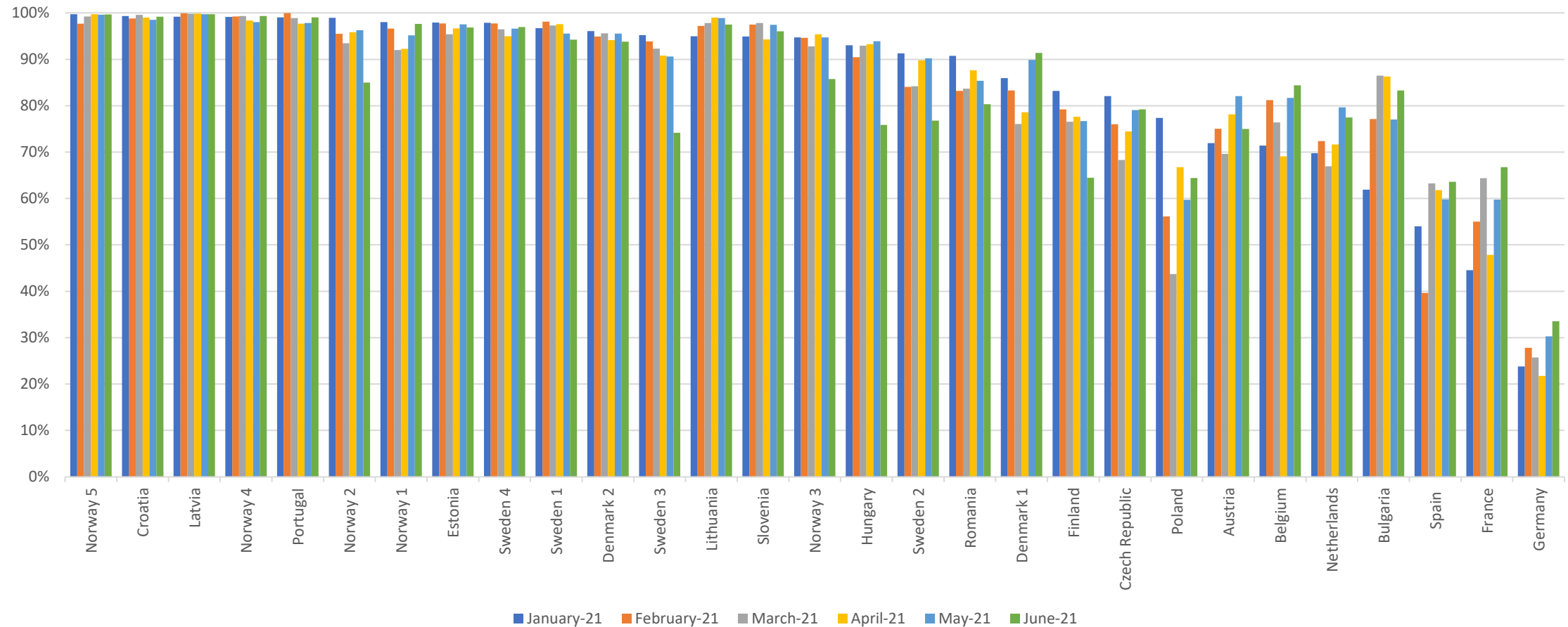
5. Volume fractions of products per BZ per month (4/4)

Volume fractions of products per BZ per Month (Buy side)



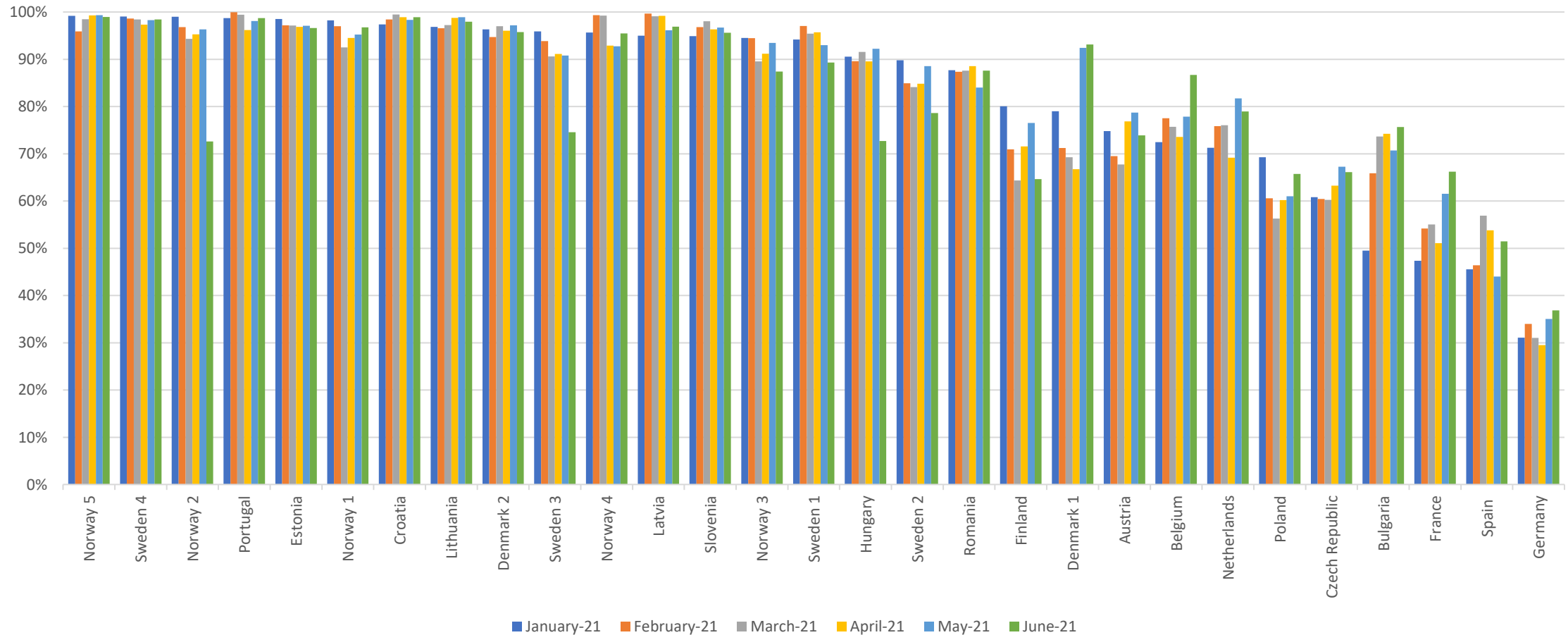
6. Share of cross-bidding zone trades vs. overall BZ volume (1/2)

Share of cross-bidding zone trades vs. overall BZ volume (Sell side)

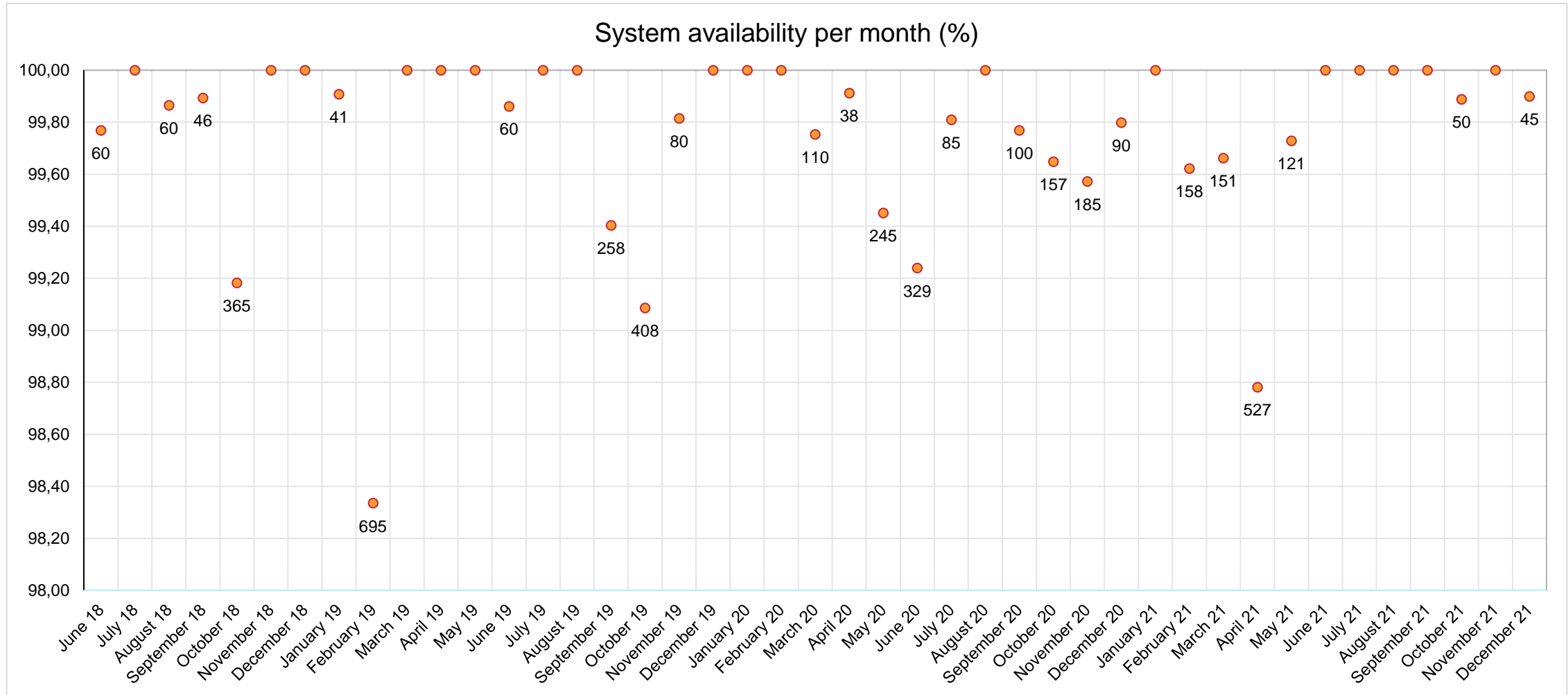


6. Share of cross-bidding zone trades vs. overall BZ volume (2/2)

Share of cross-bidding zone trades vs. overall BZ volume (Buy side)

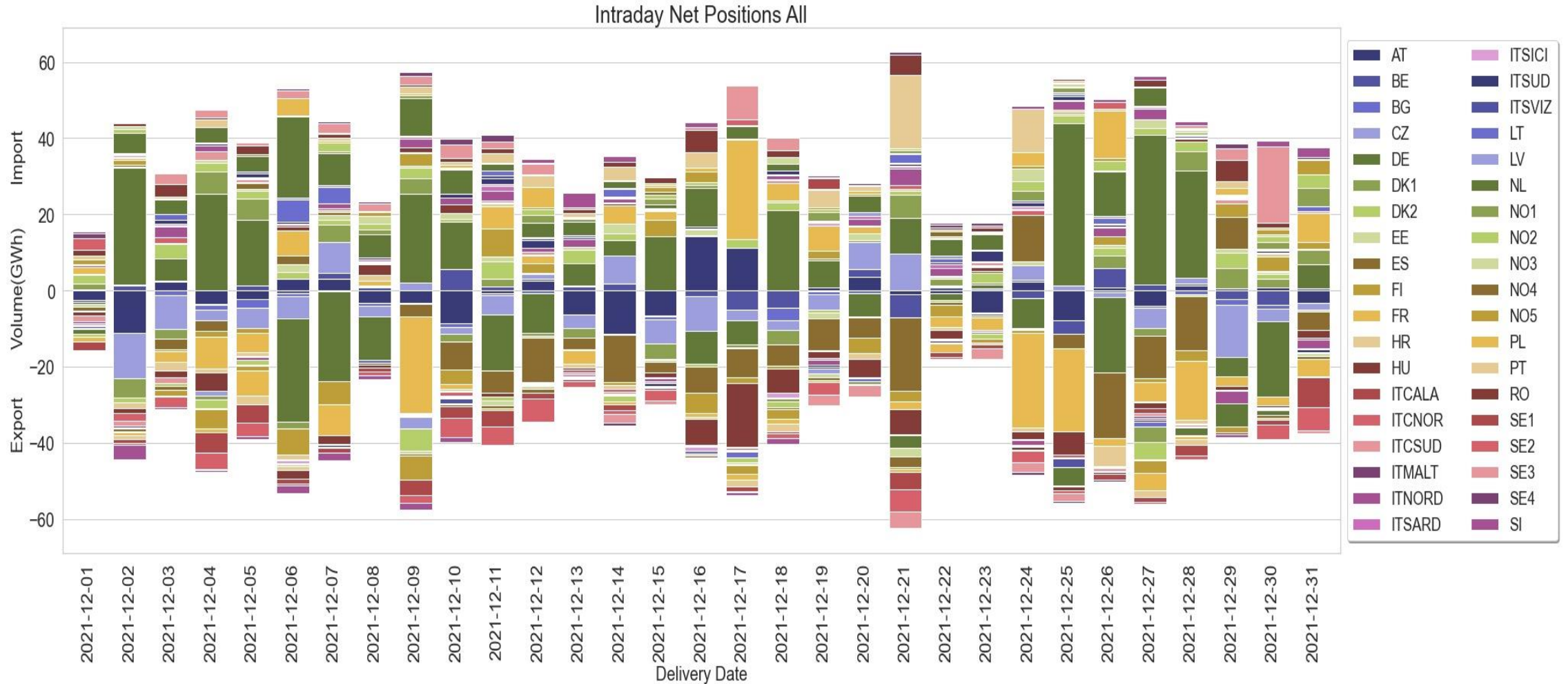


7. Total availability of the central SIDC platform

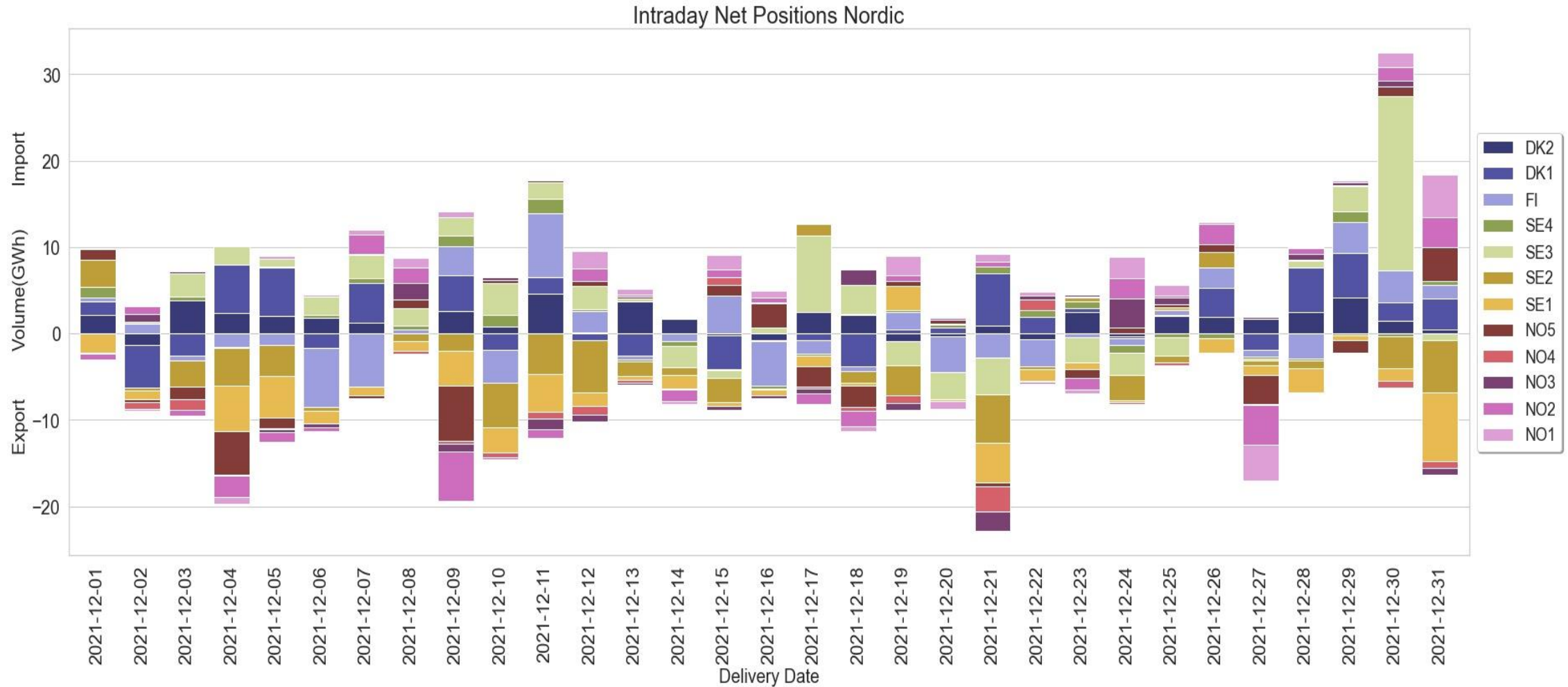


*minutes of downtime included to markers for months where applicable

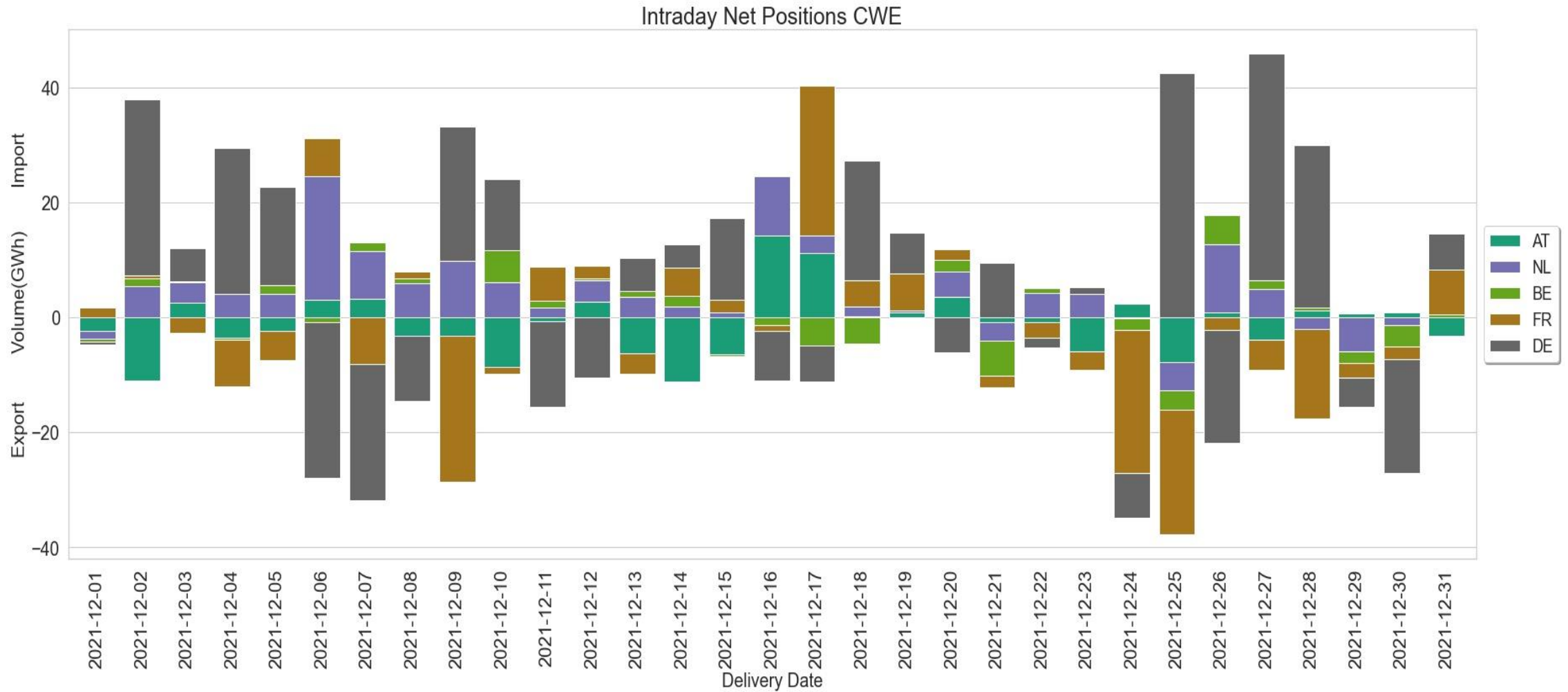
8. Net positions (1/11)



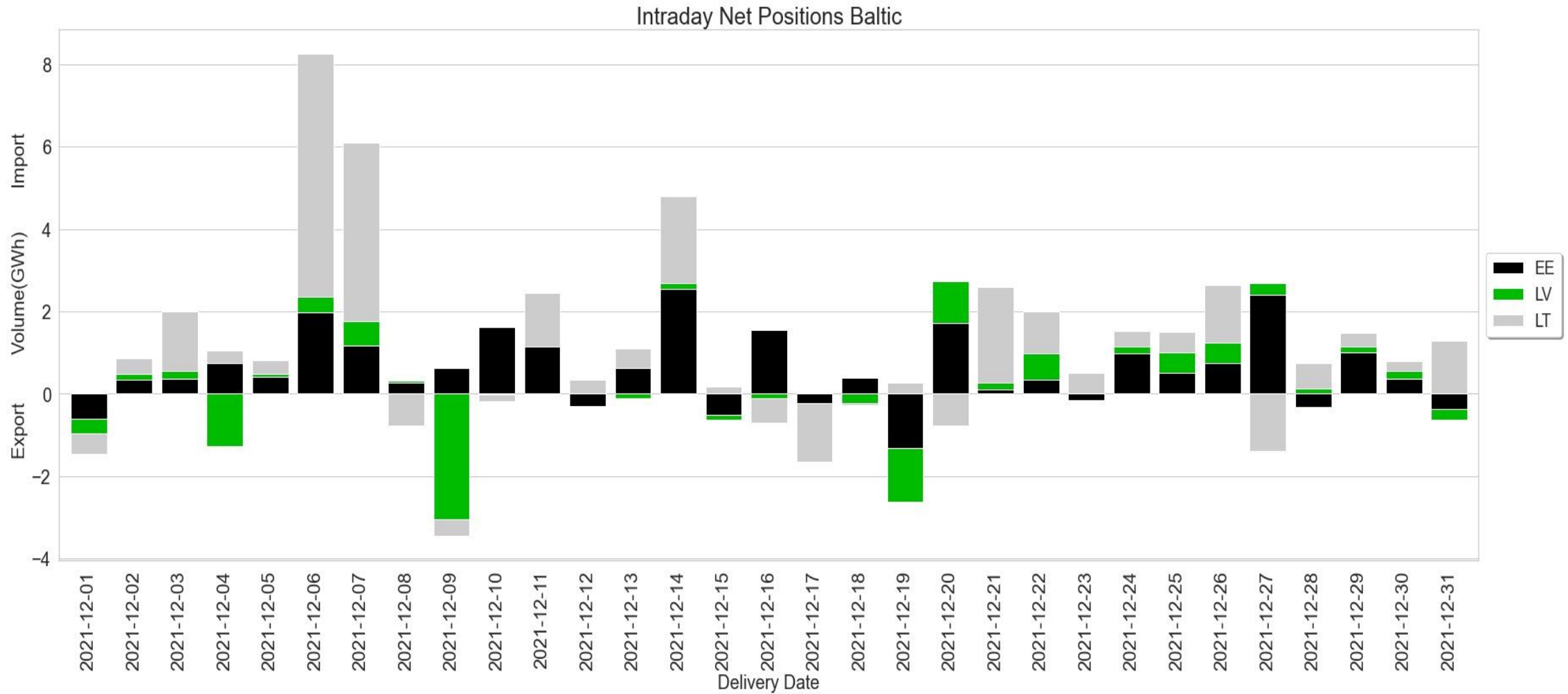
8. Net positions (2/11)



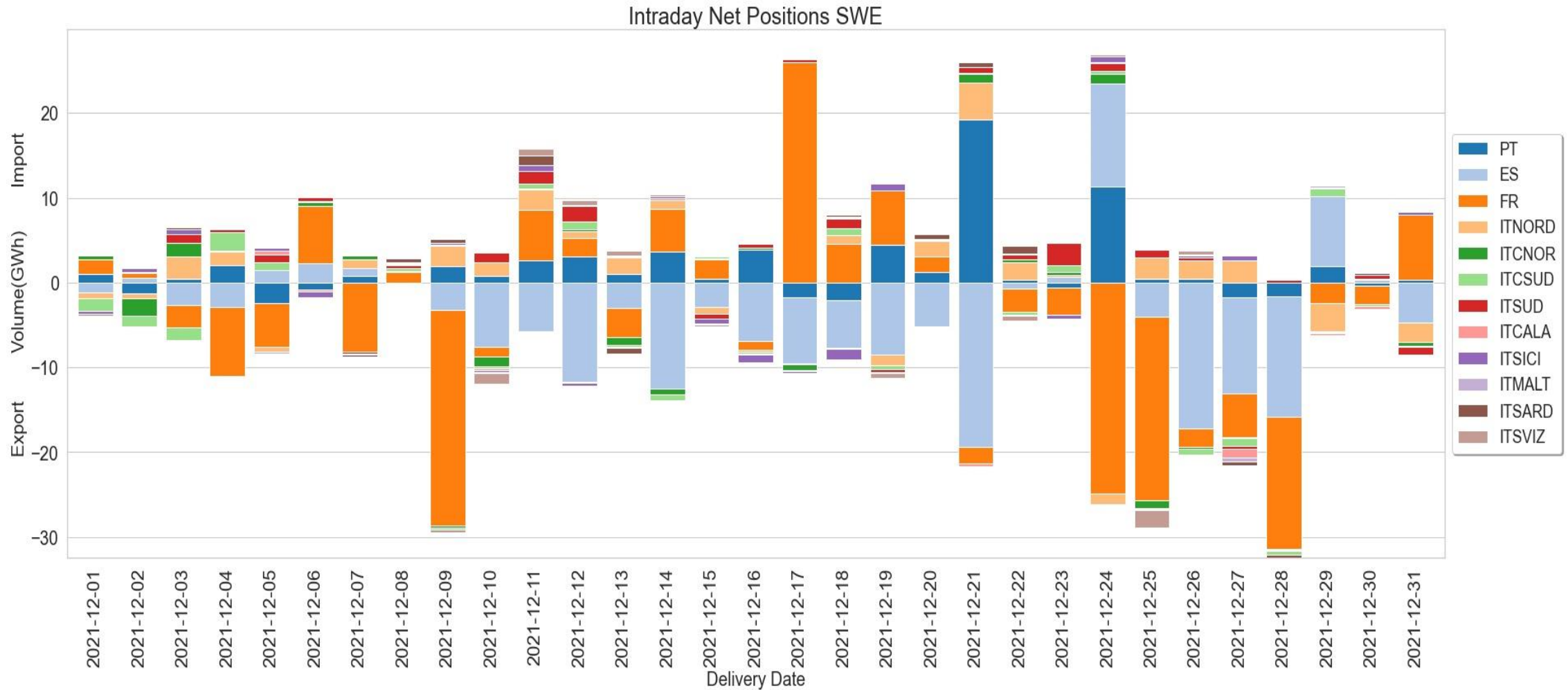
8. Net positions (3/11)



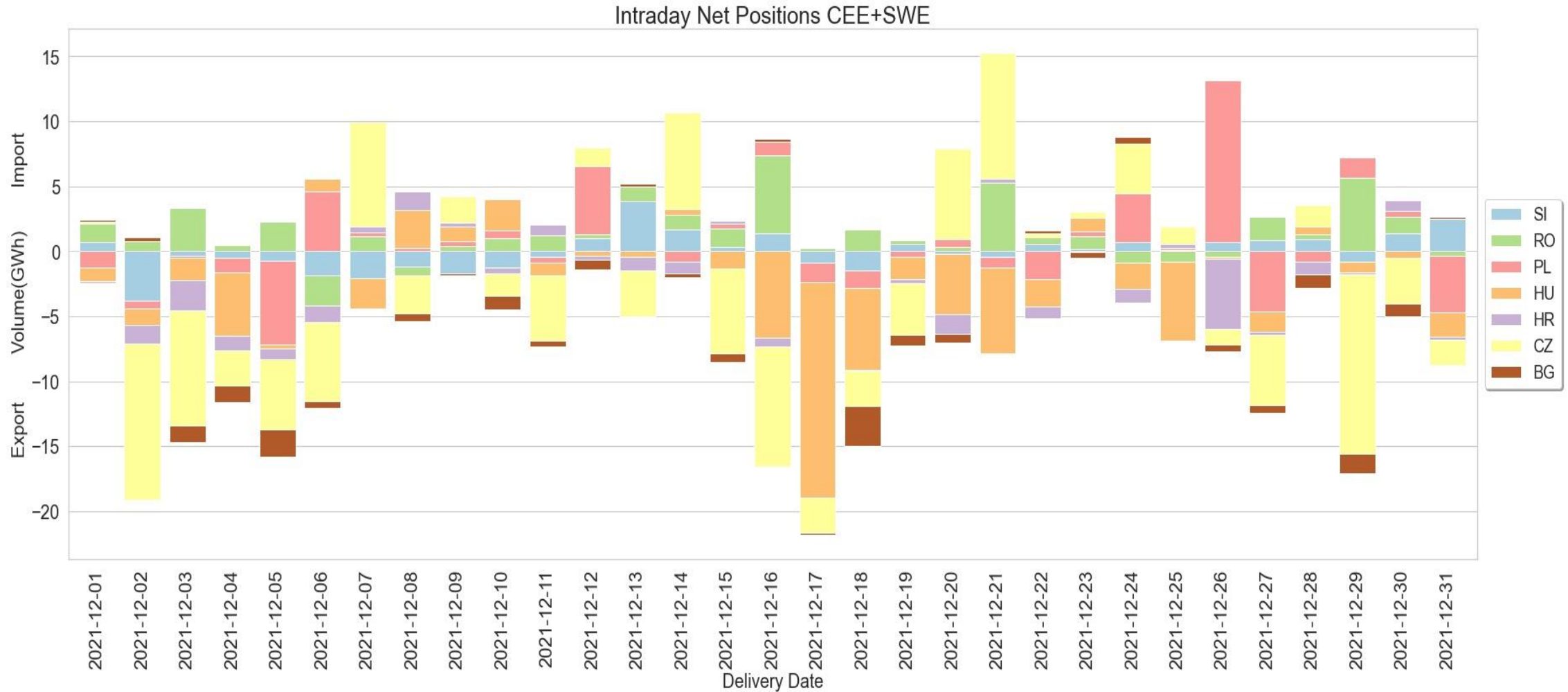
8. Net positions (4/11)



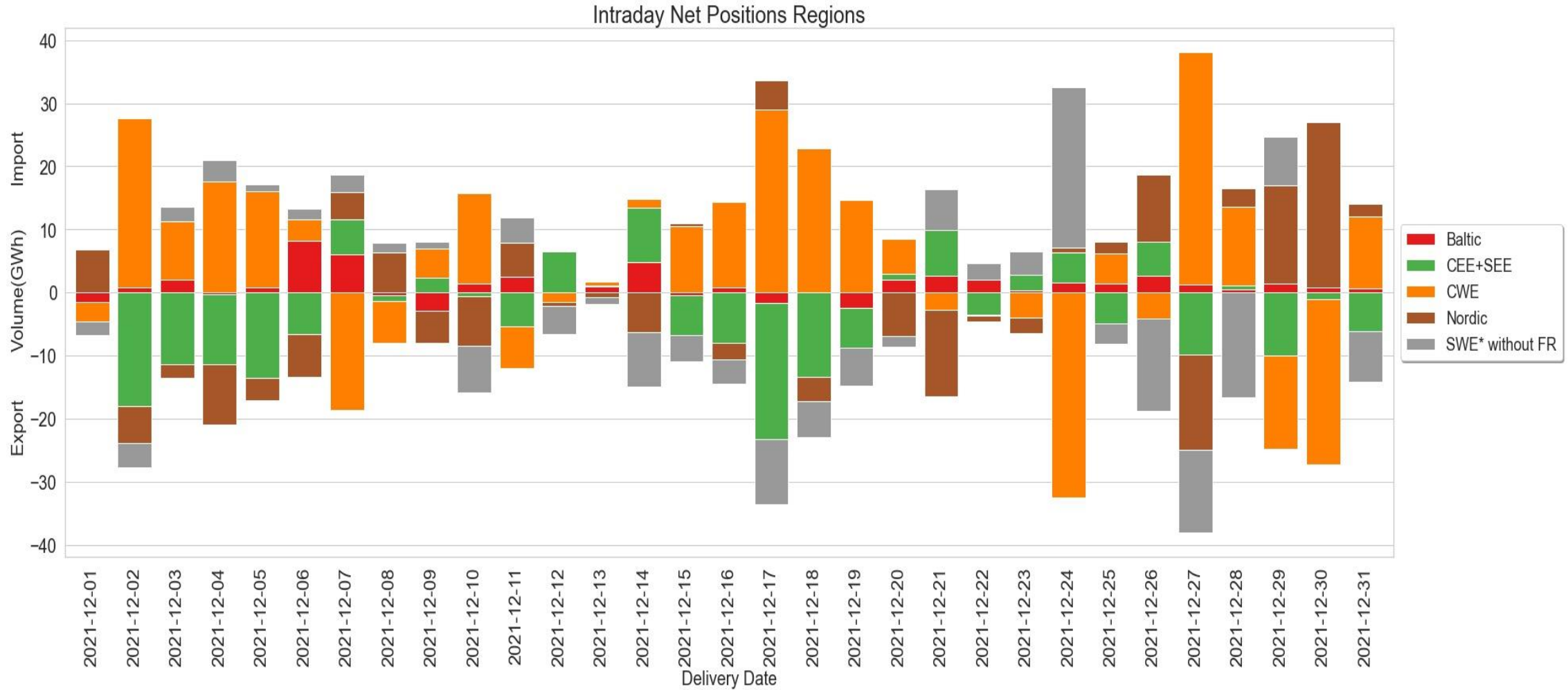
8. Net positions (5/11)



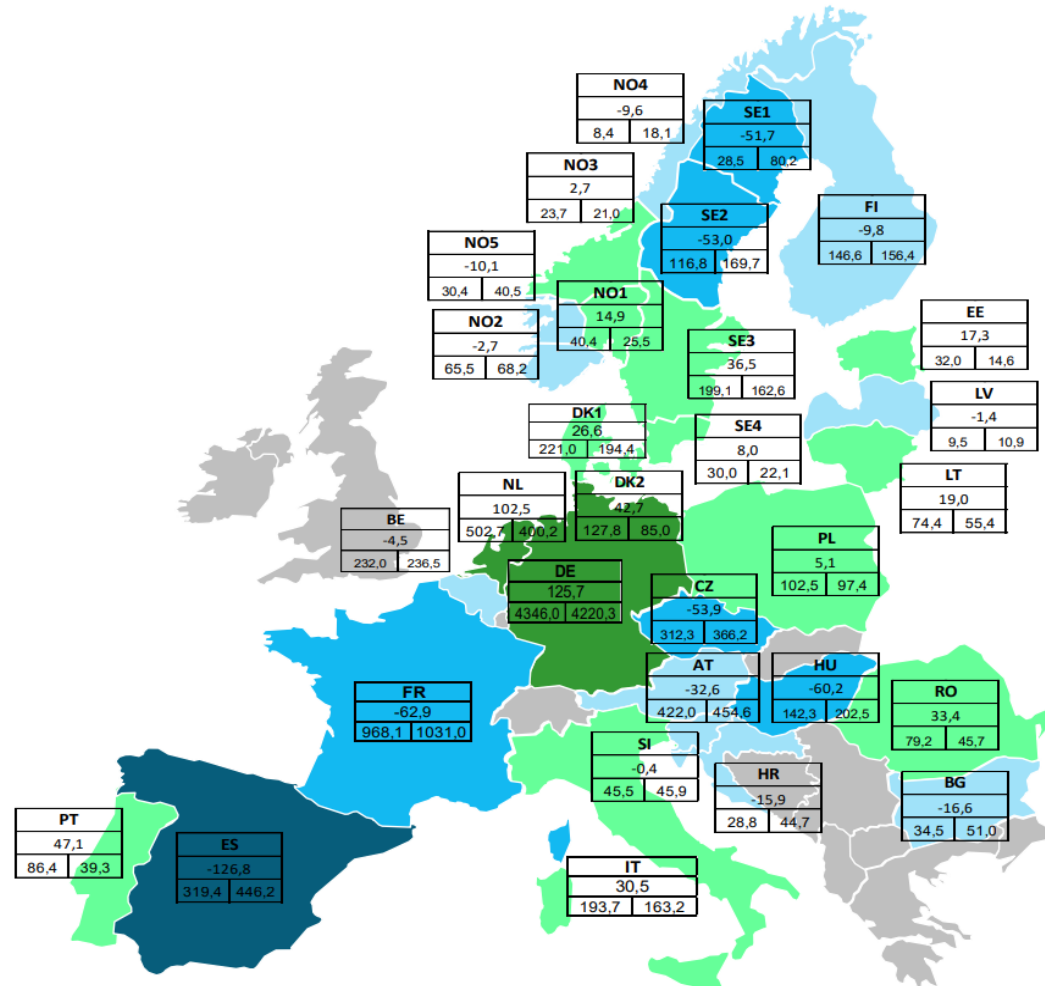
8. Net positions (6/11)



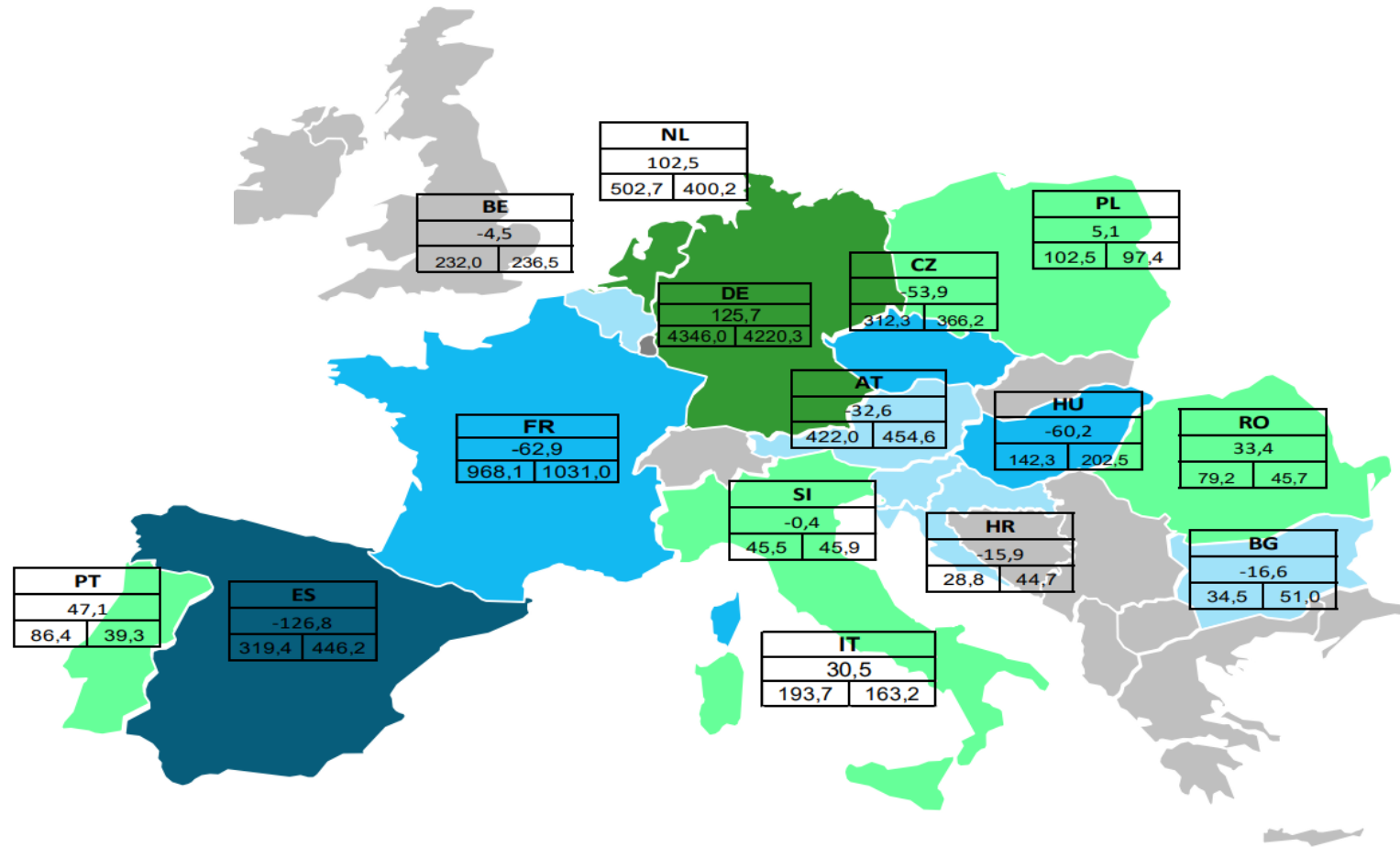
8. Net positions (7/11)



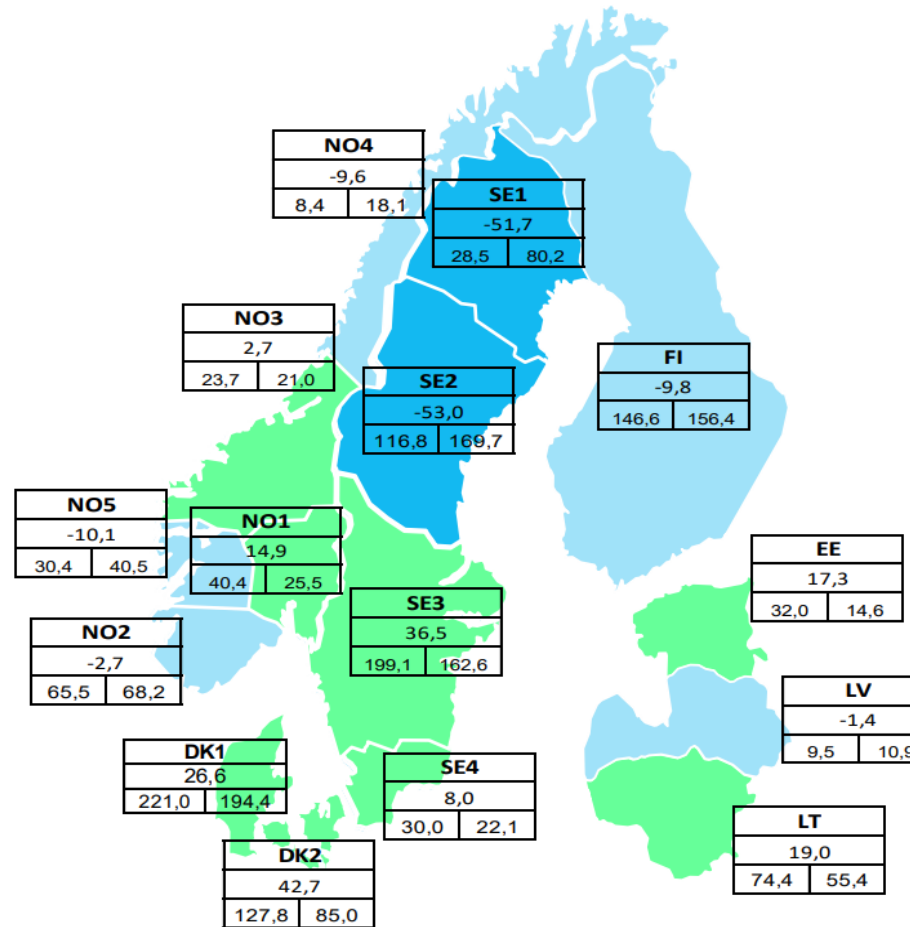
8. Net positions (8/11)



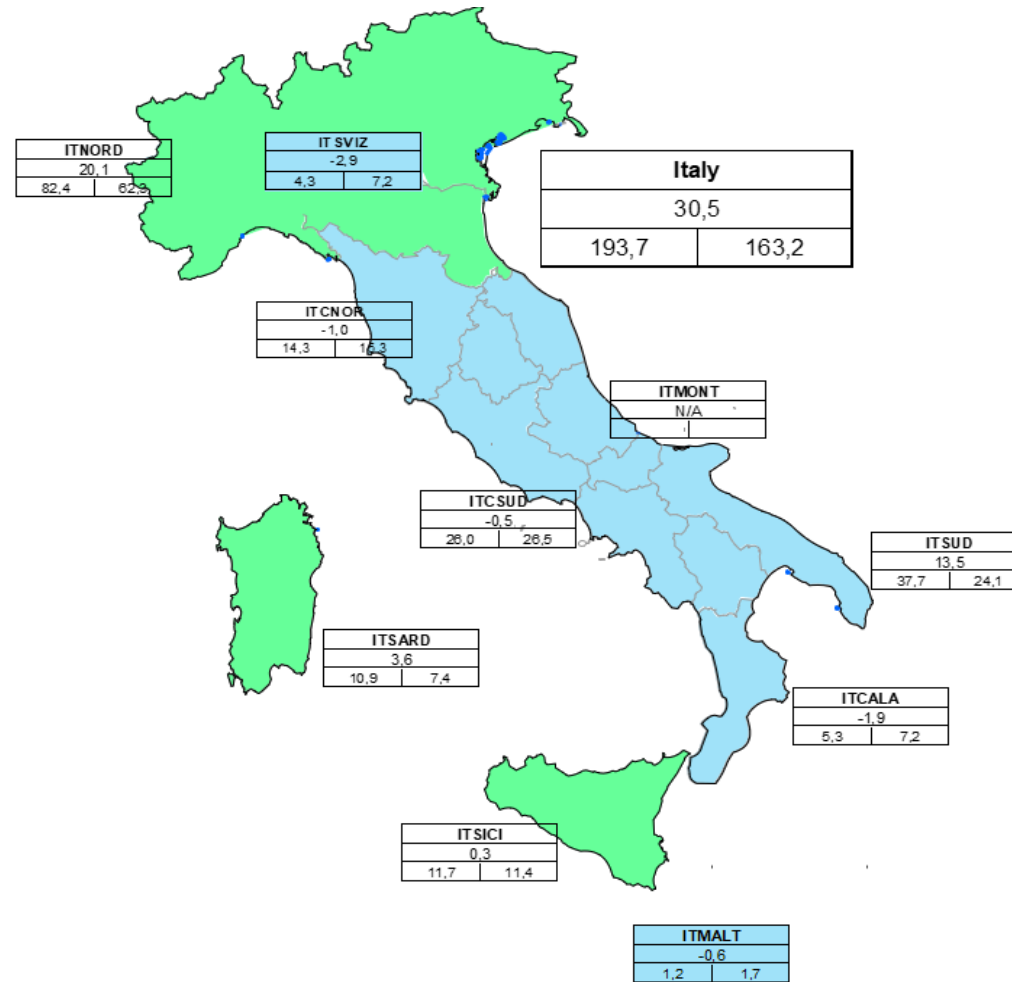
8. Net positions (9/11)



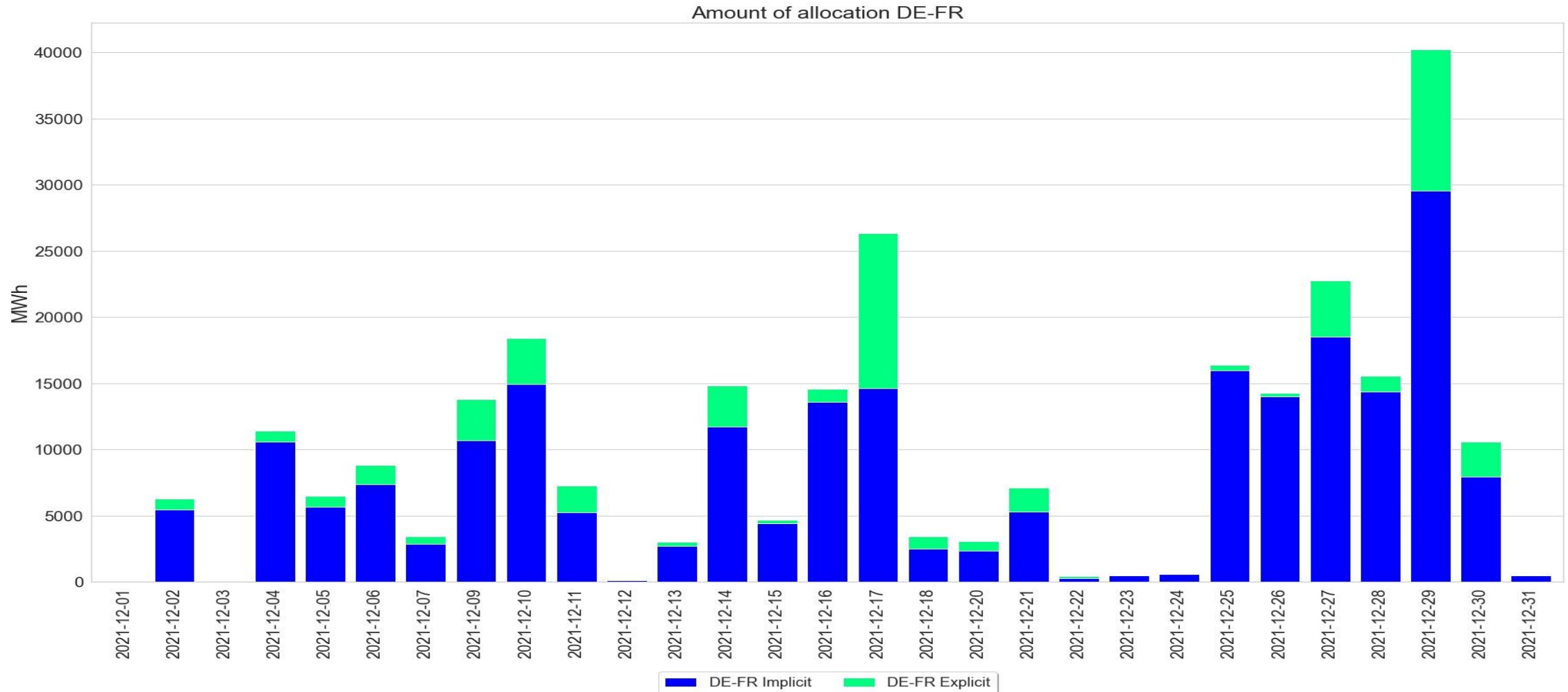
8. Net positions (10/11)



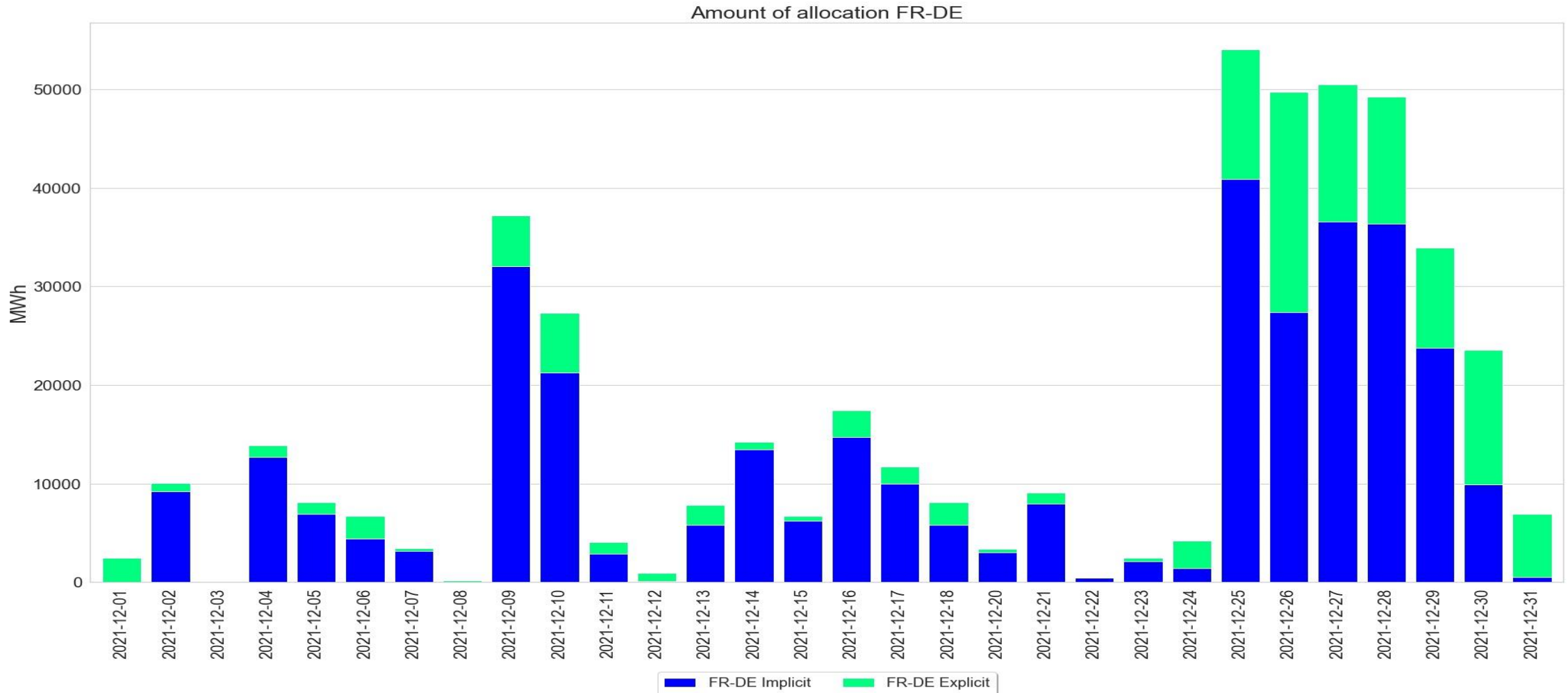
8. Net positions (11/11)



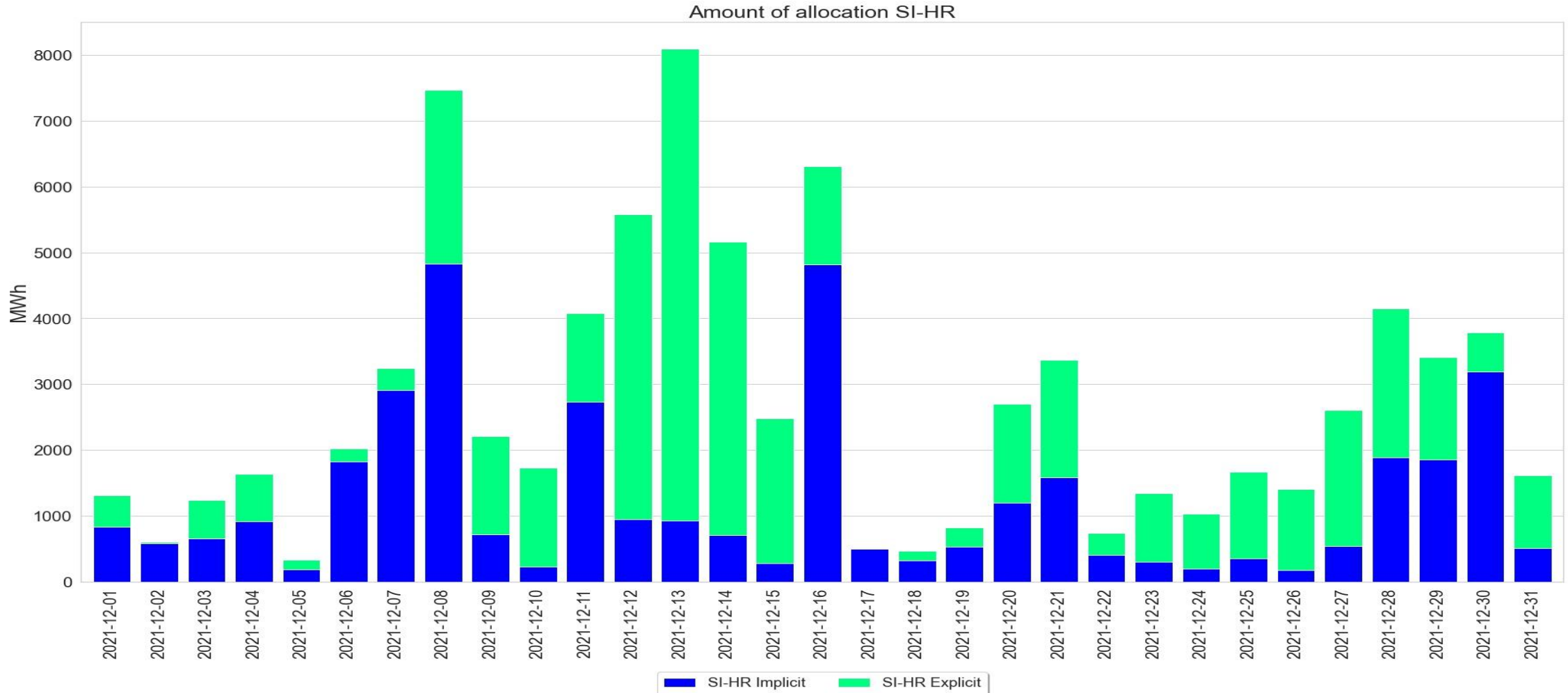
9. Total amount of explicit capacity allocation (1/4)



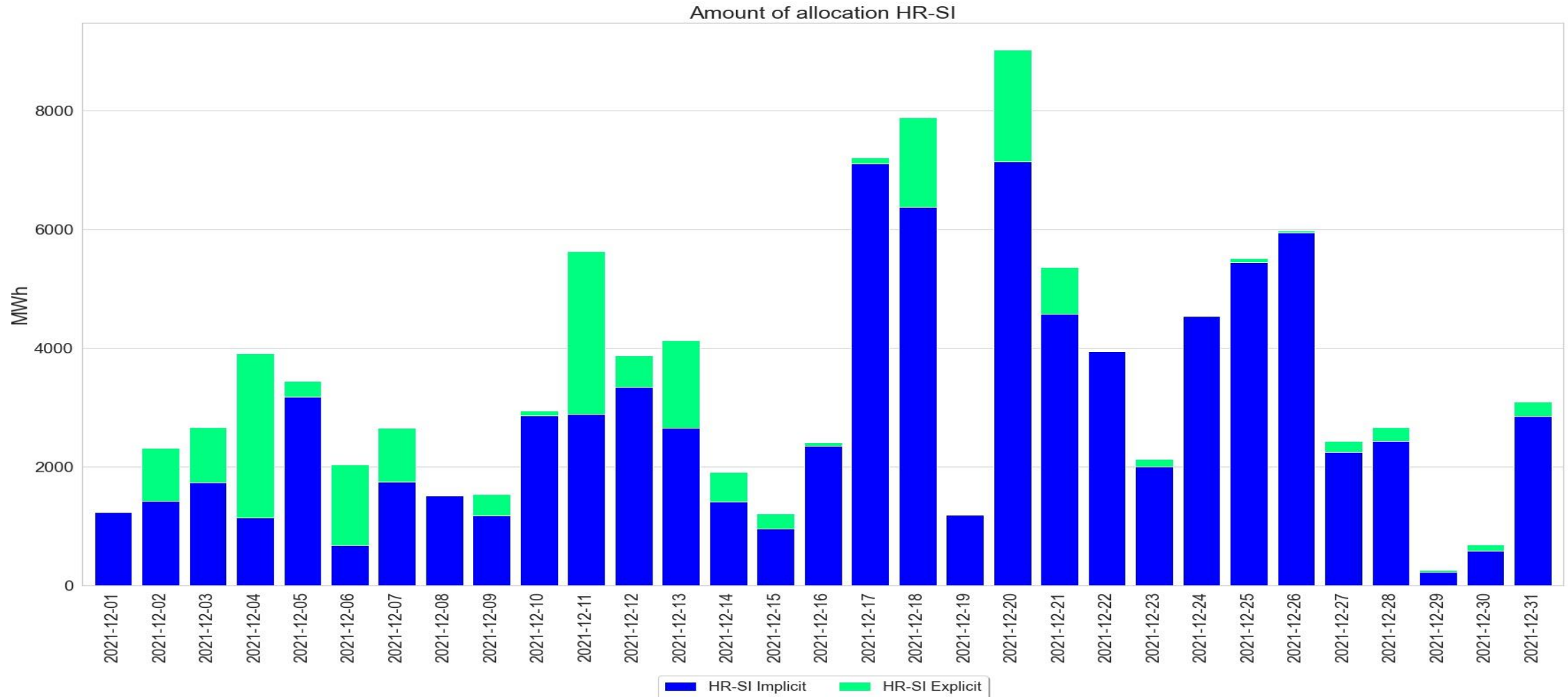
9. Total amount of explicit capacity allocation (2/4)



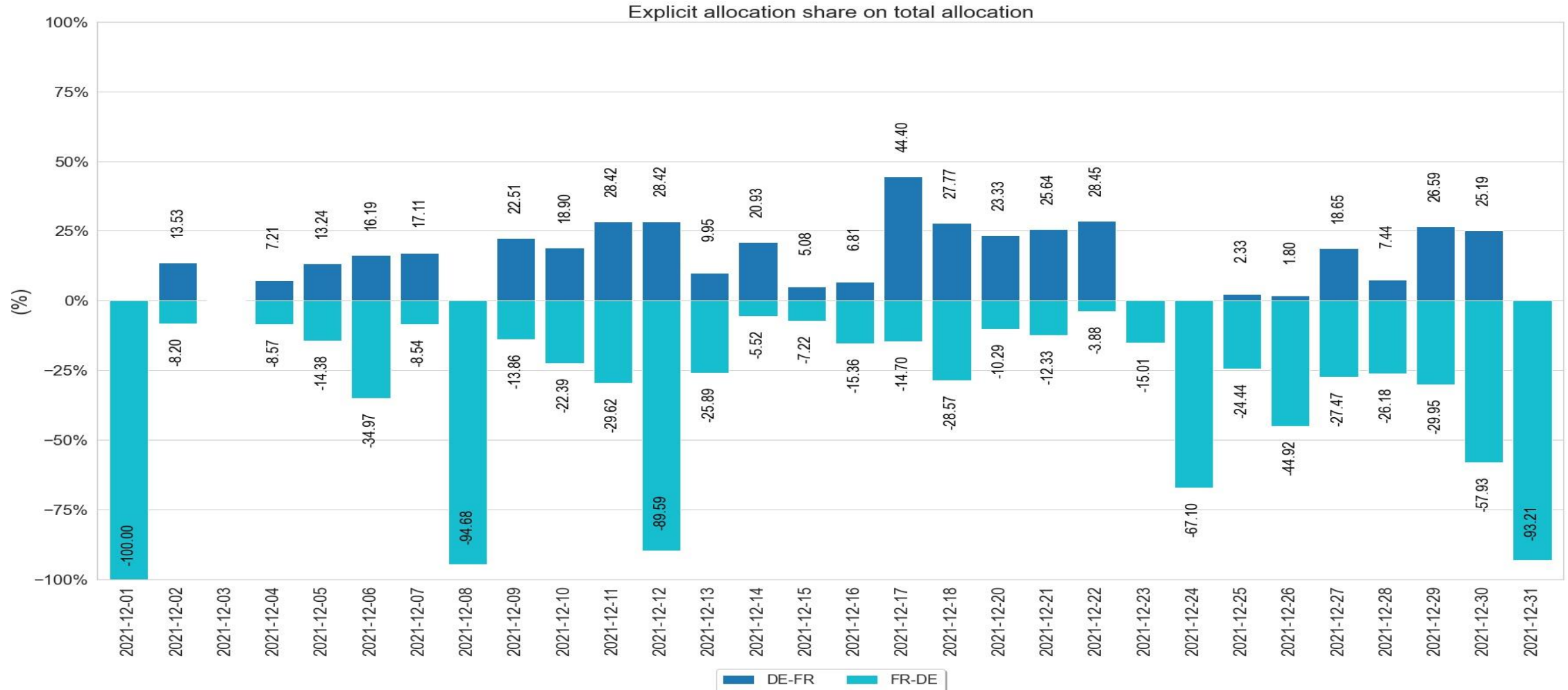
9. Total amount of explicit capacity allocation (3/4)



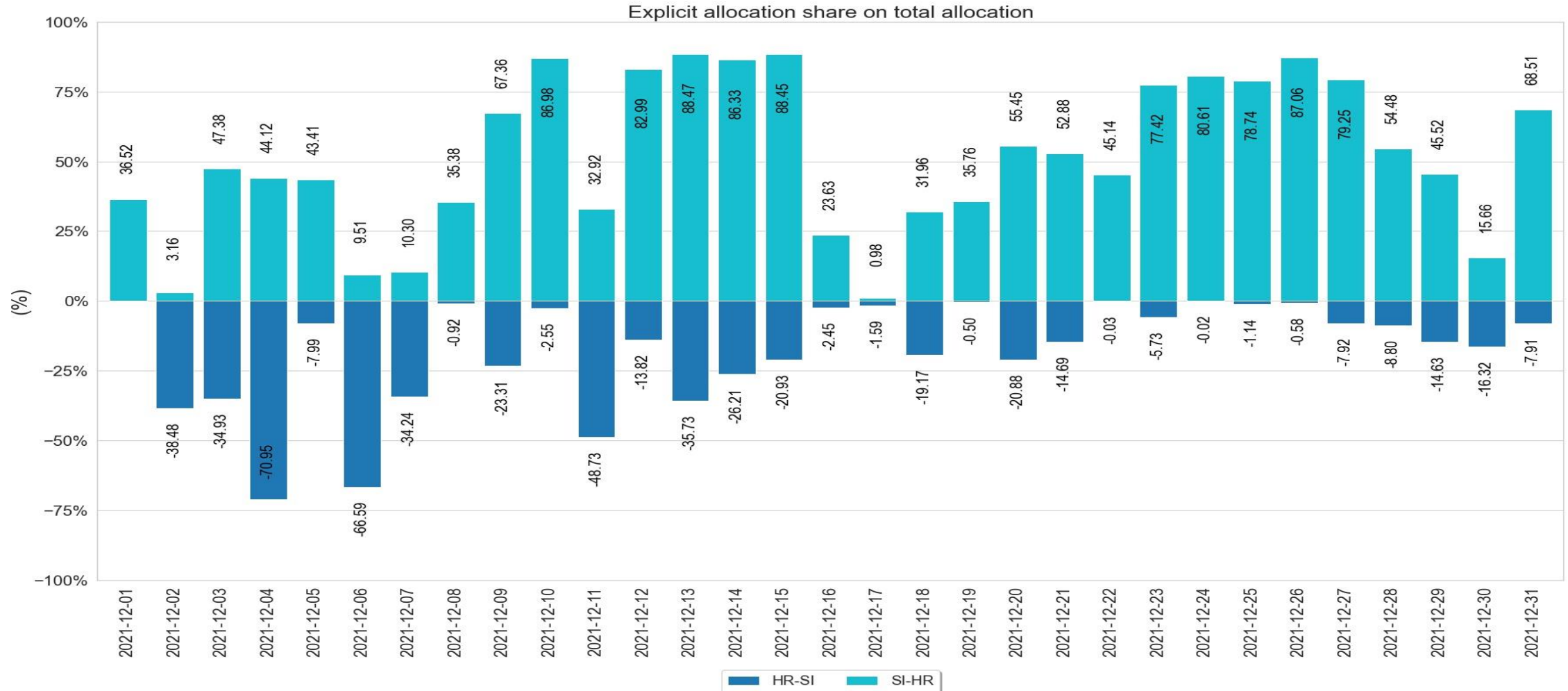
9. Total amount of explicit capacity allocation (4/4)



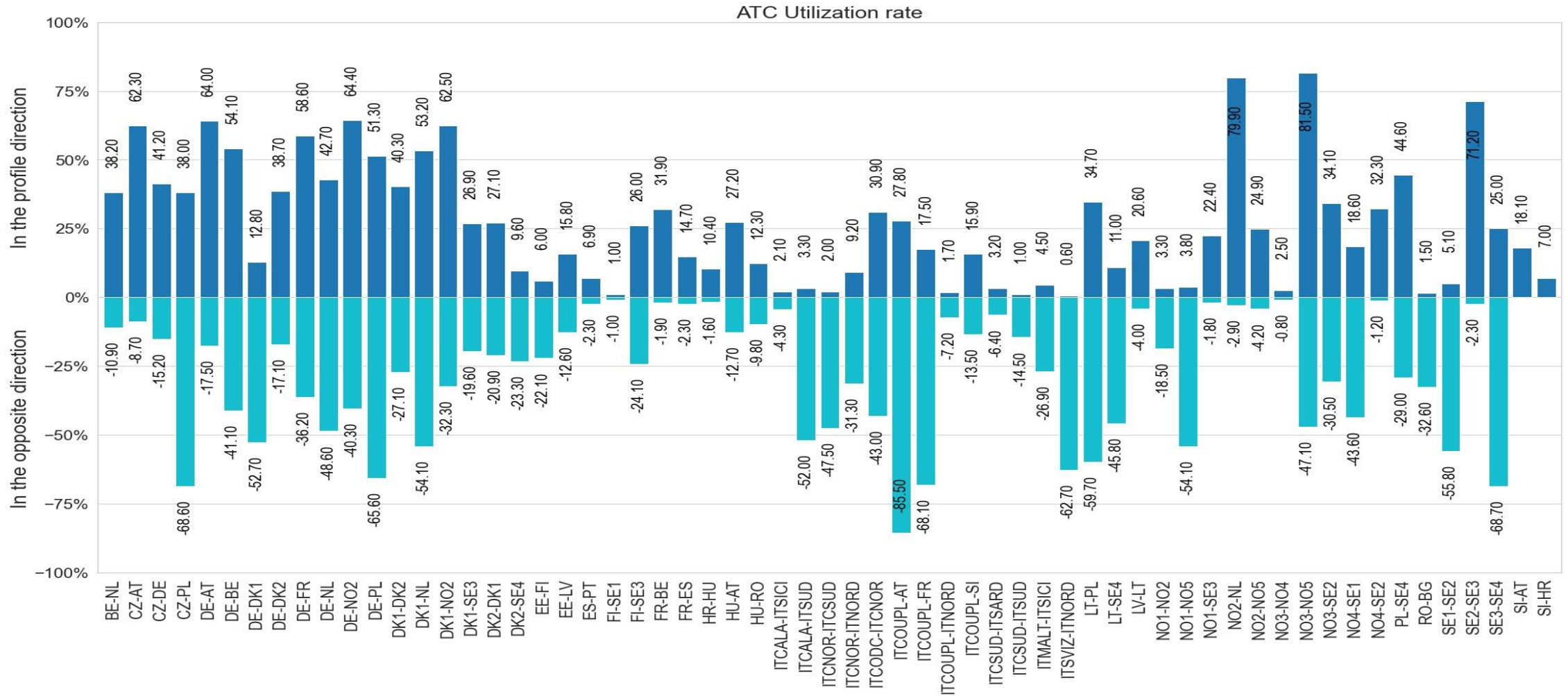
10. Explicit allocation share on total allocation (1/2)



10. Explicit allocation share on total allocation (2/2)



11. ATC utilization rate



12. Evolution of order events and trades

