



# SIDC Stakeholder Report

October 2021



# List of contents

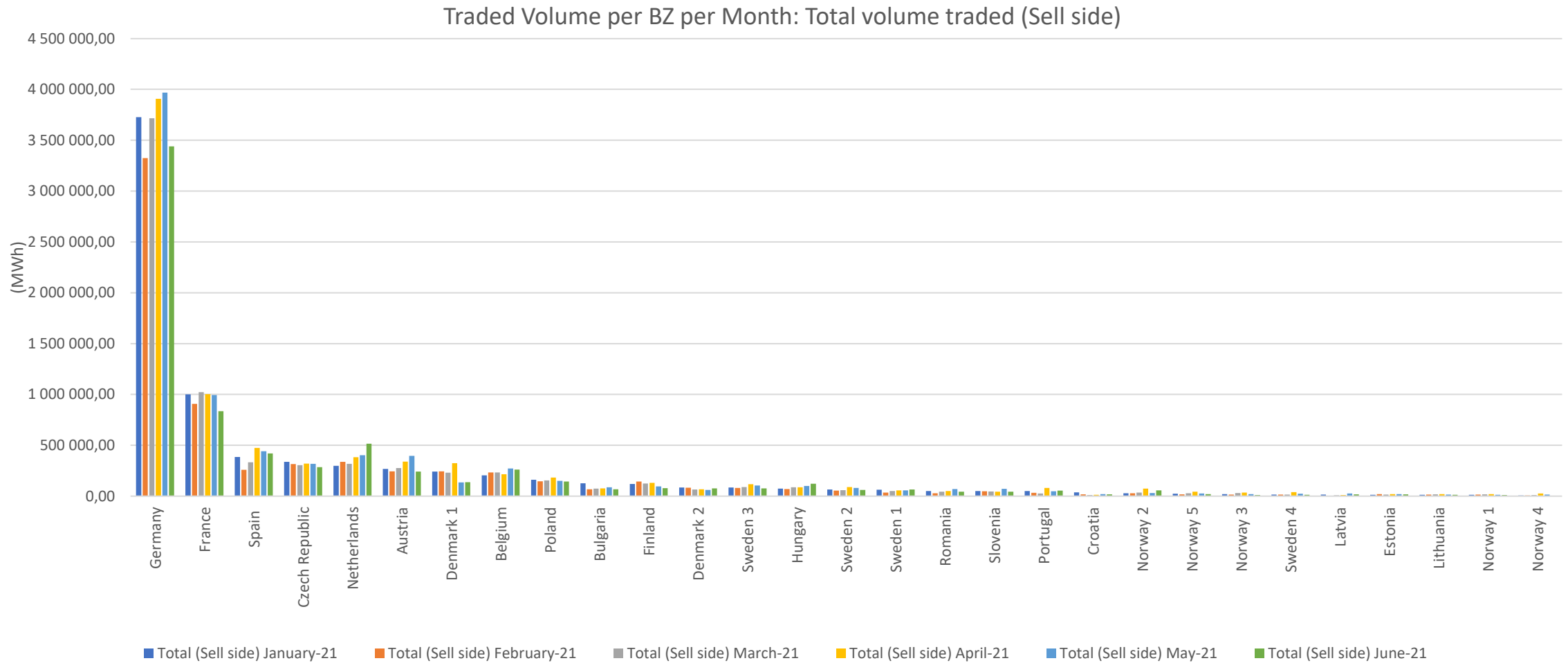
H1 2021 data	1	Traded volume per BZ per month	Slides 4-11
	2	Weighted average prices per MTU per BZ	Slides 12-13
	3	Overall volume traded across the coupled region	Slide 14
	4	Total volume matched hours before delivery	Slide 15
	5	Volume fractions of products per BZ per month (%)	Slides 16-19
	6	Share of cross-bidding zone trades vs. overall BZ volume	Slides 20-21
	7	Total availability of the central SIDC platform	Slide 22
10/2021 data	8	Net positions	Slides 23-33
	9	Total amount of explicit capacity allocation	Slides 34-37
	10	Explicit allocation share on total allocation	Slides 38-39
	11	ATC utilization rate	Slide 40
	12	Evolution of order events and trades	Slide 41

## Introduction

- This document contains charts on the indicators defined for SIDC stakeholder reporting.

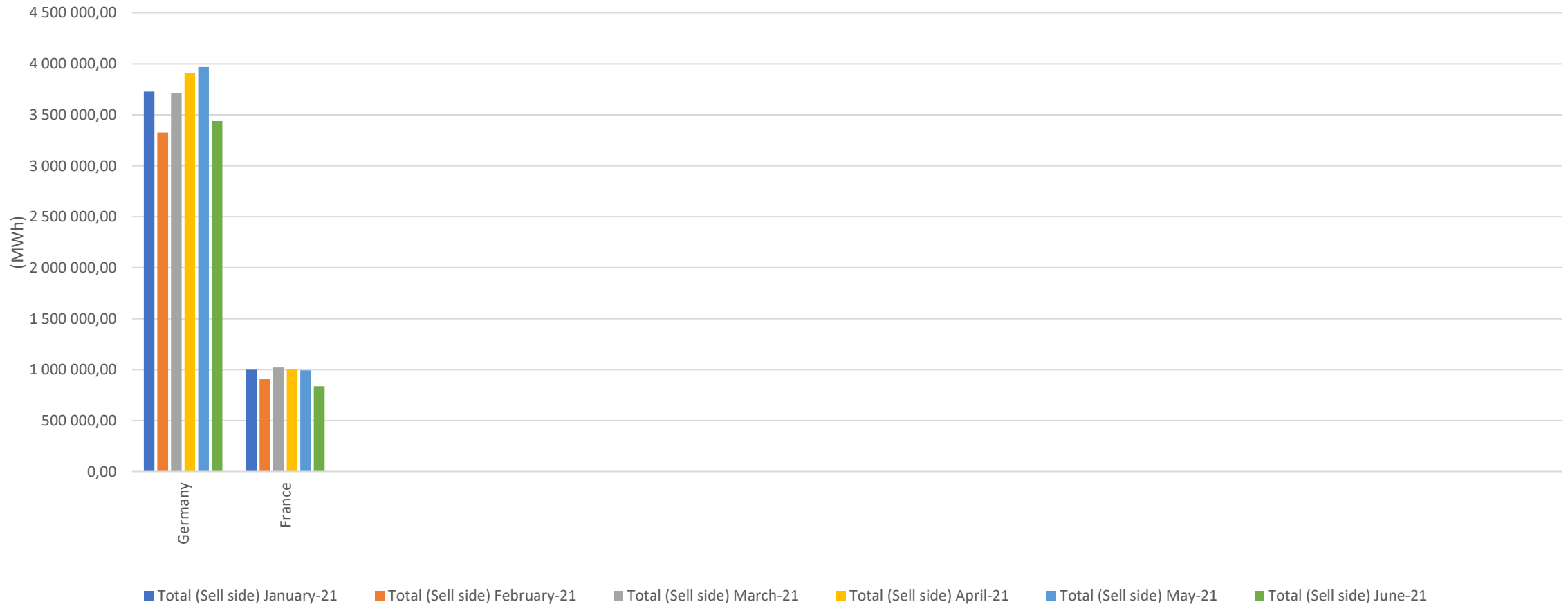
Indicator name	Indicator Description	Indicator generation period
<b>Traded Volume per BZ per Month</b>	Aggregated volume of all Trades within the Intraday Market Timeframe per Bidding Zone	Half-yearly (H1, H2), reported monthly
<b>Weighted Average prices per MTU per BZ</b>	The indicators counts the volume-weighted average price of all Trades per contract per Bidding Zone	Half-yearly (H1, H2), reported monthly
<b>Overall volume traded across the coupled region (Overall volume traded in XBID)</b>	Aggregated volume of all Trades within the Intraday Market Timeframe	Half-yearly (H1, H2), reported monthly
<b>Total volume matched hours before delivery</b>	This indicator counts the traded volumes, grouped per contract with same “delivery time start-end”, per combination of Bidding Zones and grouped according to the hours left to delivery and aggregated per month	Half-yearly (H1, H2), reported monthly
<b>Volume fractions of products per BZ per Month (%)</b>	This indicator counts for each Bidding Zone the traded volumes per products as a percentage of the total traded volume of the Bidding Zone.	Half-yearly (H1, H2), reported monthly
<b>Share of cross-bidding zone trades vs. overall BZ volume</b>	This indicator counts per Bidding Zone the traded volumes on Bidding Zone borders versus the aggregated volume of all Trades within the Intraday Market Timeframe	Half-yearly (H1, H2), reported monthly
<b>Total availability of the central SIDC platform</b>	This indicator represents the central SIDC platform aggregated availability in percentage.	Monthly
<b>Net Positions</b>	This indicator counts (calculates) the Net Positions for each Bidding Zone per MTU level.	Monthly
<b>Total amount of Explicit Capacity Allocation</b>	This indicator counts on a daily basis the total amount of Intraday Cross-Zonal Capacity, which do not derive from a Trade in the Shared Order Book, per direction (import/export).	Monthly
<b>Explicit allocation share on total allocation</b>	This indicator reports on share of Explicit allocation compared to total allocations per BZ border where explicit allocations are offered to the market.	Monthly
<b>ATC utilization rate</b>	ratio for each MTU calculated from the Allocated netted Intraday Capacity / offered Intraday capacity for each border in both directions	Monthly
<b>Evolution of the order events and trades</b>	This indicator reports on daily Order Transactions and Trades since the first complete day of trading.	Monthly

# 1. Traded volume per BZ per month (1/8)



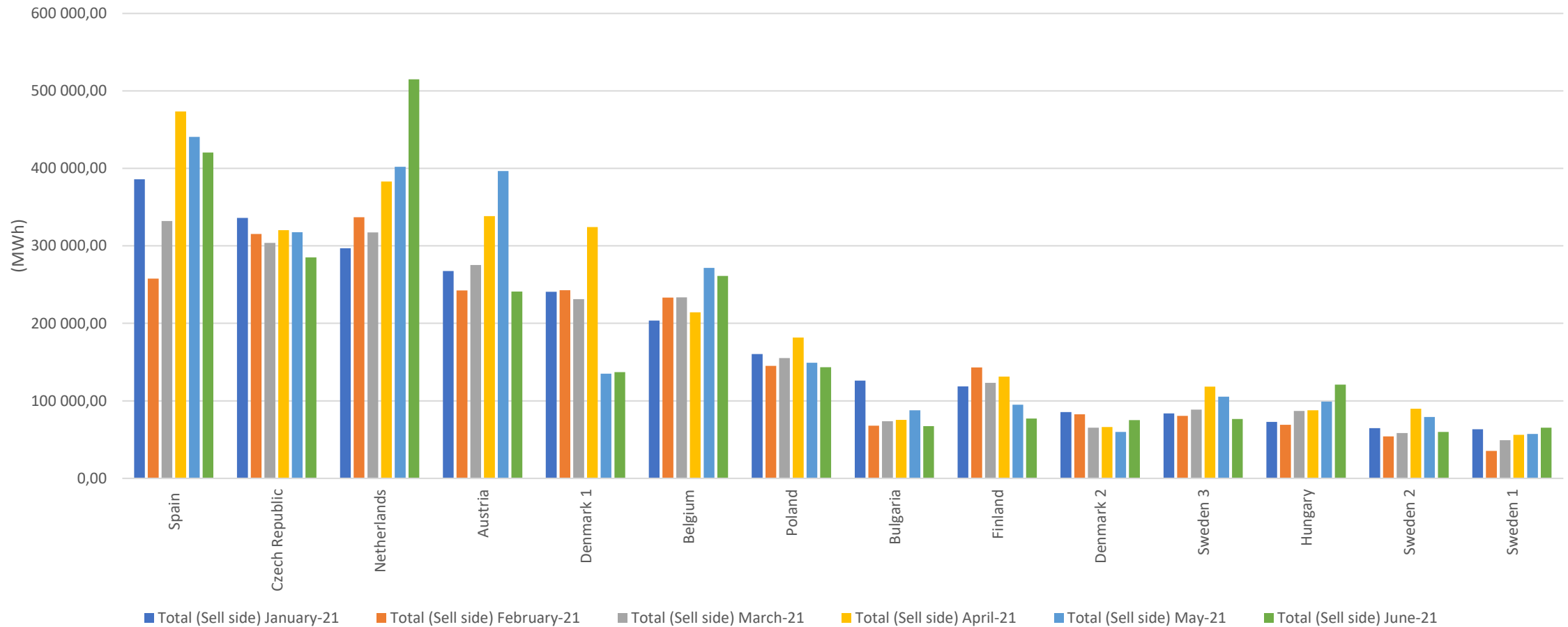
# 1. Traded volume per BZ per month (2/8)

Traded Volume per BZ per Month: Total volume traded (Sell side)



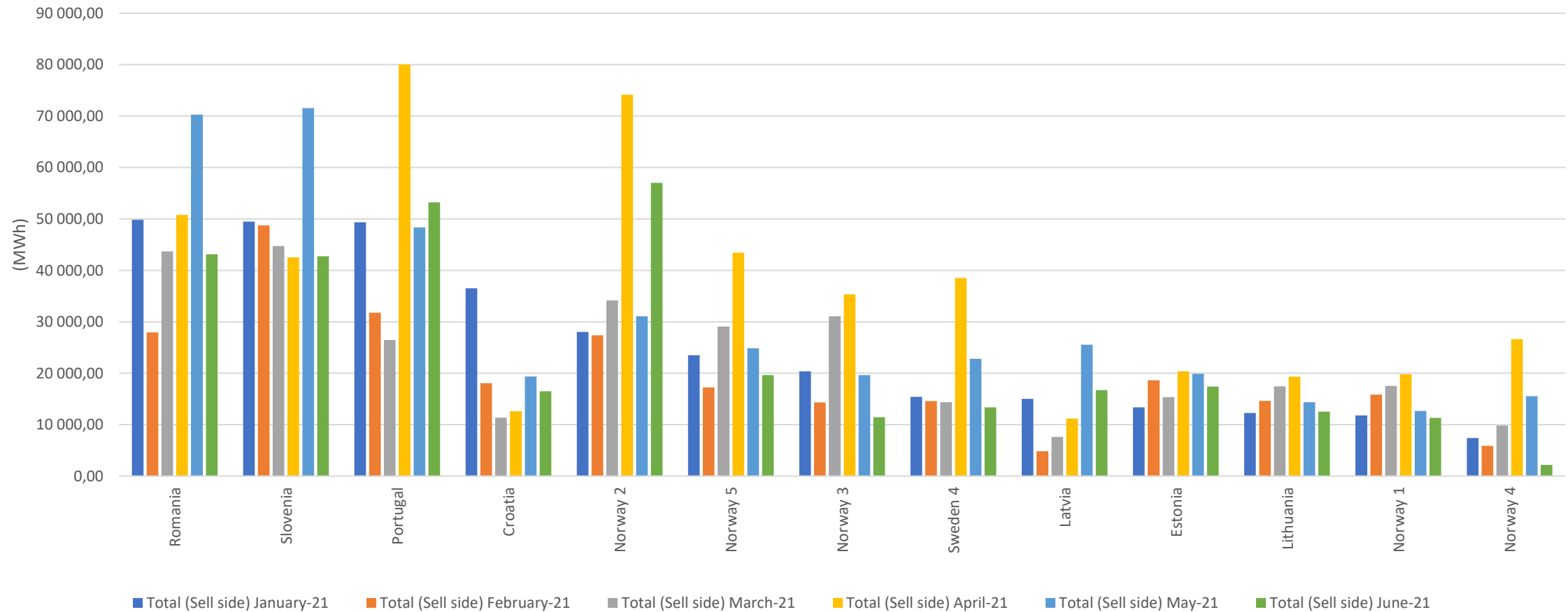
# 1. Traded volume per BZ per month (3/8)

Traded Volume per BZ per Month: Total volume traded (Sell side)



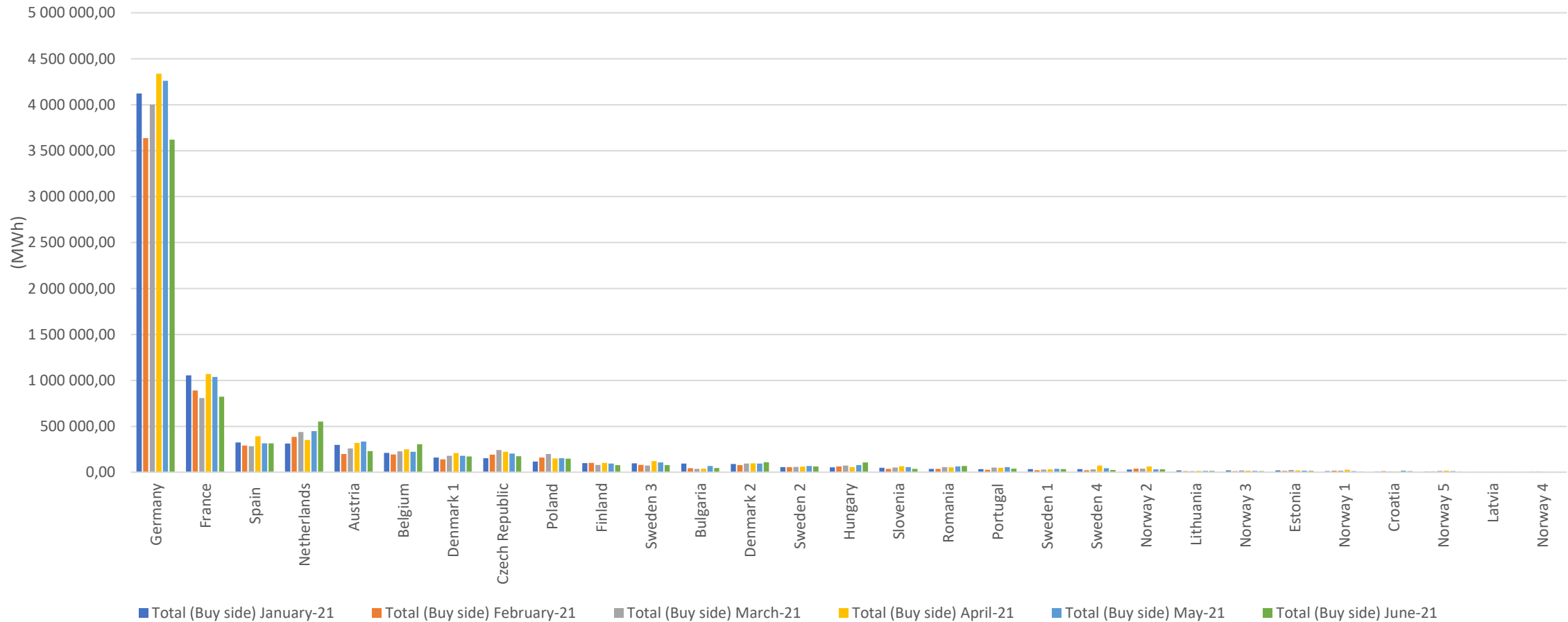
# 1. Traded volume per BZ per month (4/8)

Traded Volume per BZ per Month: Total volume traded (Sell side)



# 1. Traded volume per BZ per month (5/8)

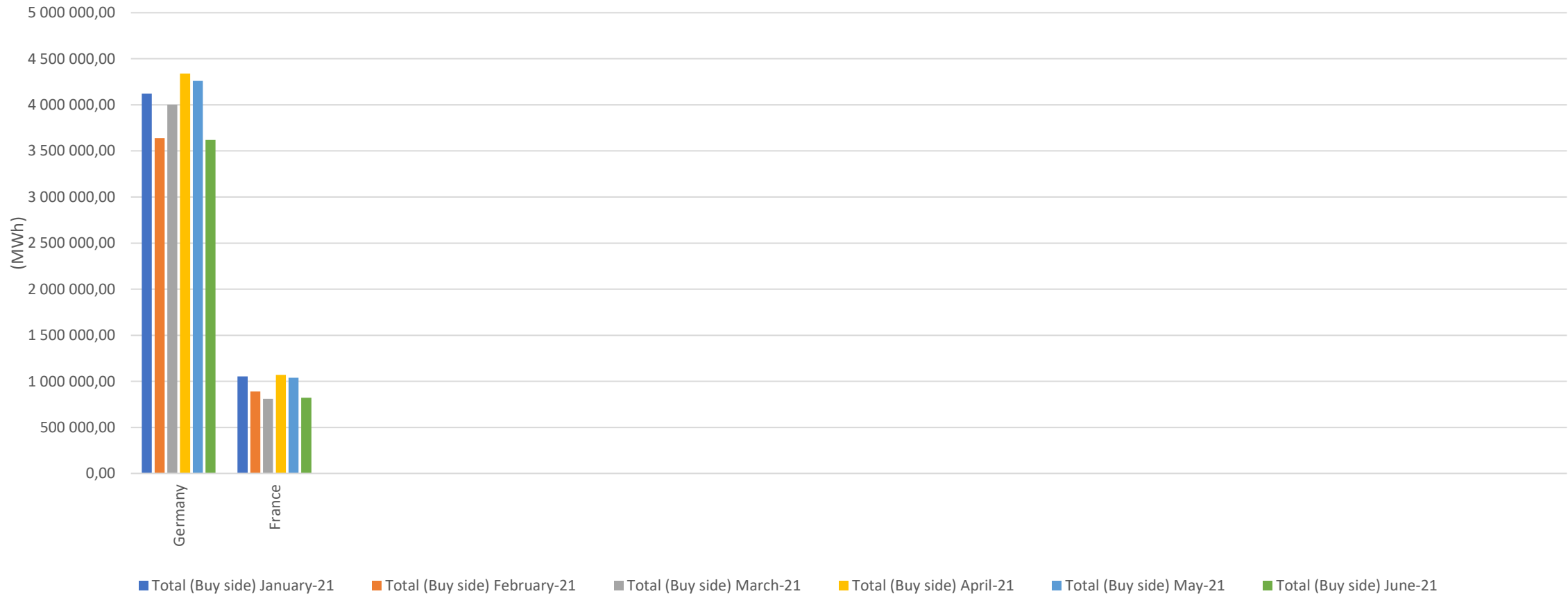
Traded Volume per BZ per Month: Total volume traded (Buy side)





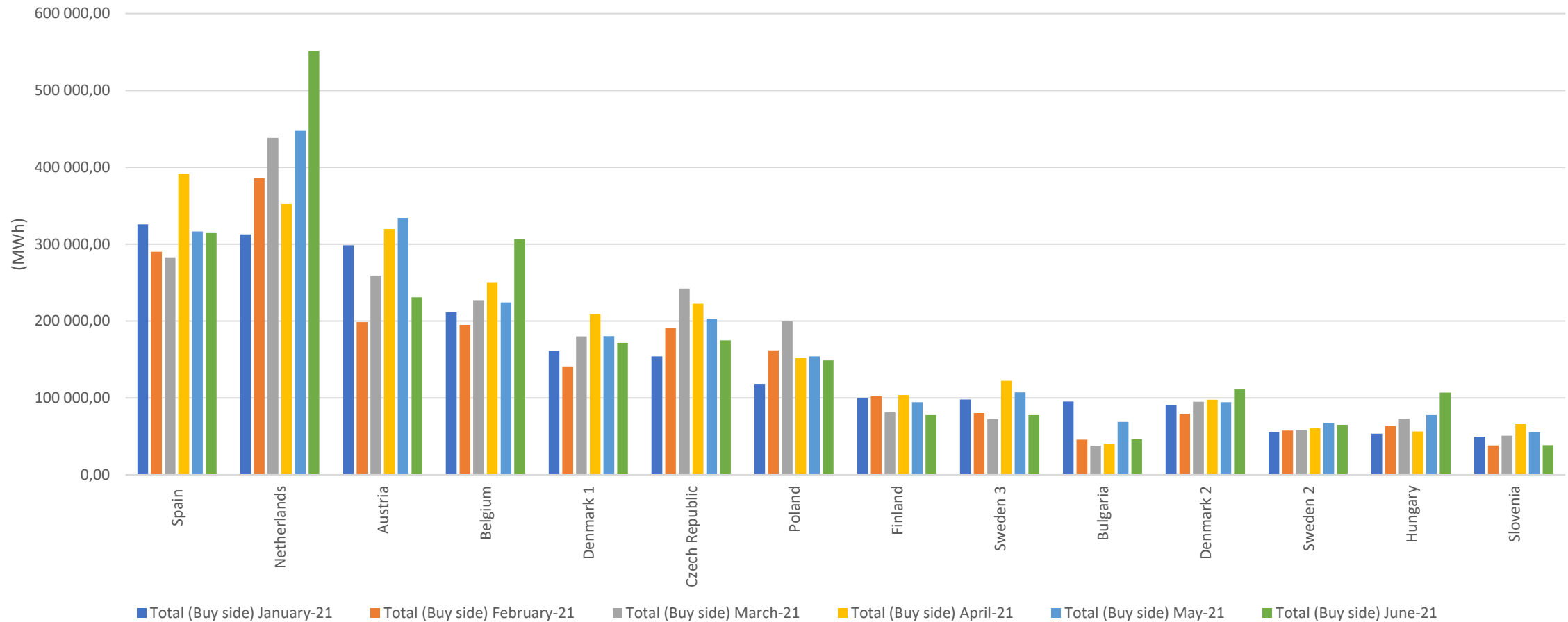
# 1. Traded volume per BZ per month (6/8)

Traded Volume per BZ per Month: Total volume traded (Buy side)



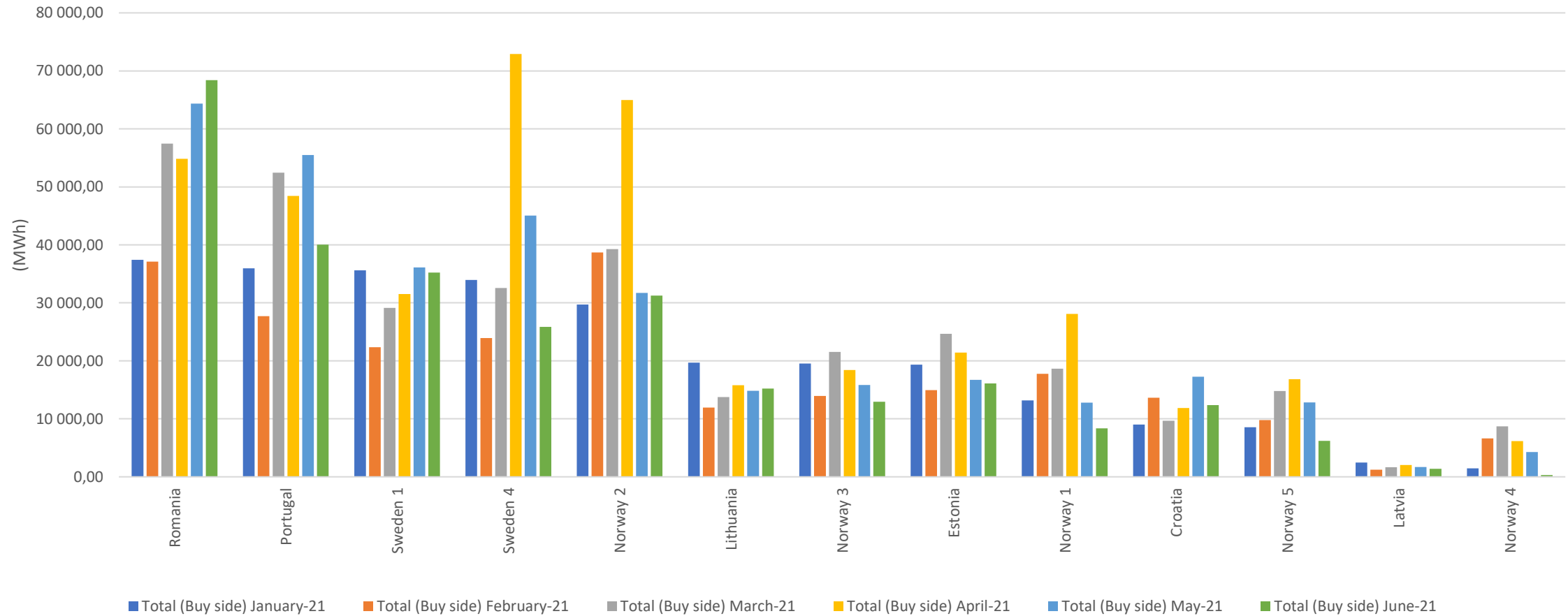
# 1. Traded volume per BZ per month (7/8)

Traded Volume per BZ per Month: Total volume traded (Buy side)

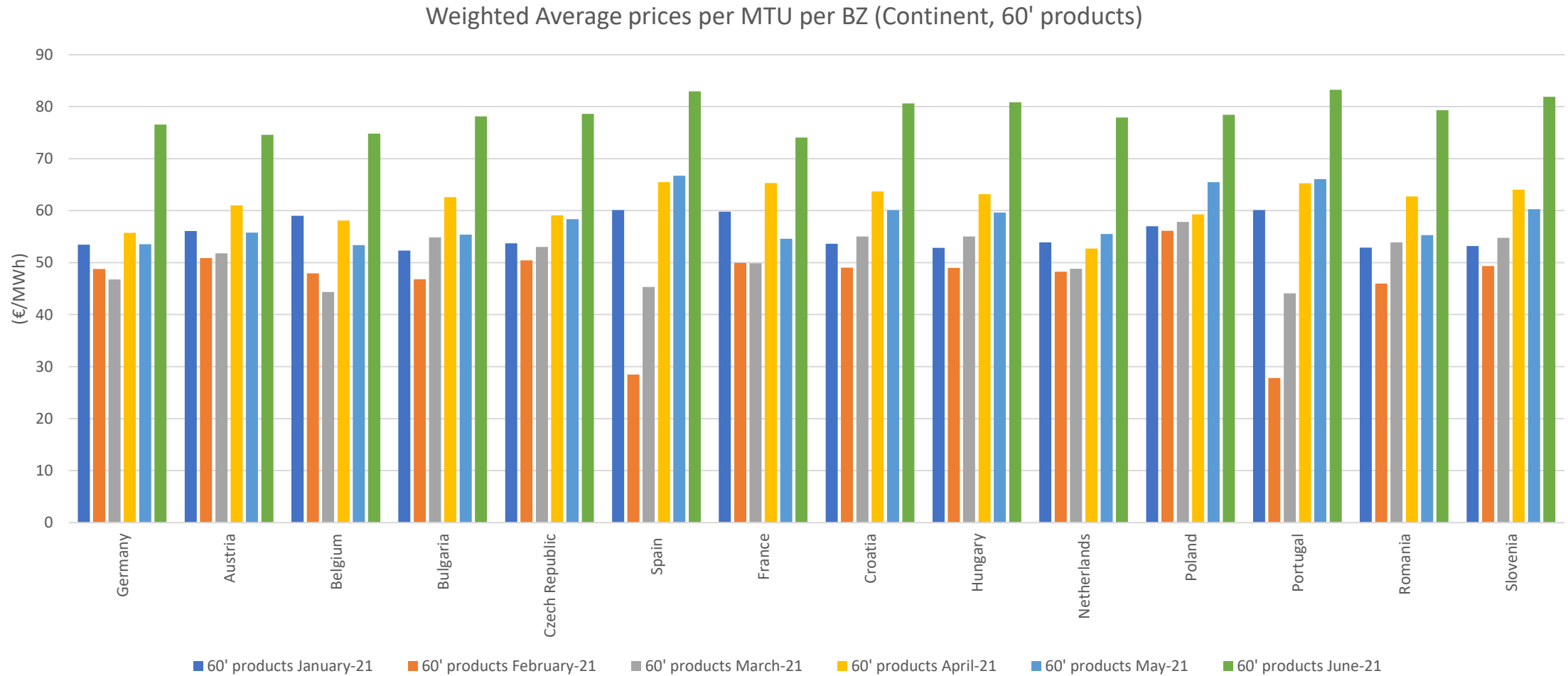


# 1. Traded volume per BZ per month (8/8)

Traded Volume per BZ per Month: Total volume traded (Buy side)

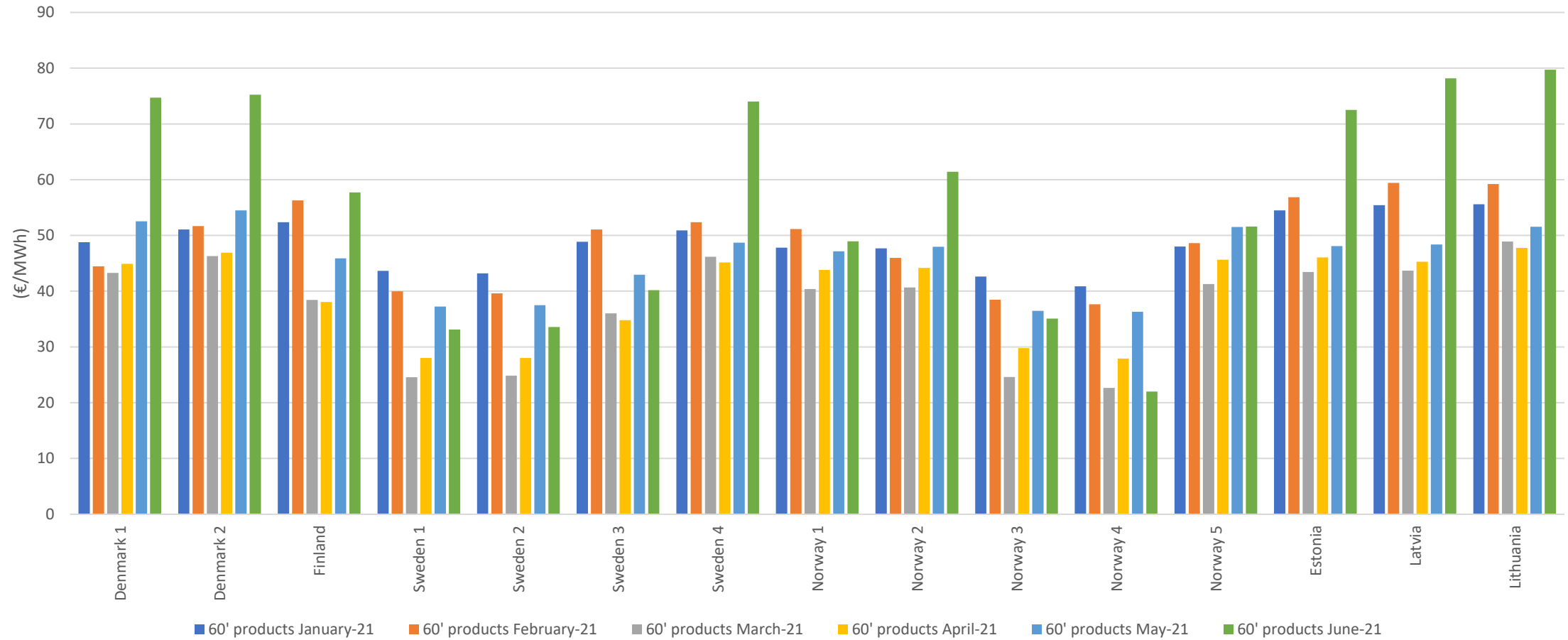


## 2. Weighted average prices per MTU per BZ (1/2)

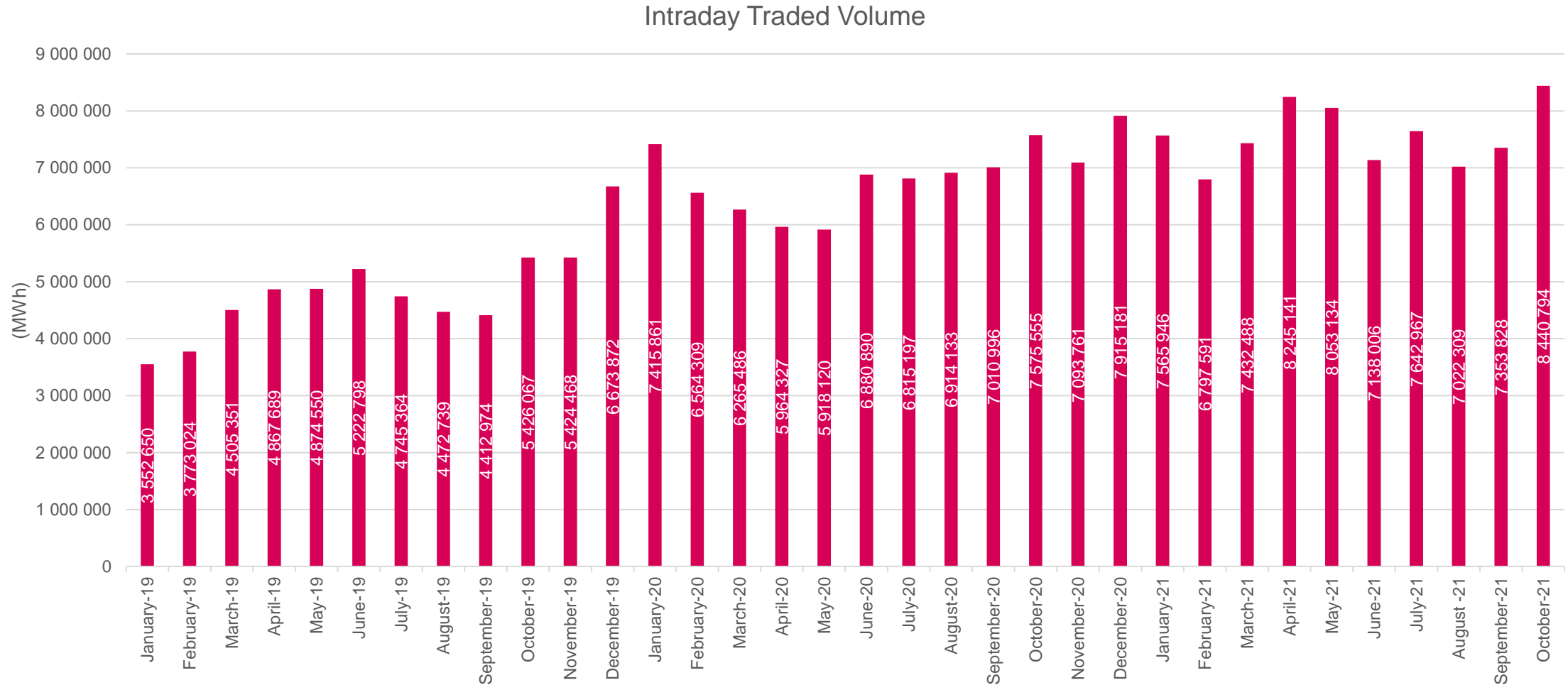


## 2. Weighted average prices per MTU per BZ (2/2)

Weighted Average prices per MTU per BZ (Nordic + Baltic, 60' products)

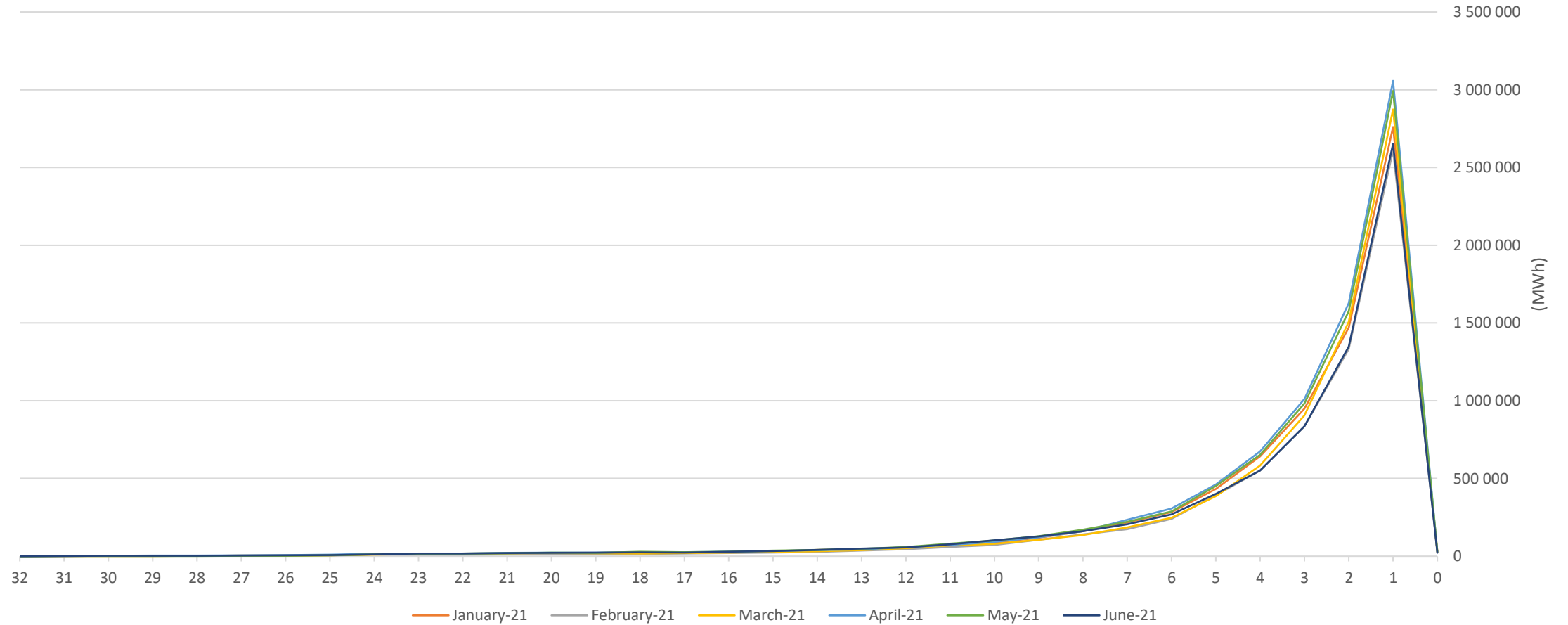


### 3. Overall volume traded across the coupled region



## 4. Total volume matched hours before delivery

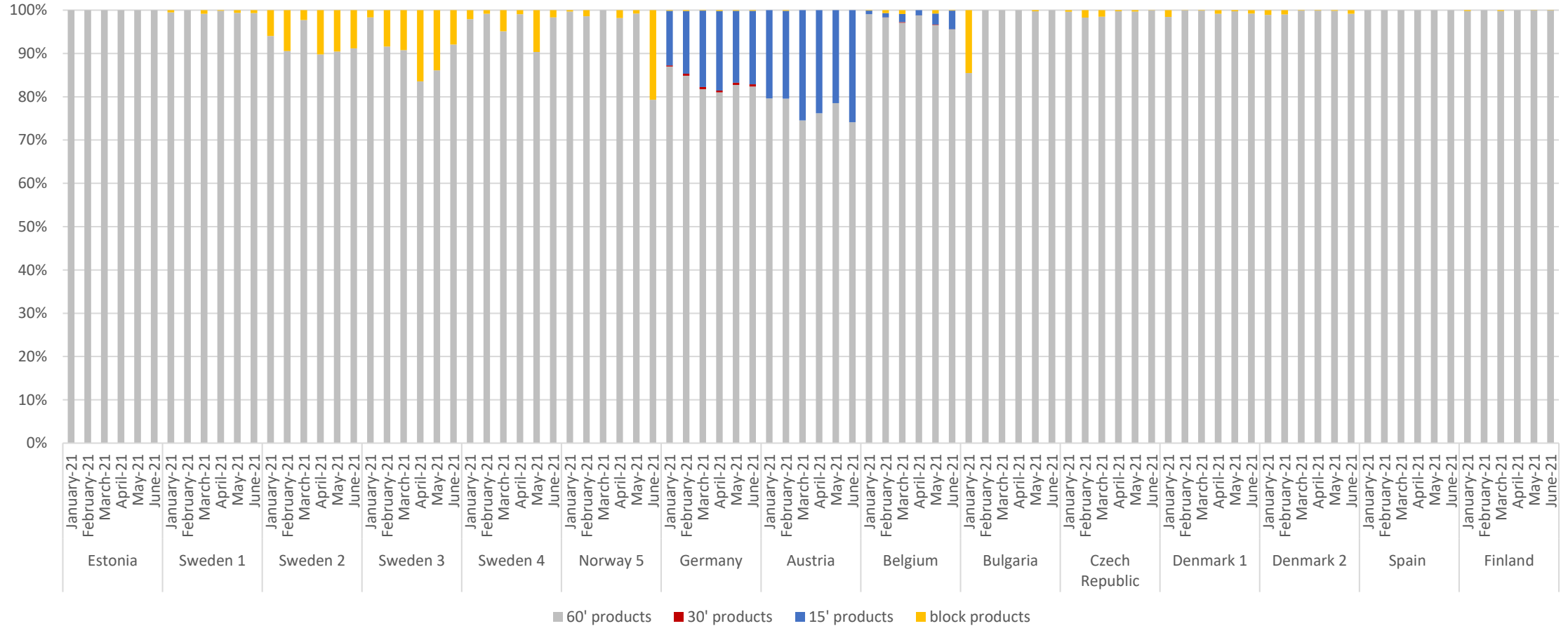
Total volume matched within hours before delivery



Please avoid misinterpretation of the line(s) between "1" and "0" being aware that the volume matched between 1 hour to 30 minutes is substantially lower (in thousands of MWhs) and there is no volume matched between 30 minutes to 0.

## 5. Volume fractions of products per BZ per month (1/4)

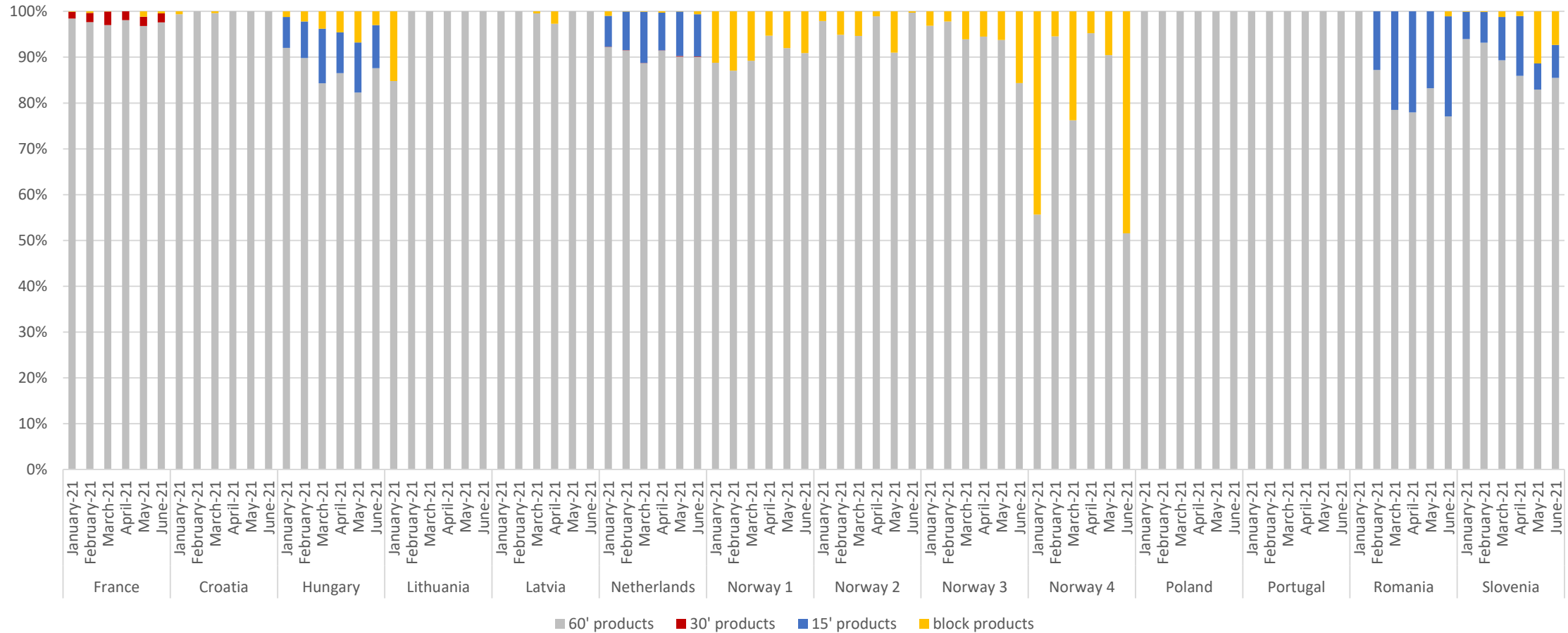
Volume fractions of products per BZ per Month (Sell side)





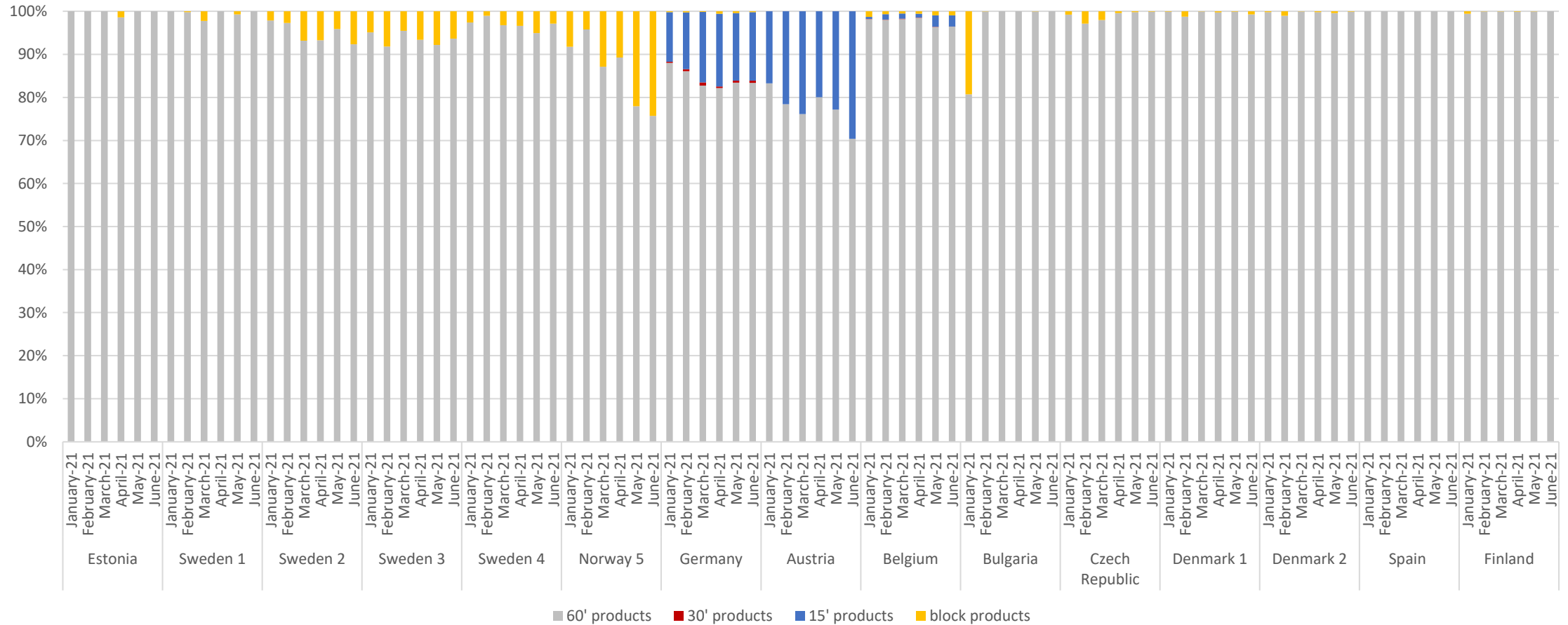
## 5. Volume fractions of products per BZ per month (2/4)

Volume fractions of products per BZ per Month (Sell side)



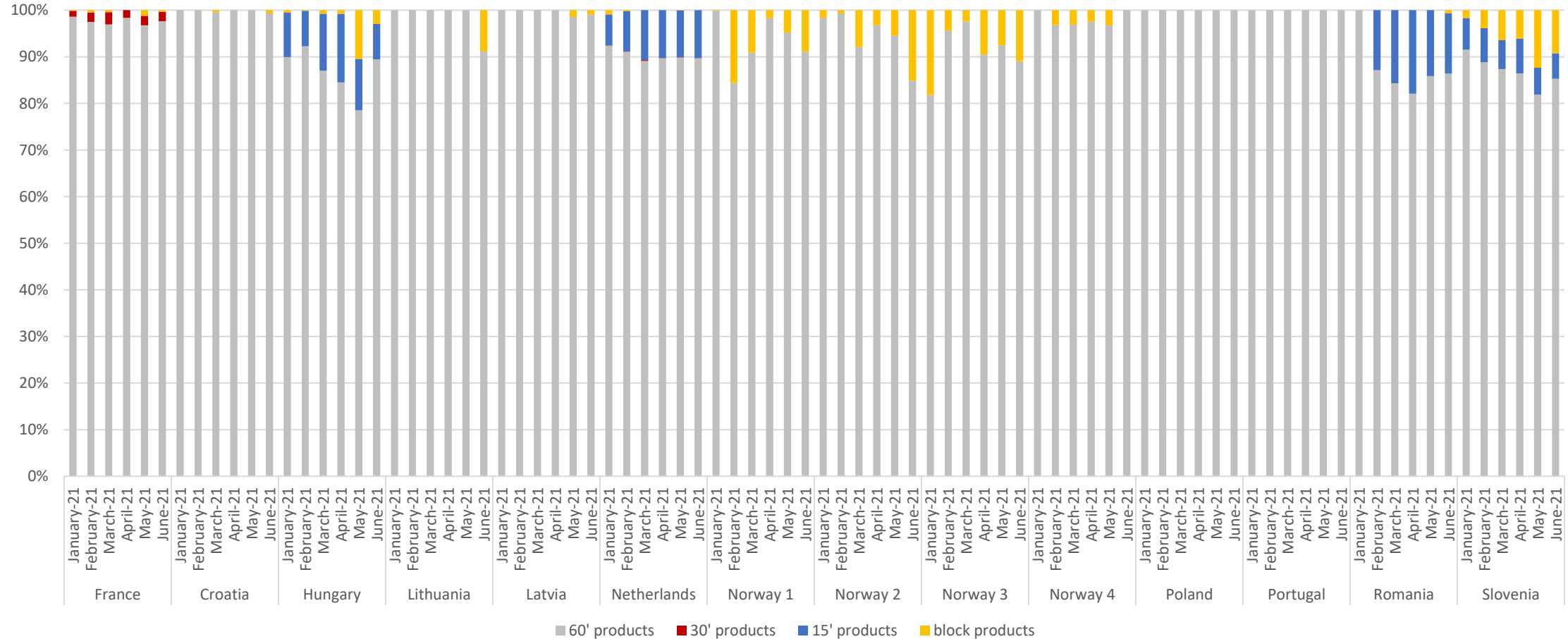
## 5. Volume fractions of products per BZ per month (3/4)

Volume fractions of products per BZ per Month (Buy side)



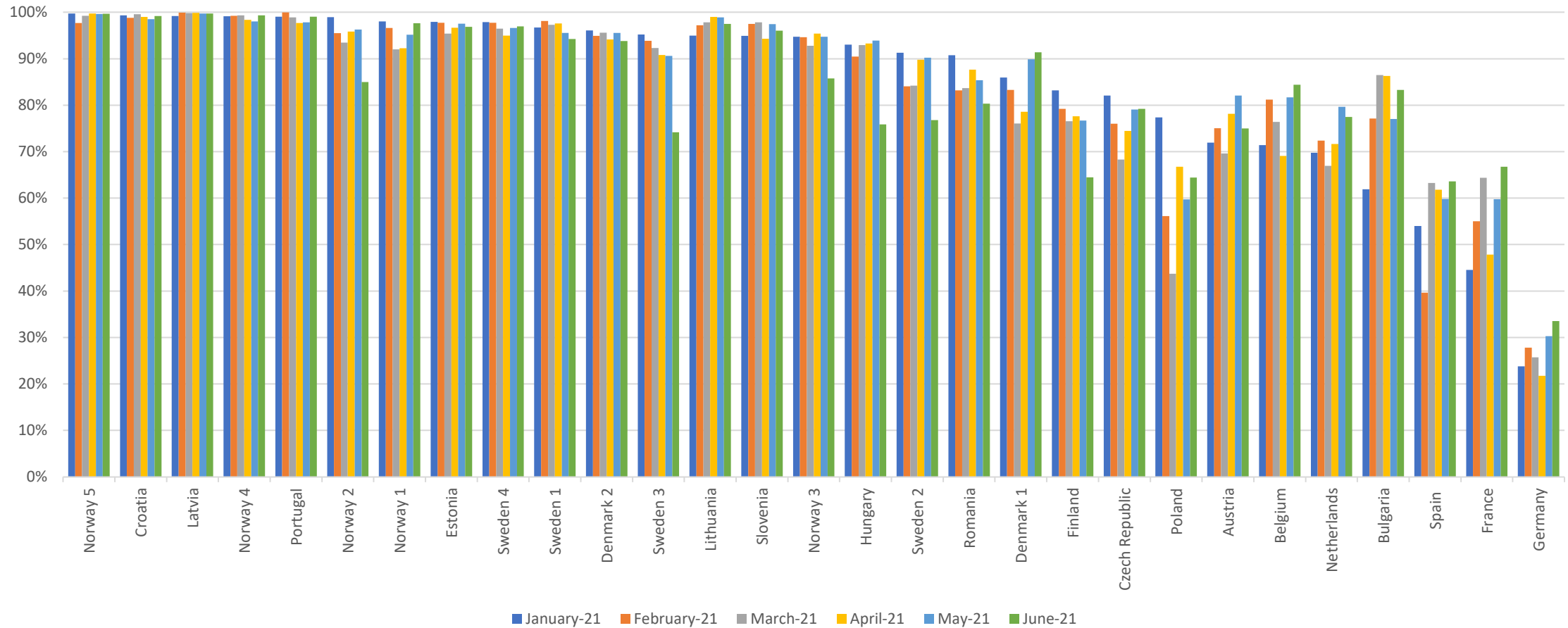
## 5. Volume fractions of products per BZ per month (4/4)

Volume fractions of products per BZ per Month (Buy side)



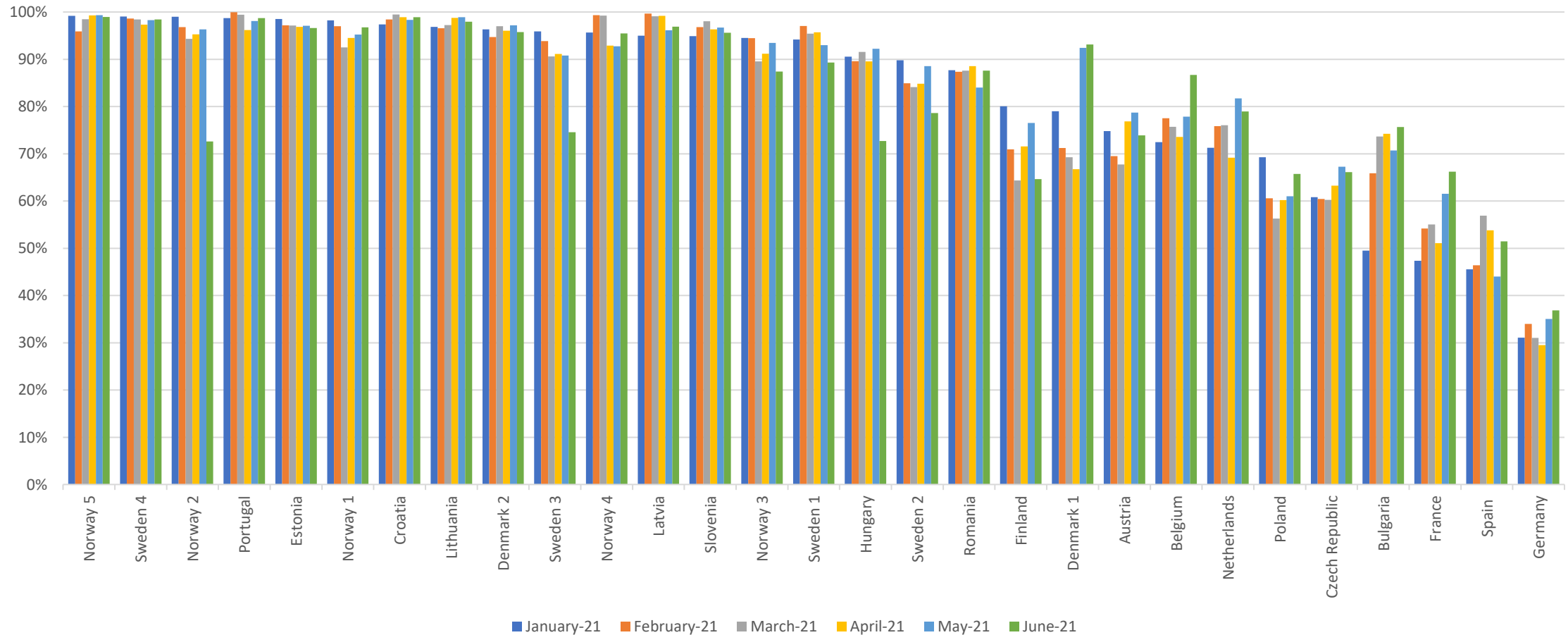
## 6. Share of cross-bidding zone trades vs. overall BZ volume (1/2)

Share of cross-bidding zone trades vs. overall BZ volume (Sell side)

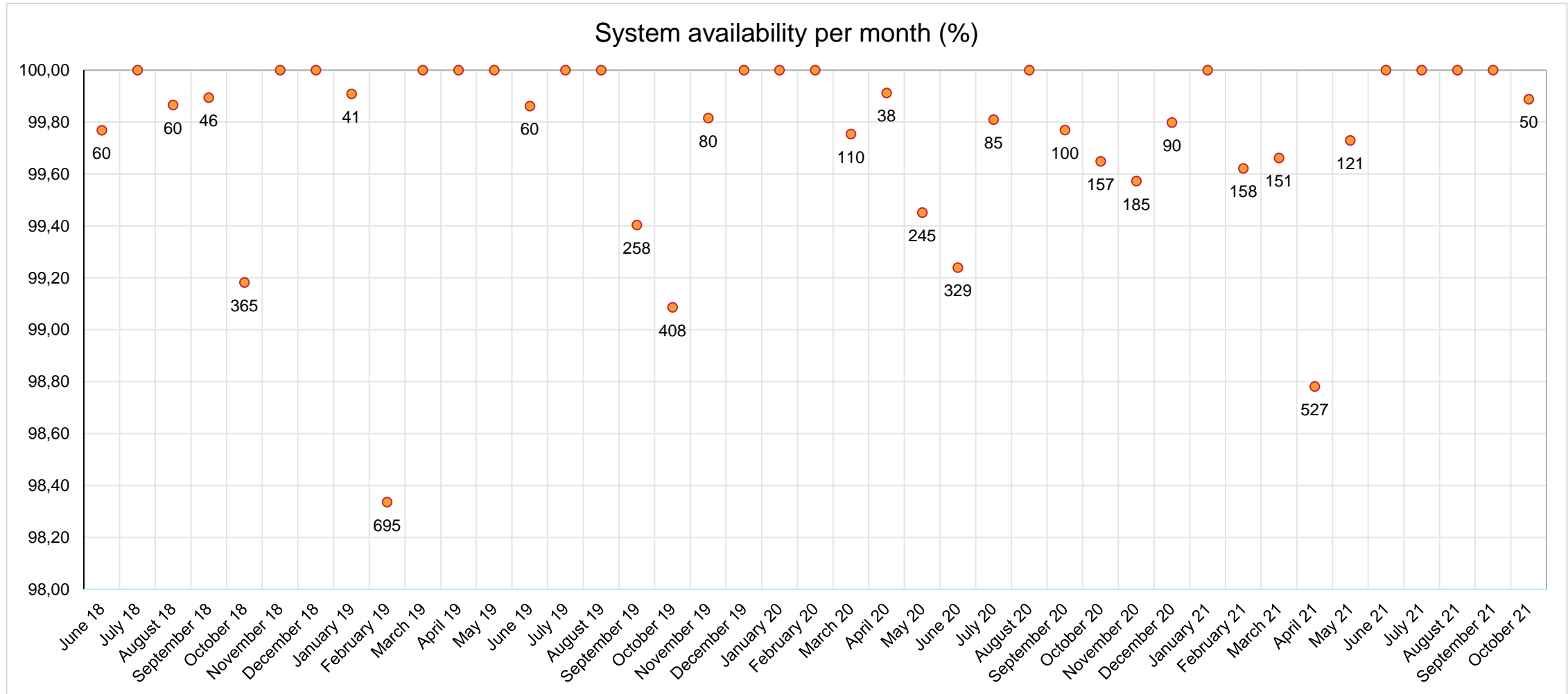


## 6. Share of cross-bidding zone trades vs. overall BZ volume (2/2)

Share of cross-bidding zone trades vs. overall BZ volume (Buy side)

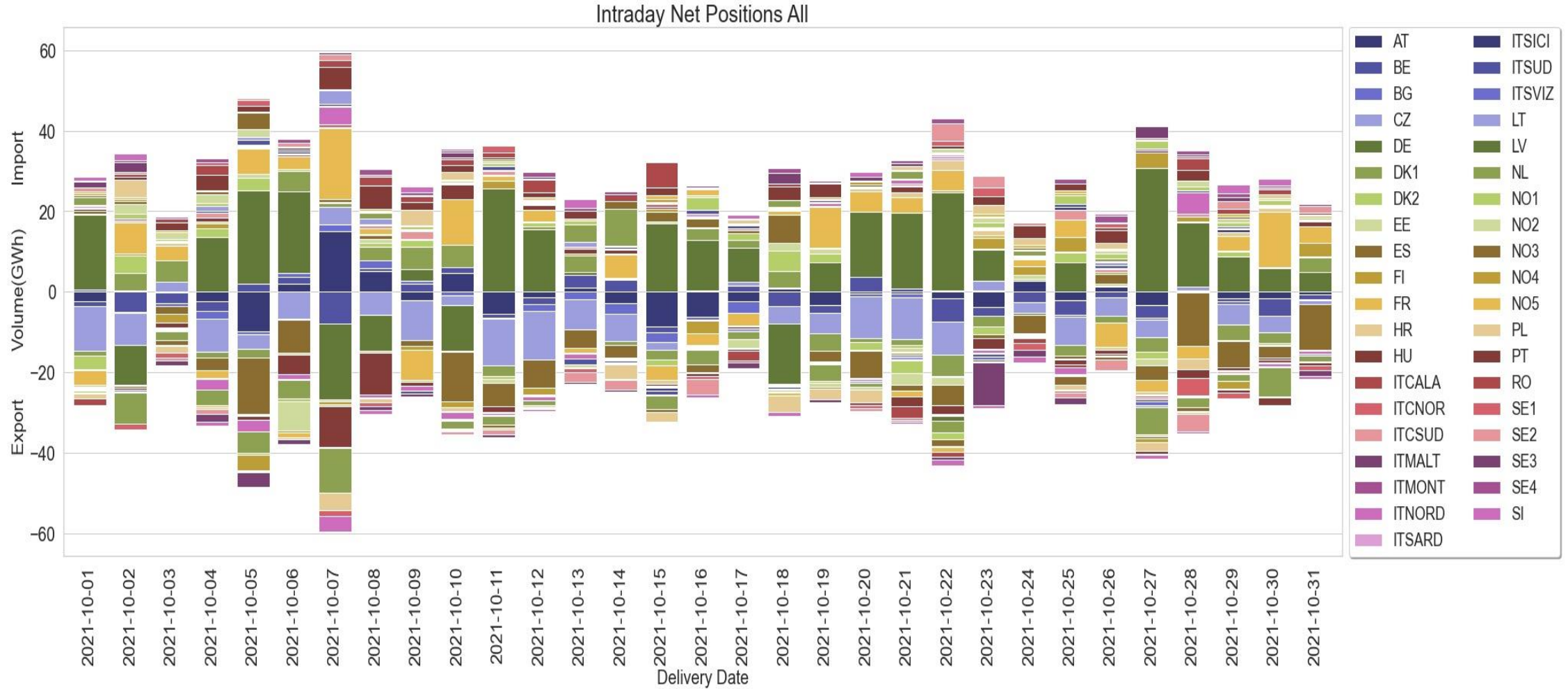


## 7. Total availability of the central SIDC platform

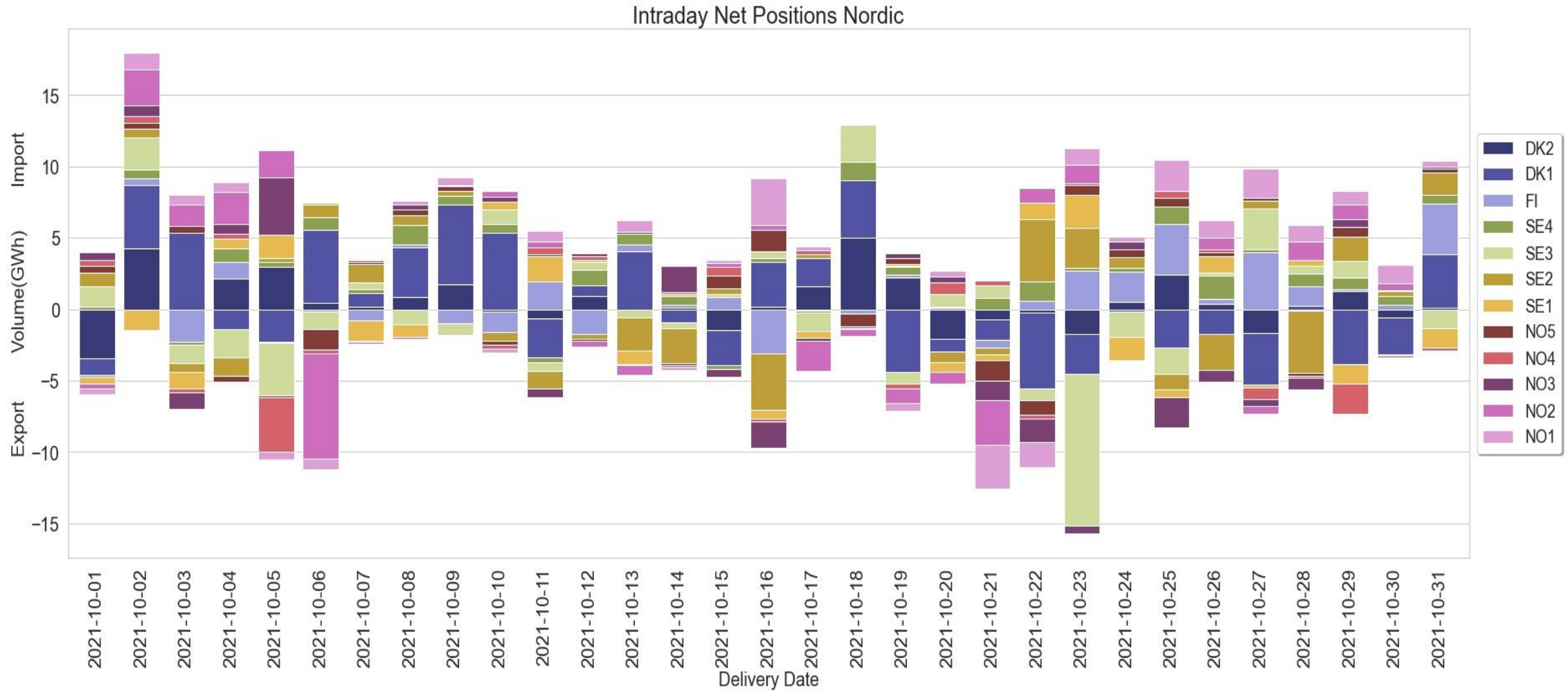


\*minutes of downtime included to markers for months where applicable

## 8. Net positions (1/11)

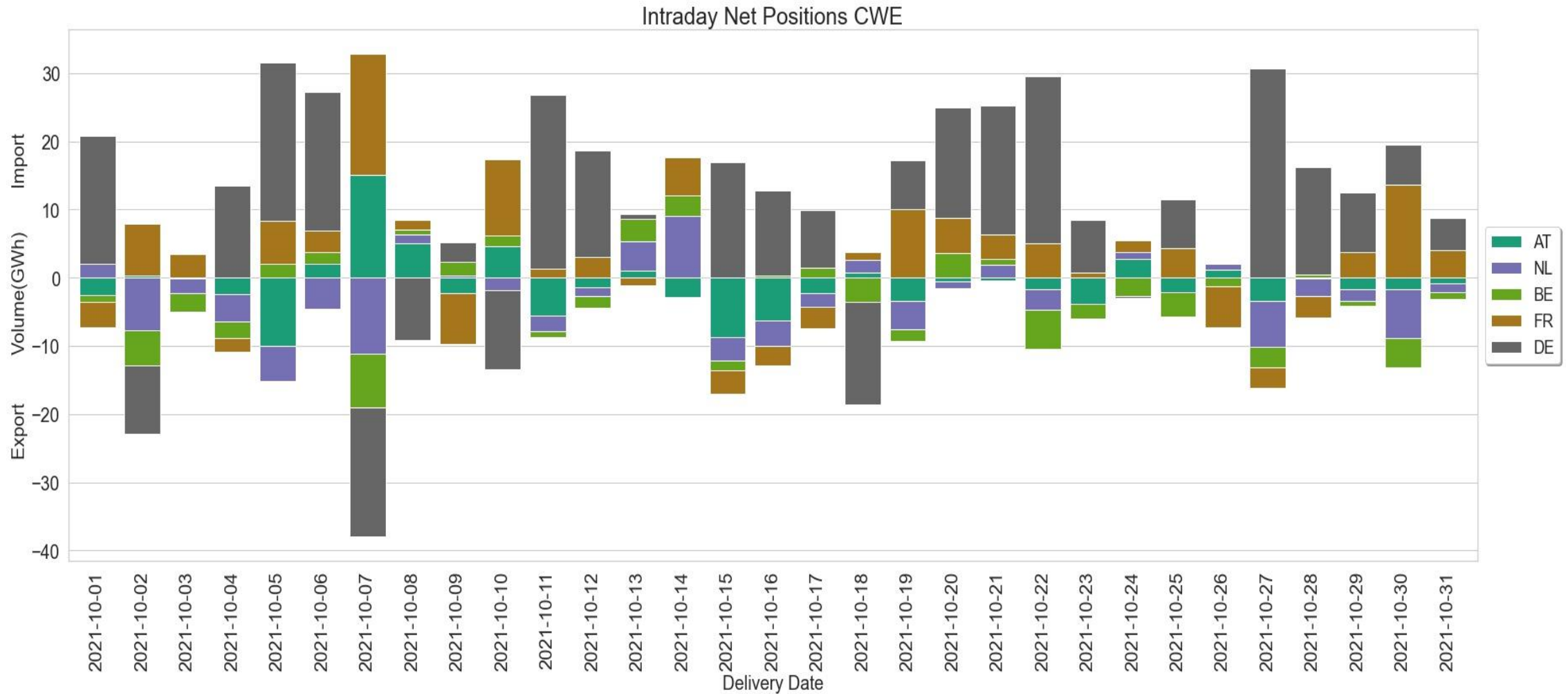


## 8. Net positions (2/11)

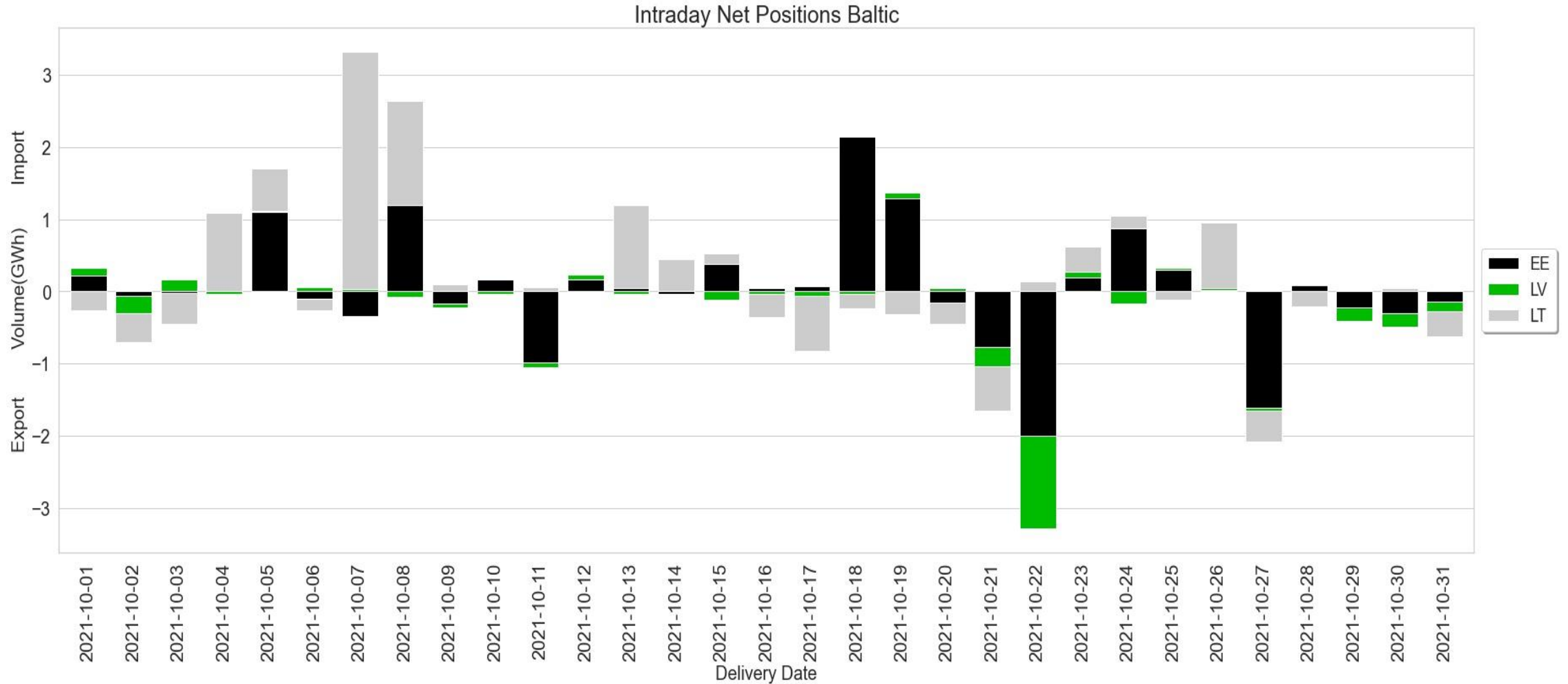




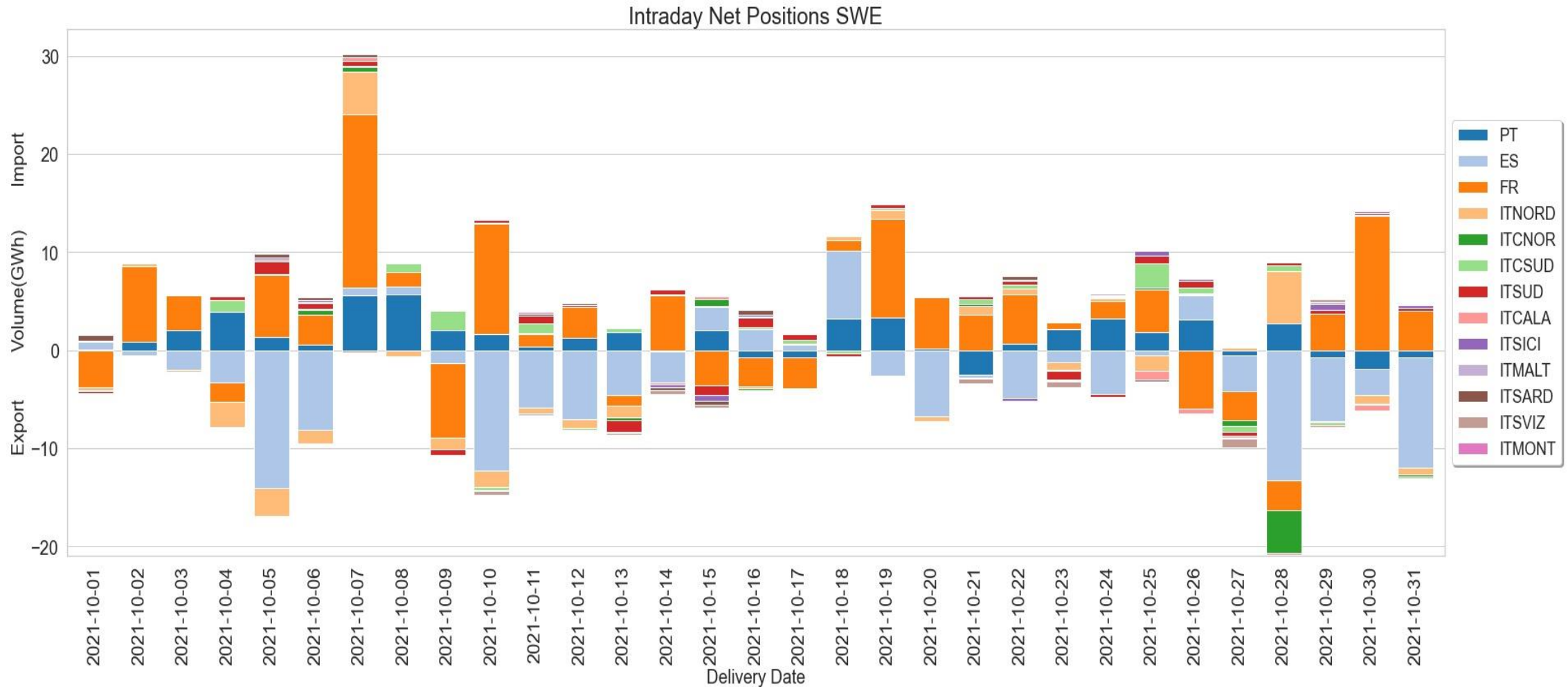
## 8. Net positions (3/11)



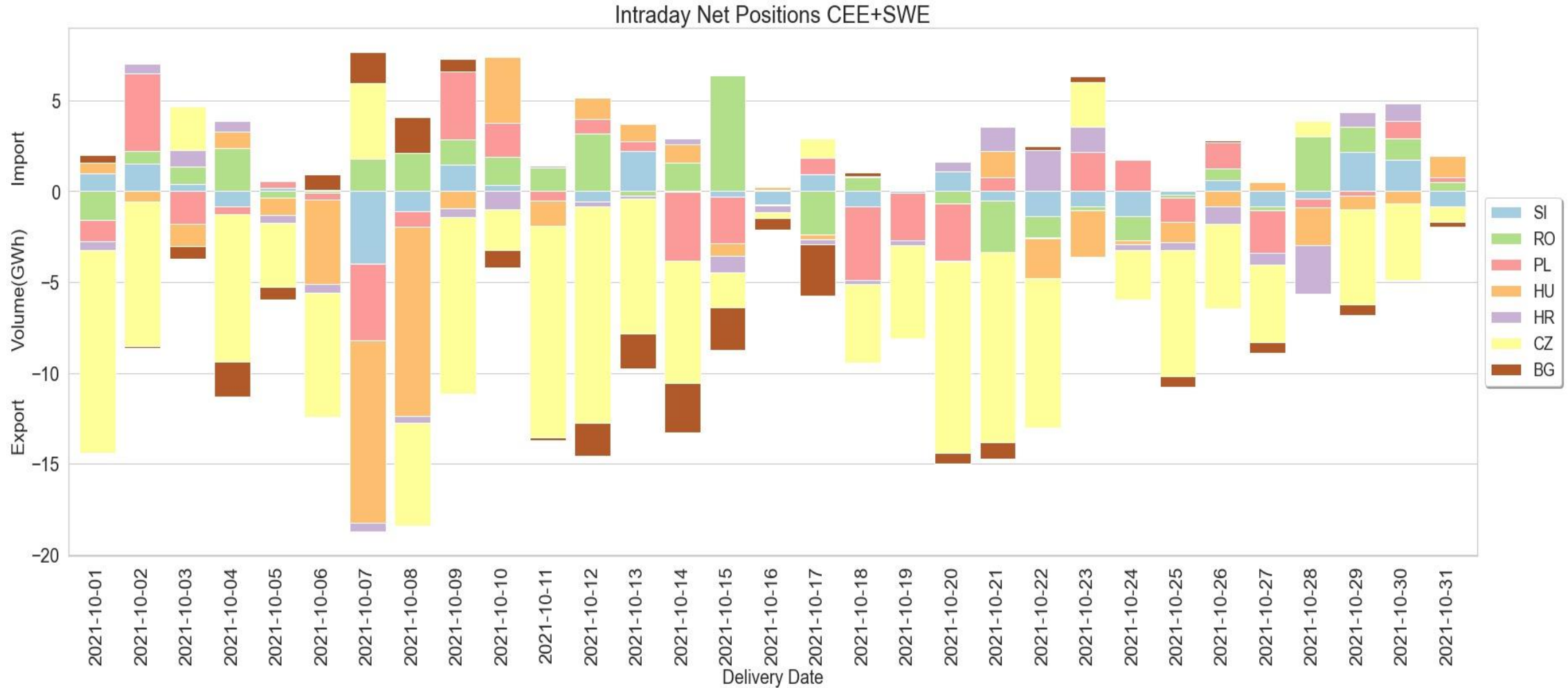
## 8. Net positions (4/11)



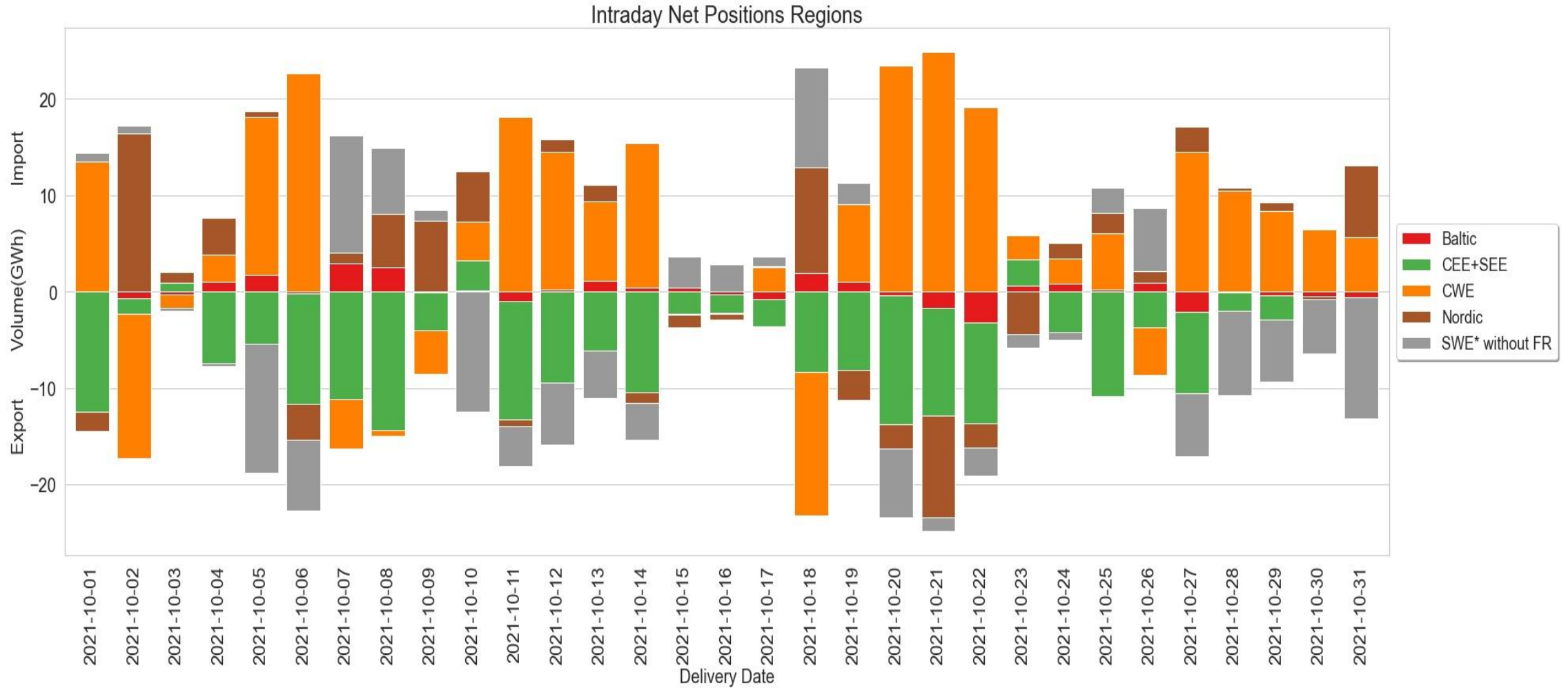
## 8. Net positions (5/11)



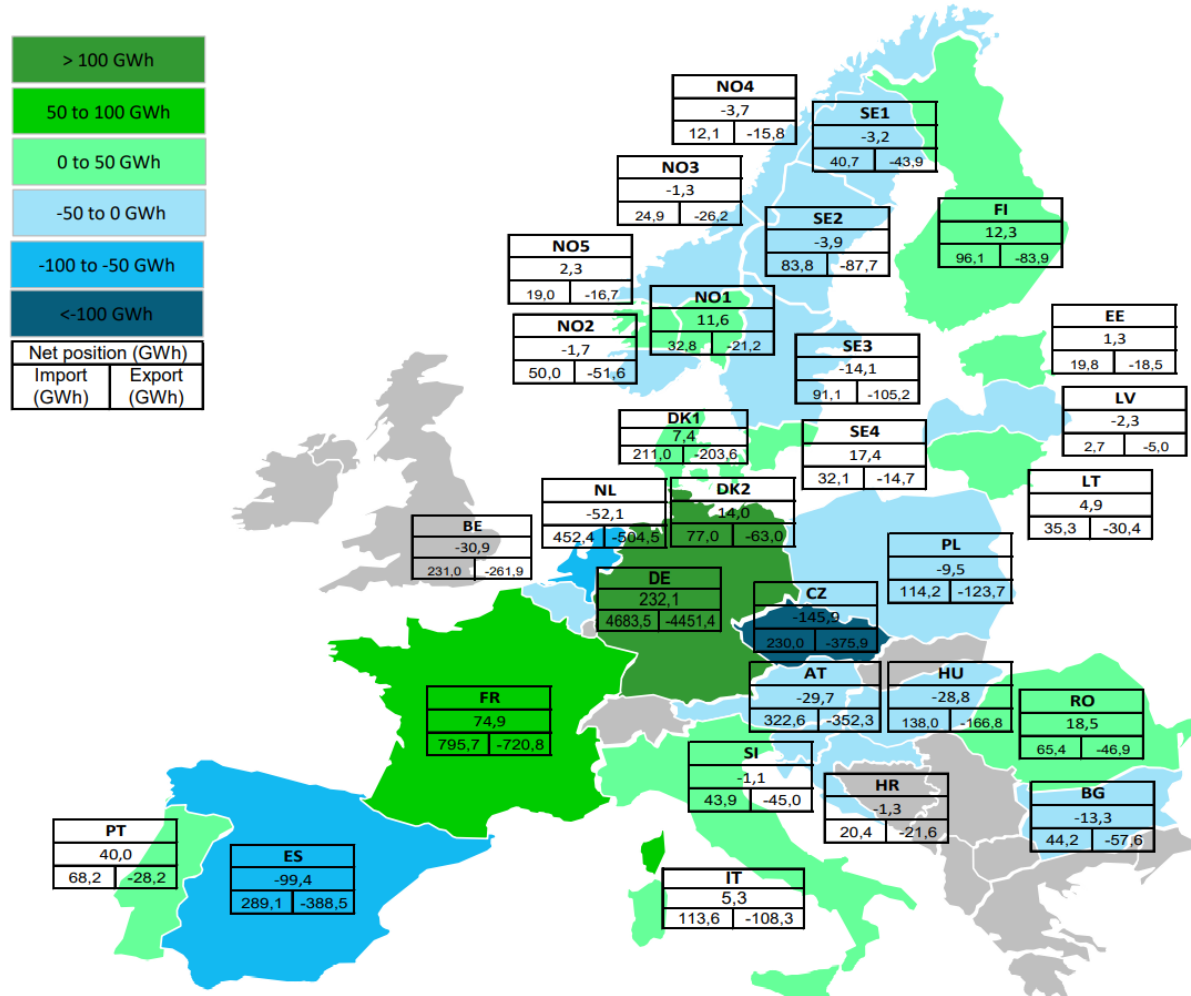
## 8. Net positions (6/11)



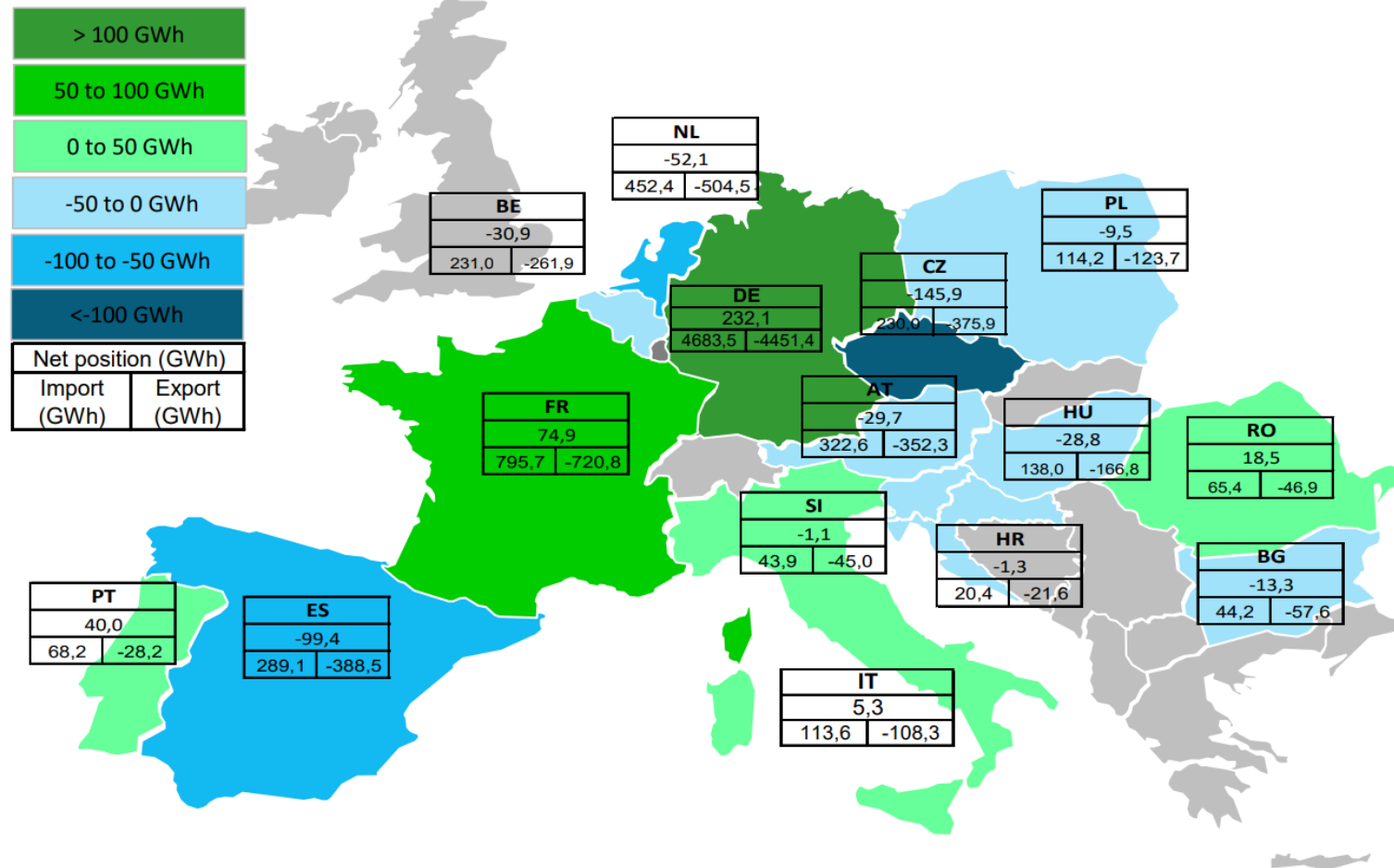
## 8. Net positions (7/11)



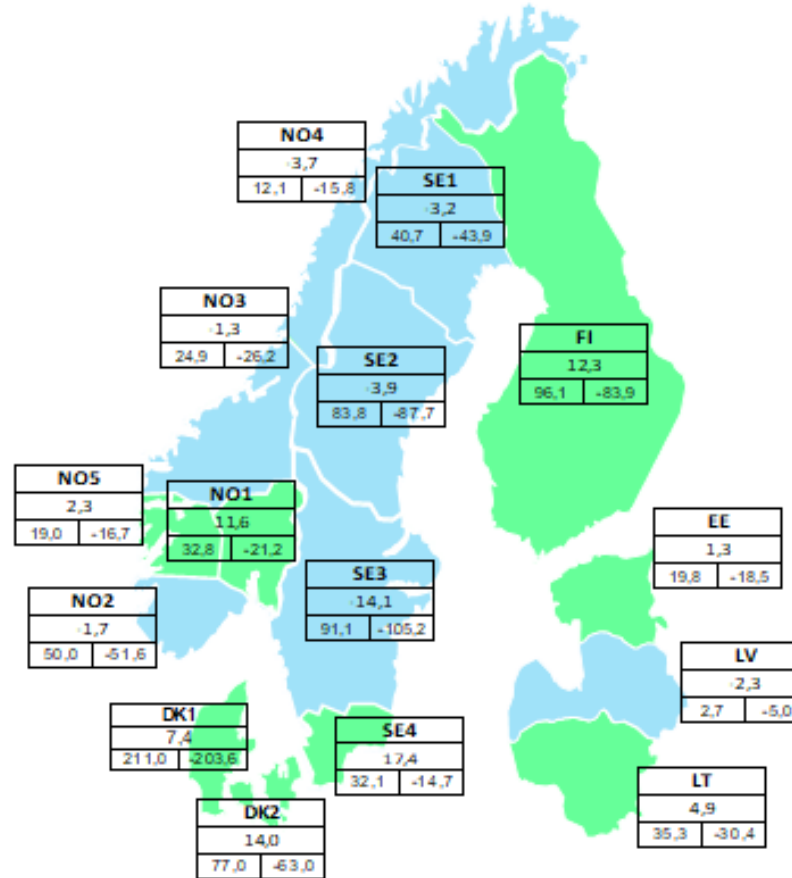
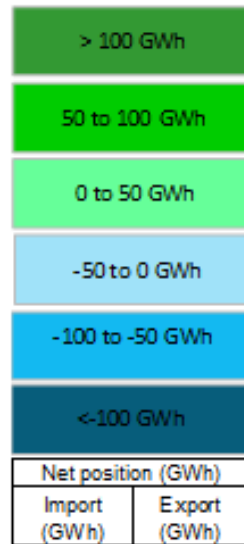
## 8. Net positions (8/11)



## 8. Net positions (9/11)

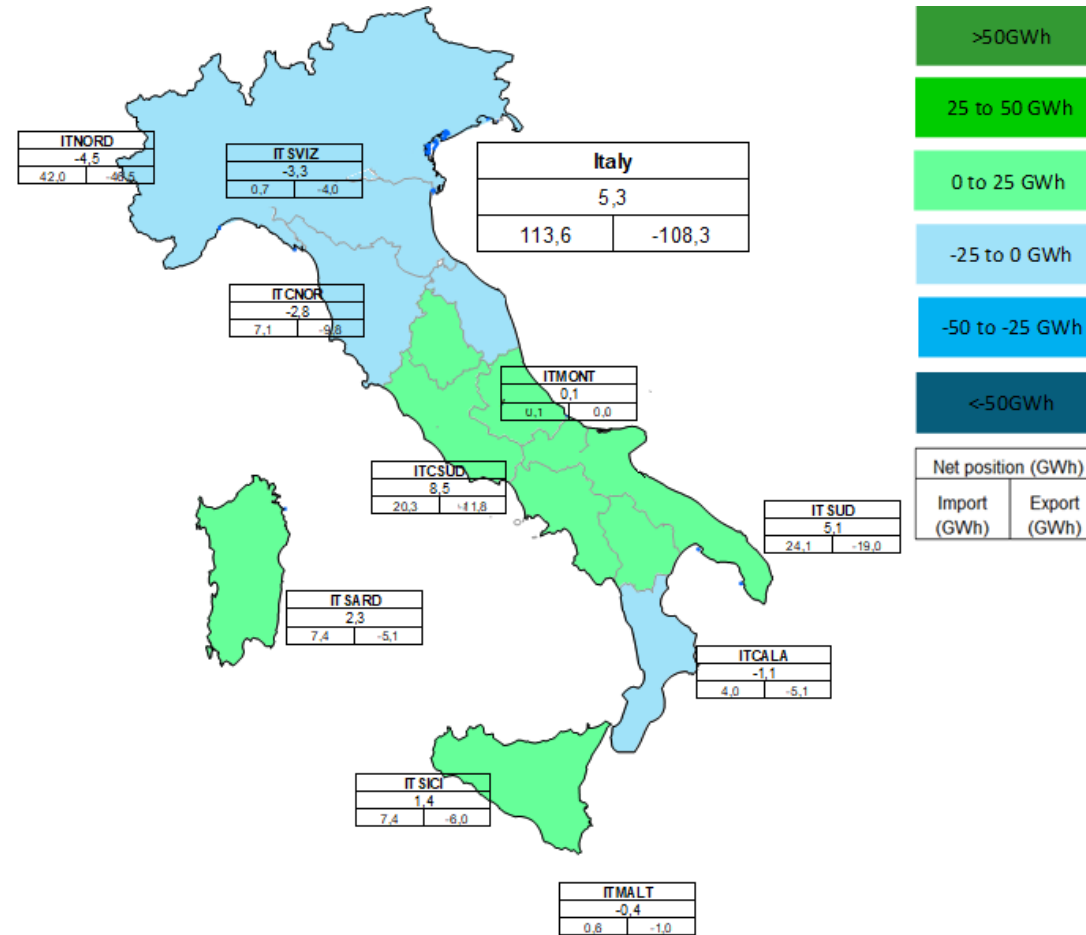


## 8. Net positions (10/11)

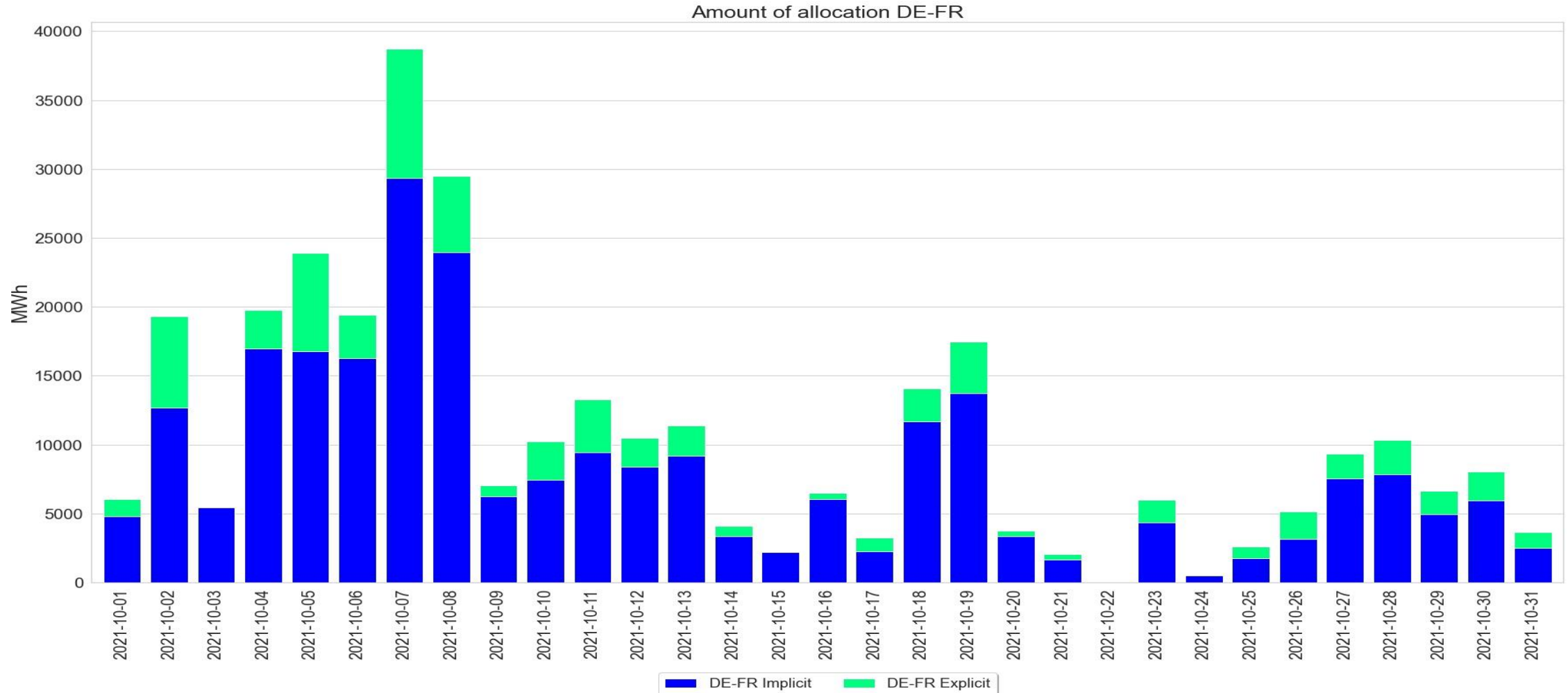




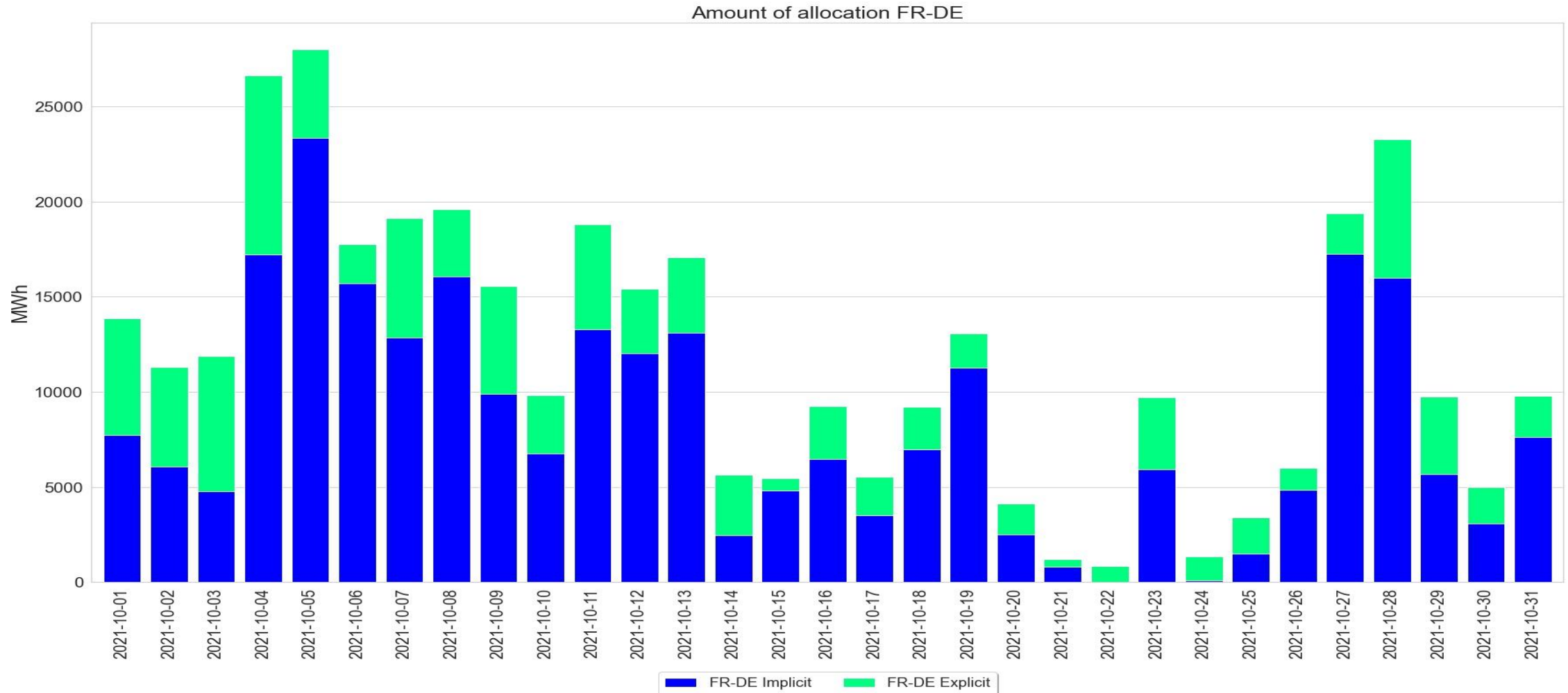
## 8. Net positions (11/11)



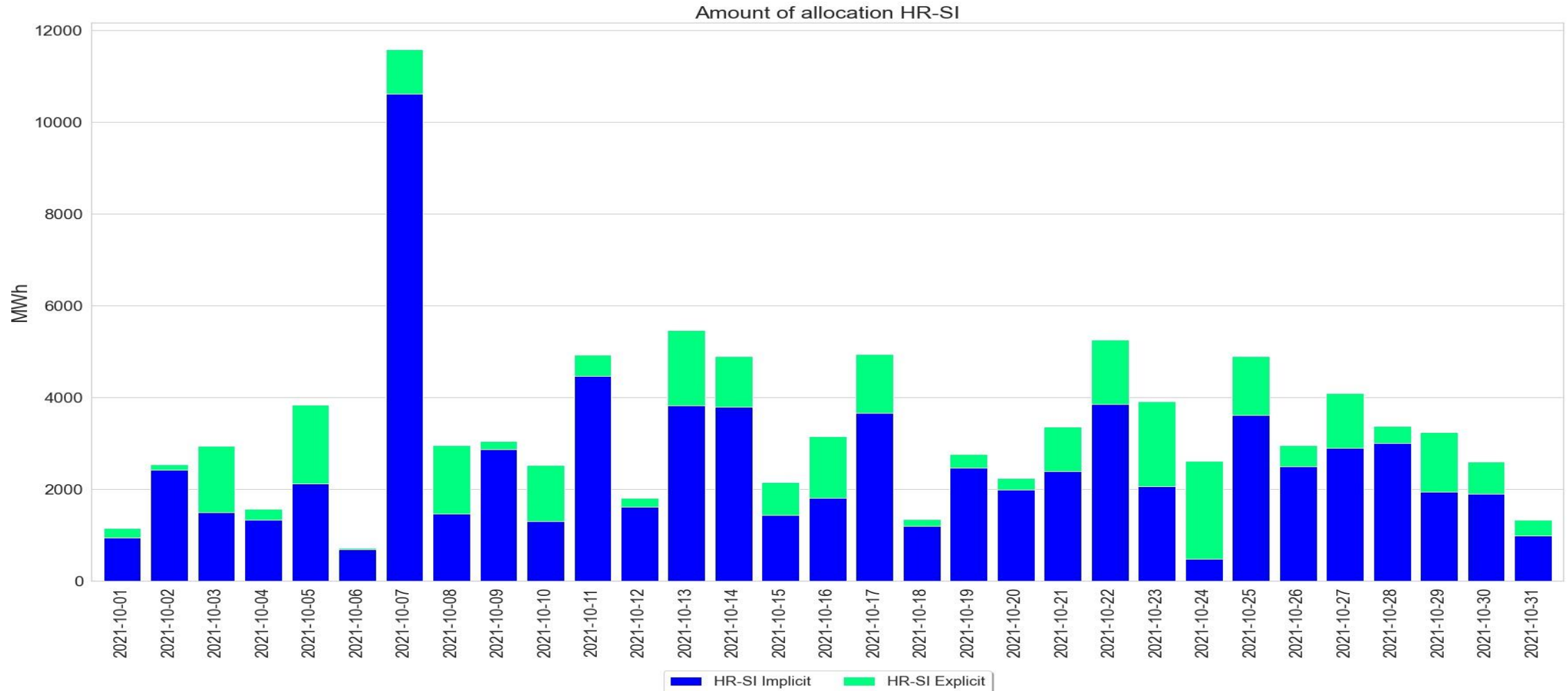
## 9. Total amount of explicit capacity allocation (1/4)



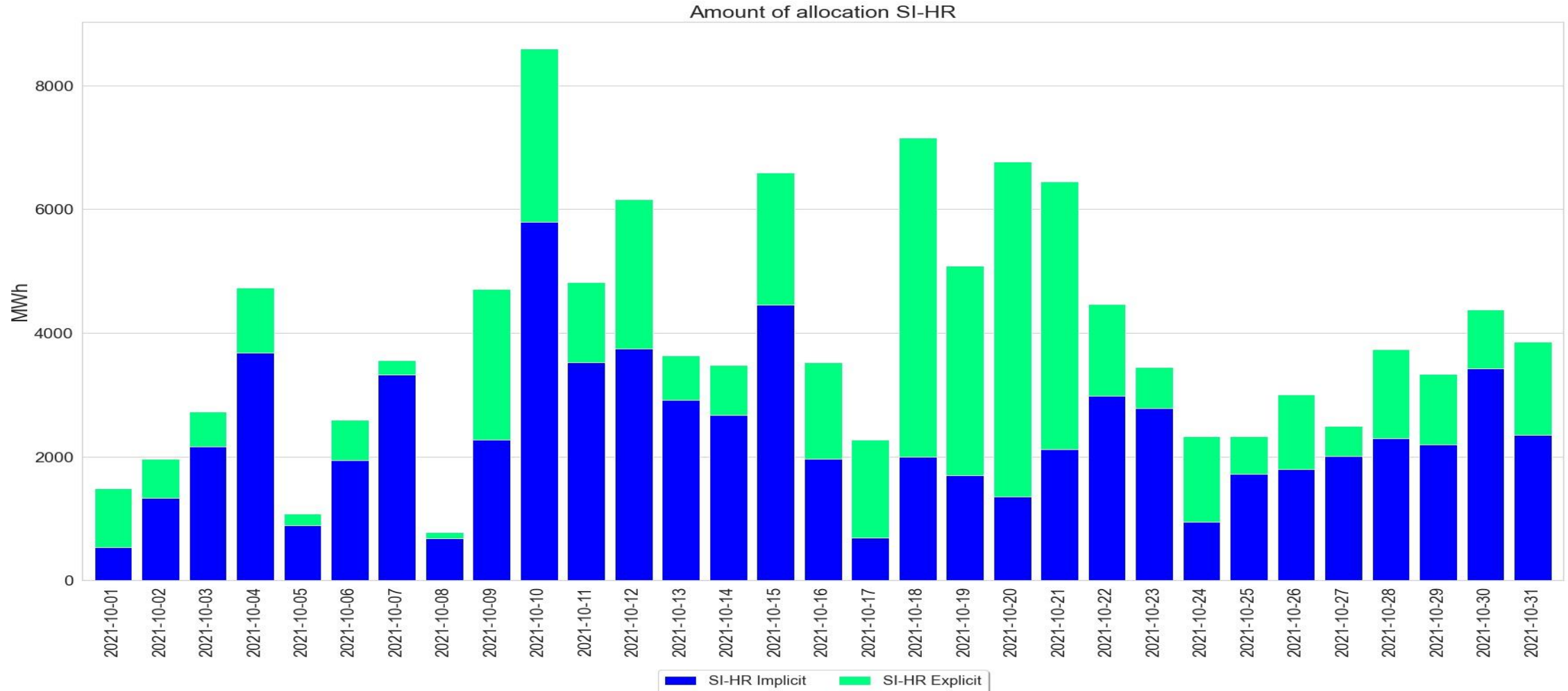
## 9. Total amount of explicit capacity allocation (2/4)



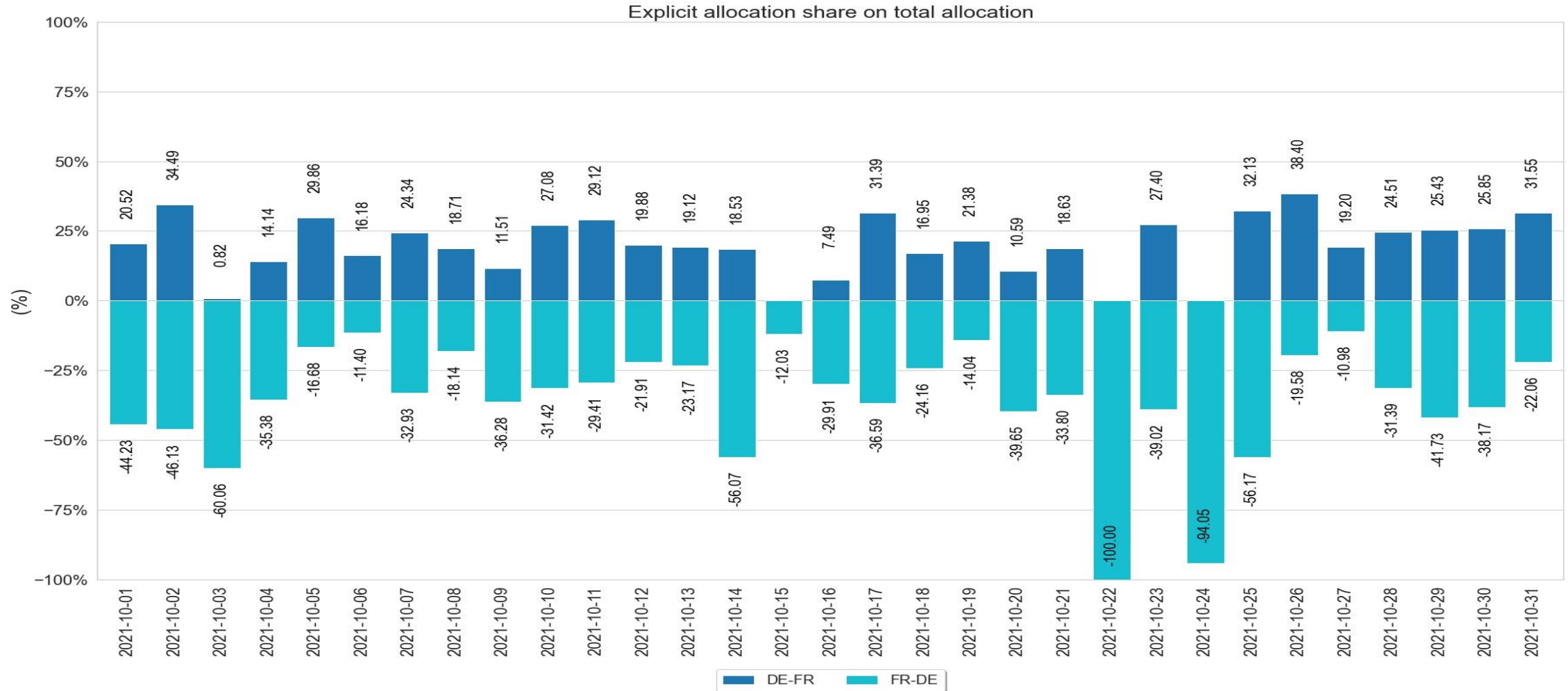
## 9. Total amount of explicit capacity allocation (3/4)



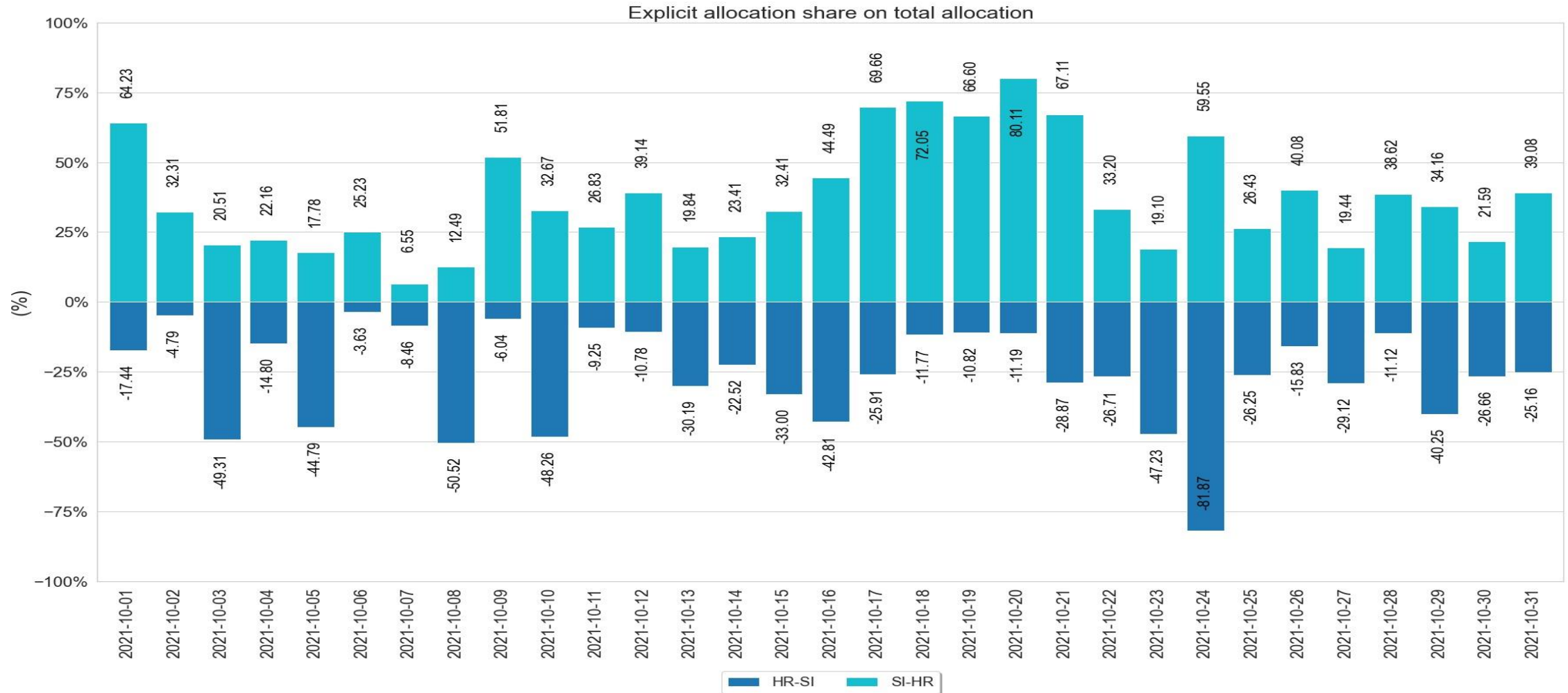
## 9. Total amount of explicit capacity allocation (4/4)



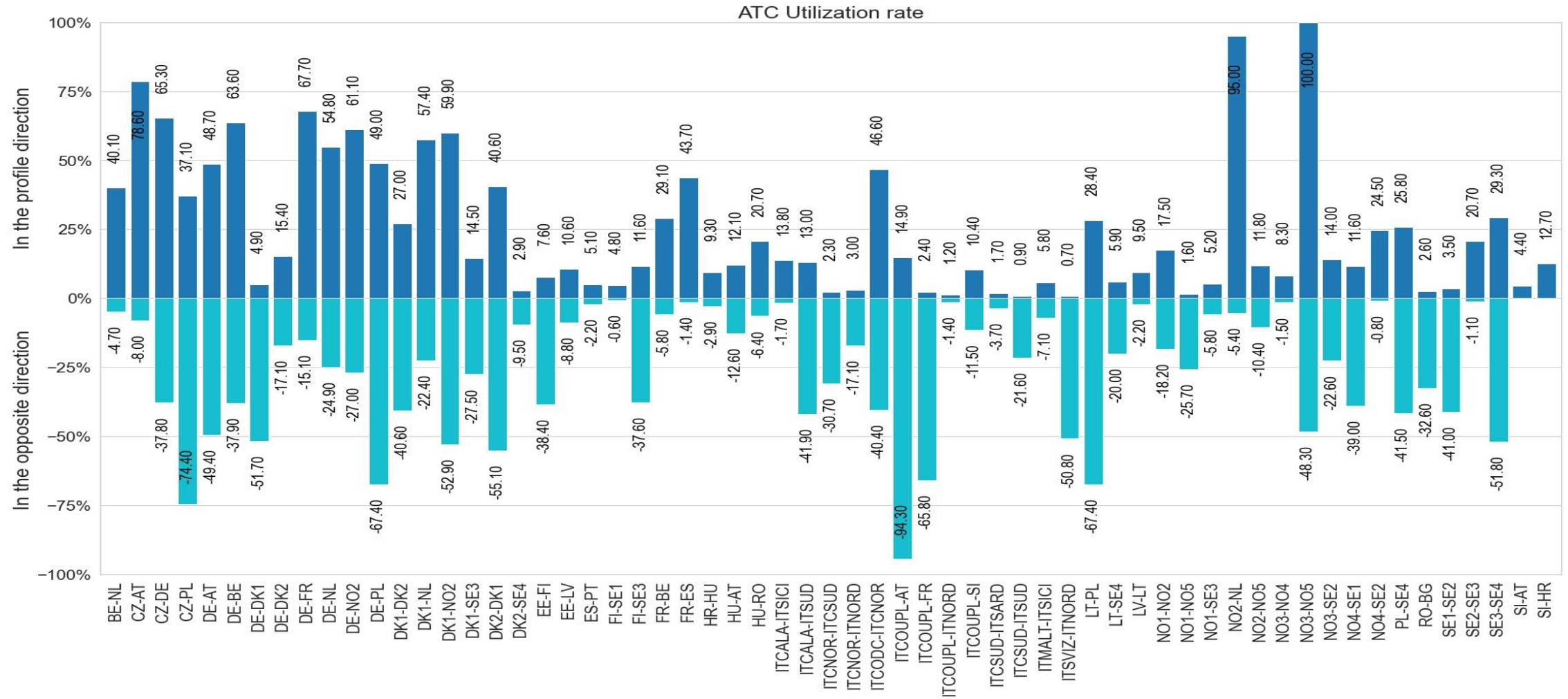
## 10. Explicit allocation share on total allocation (1/2)



## 10. Explicit allocation share on total allocation (2/2)



## 11. ATC utilization rate





## 12. Evolution of order events and trades

